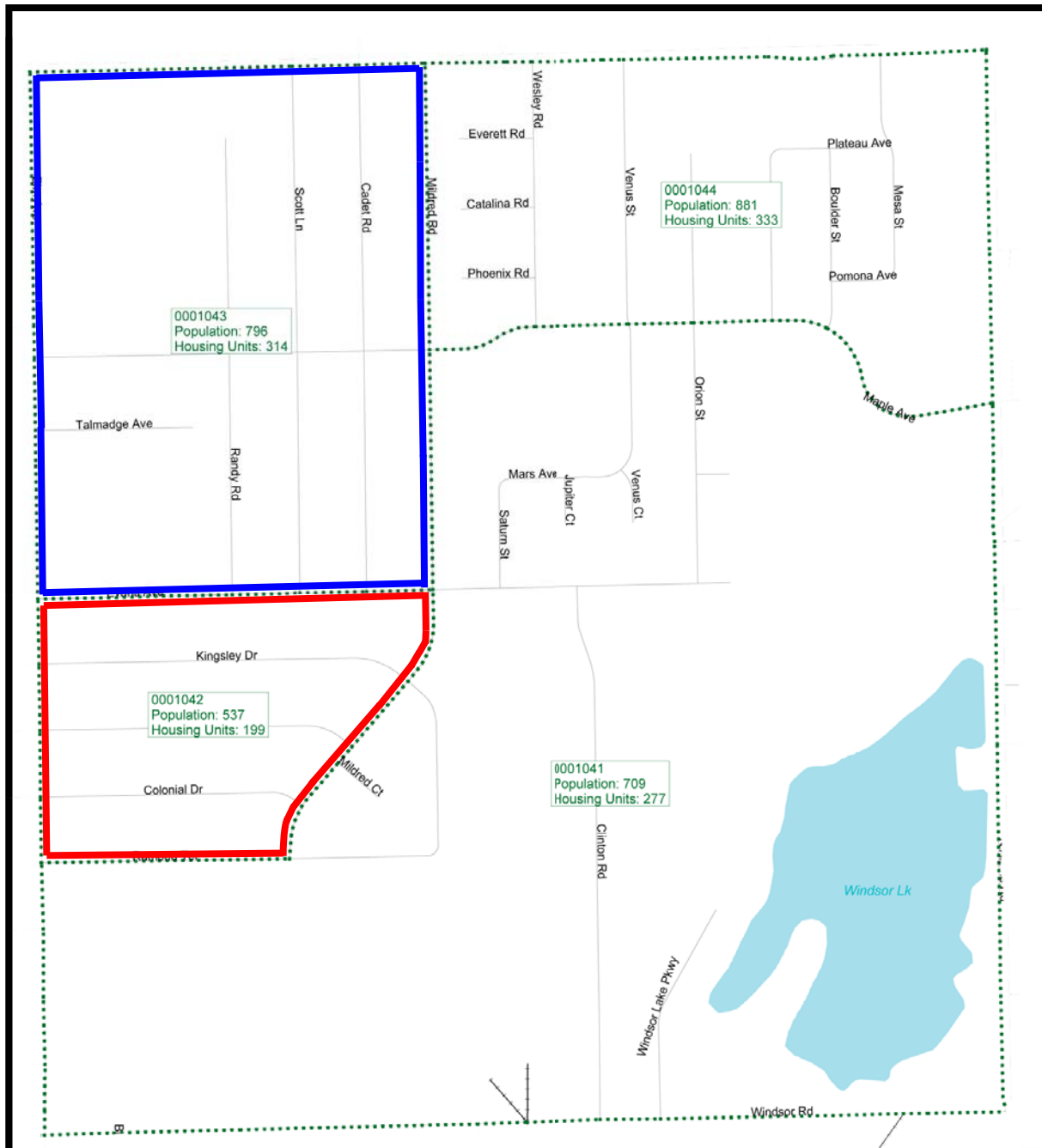


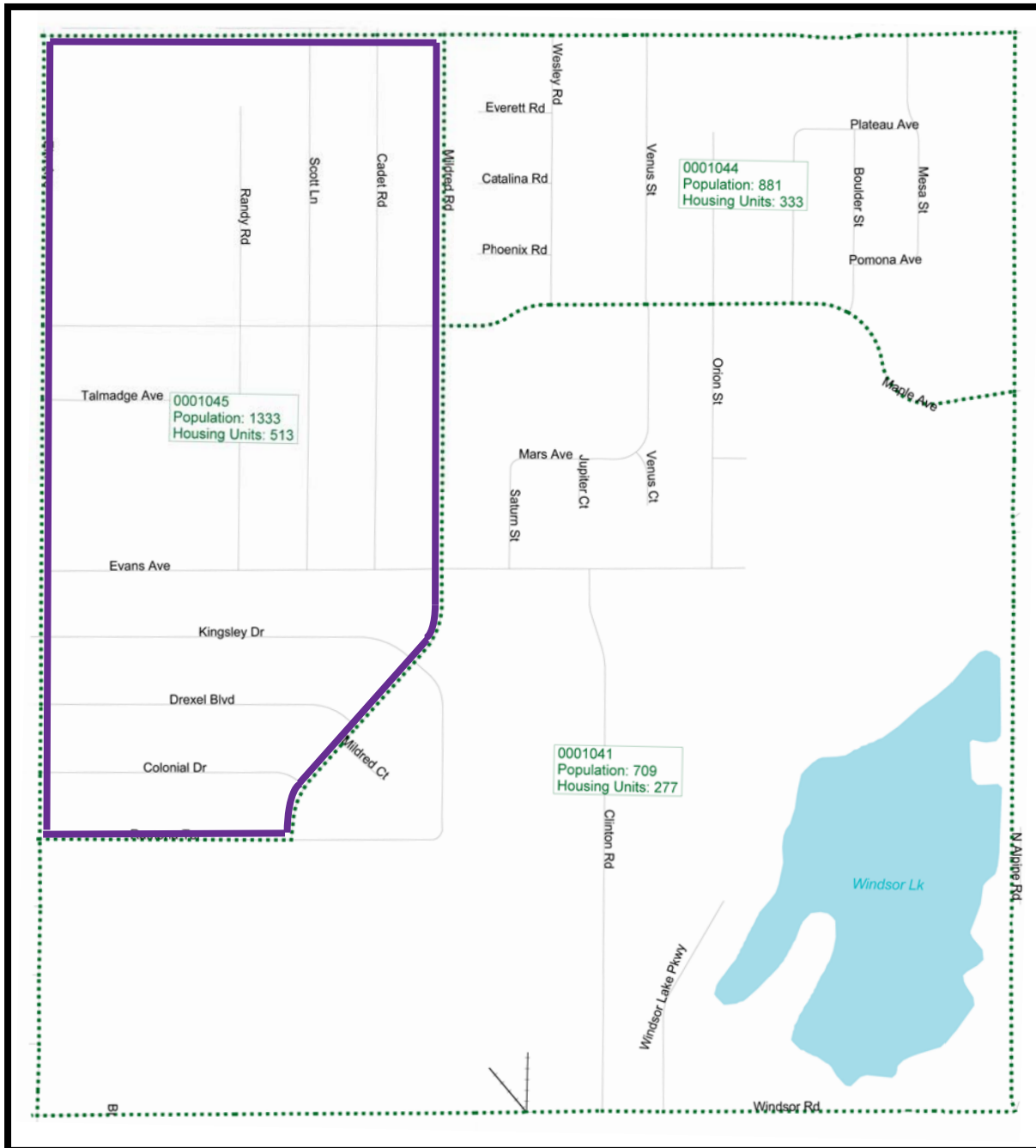
# CT 000104 Block Groups- Before



## LEGEND

- ..... BG Boundary
- BG 0001042
- BG 0001043
- Street
- Railroad

# CT 000104 Block Groups- After



## **LEGEND**

- ..... BG Boundary
- BG 0001045
- Street
- Railroad

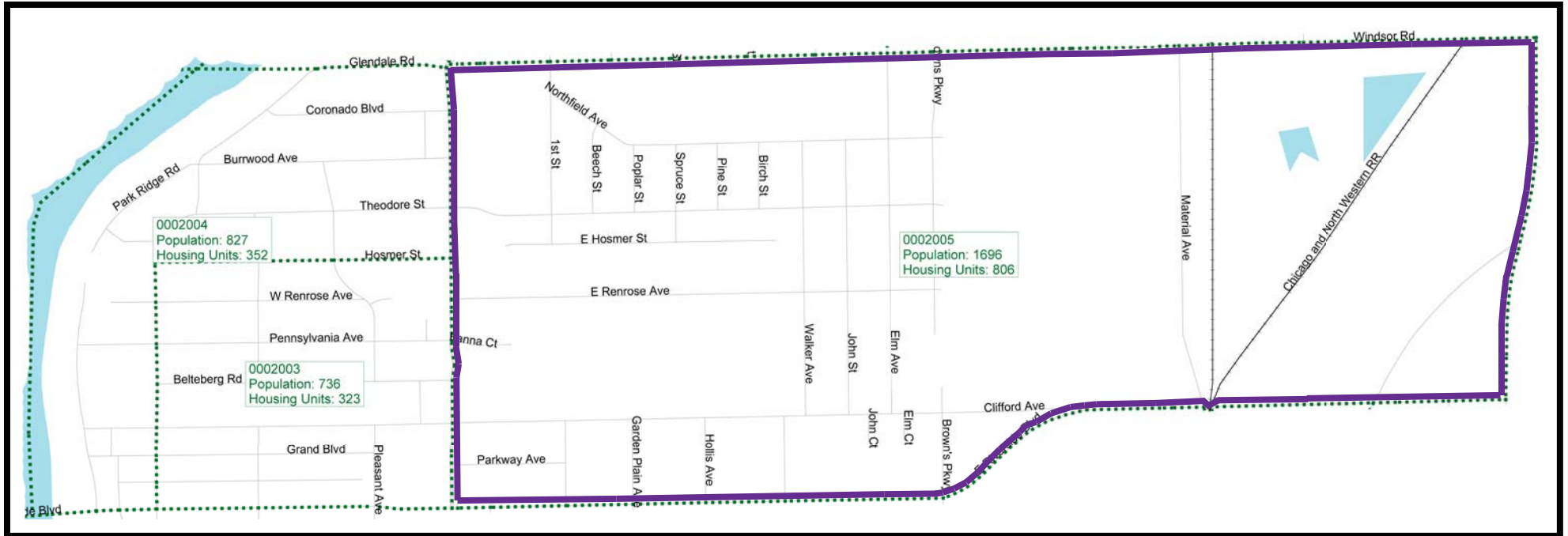
# CT 000200 Block Groups- Before



## LEGEND

- ..... BG Boundary
- BG 0002001
- BG 0002002
- Street
- Railroad

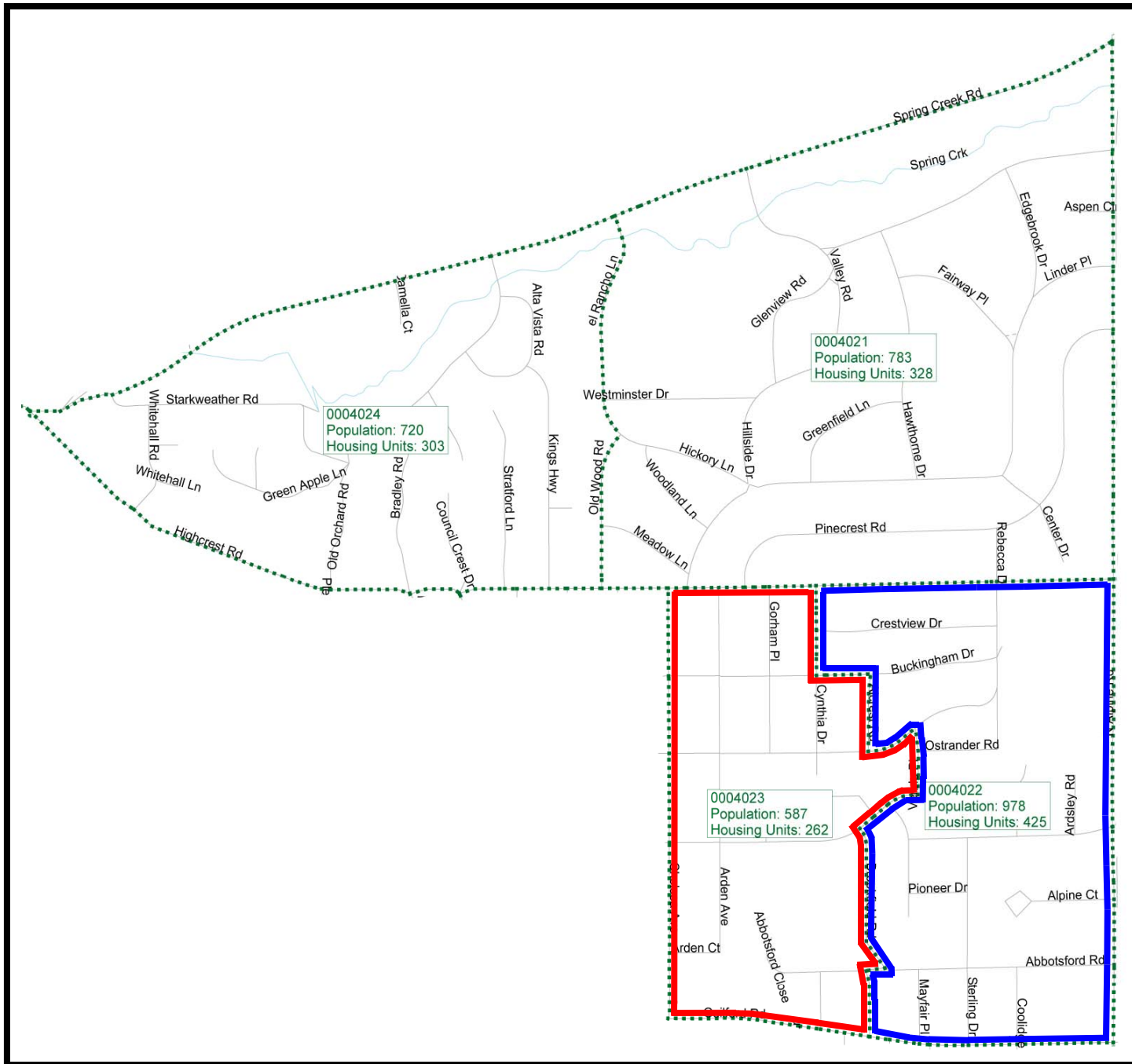
# CT 000200 Block Groups- After



## LEGEND

- ..... BG Boundary
- BG 0002005
- Street
- +—— Railroad

# CT 000402 Block Groups- Before



## **LEGEND**

- ..... BG Boundary
- BG 0004023
- BG 0004022
- Street
- Railroad

# CT 000402 Block Groups- After



## LEGEND

- BG Boundary
- BG 0004025
- Street
- Railroad

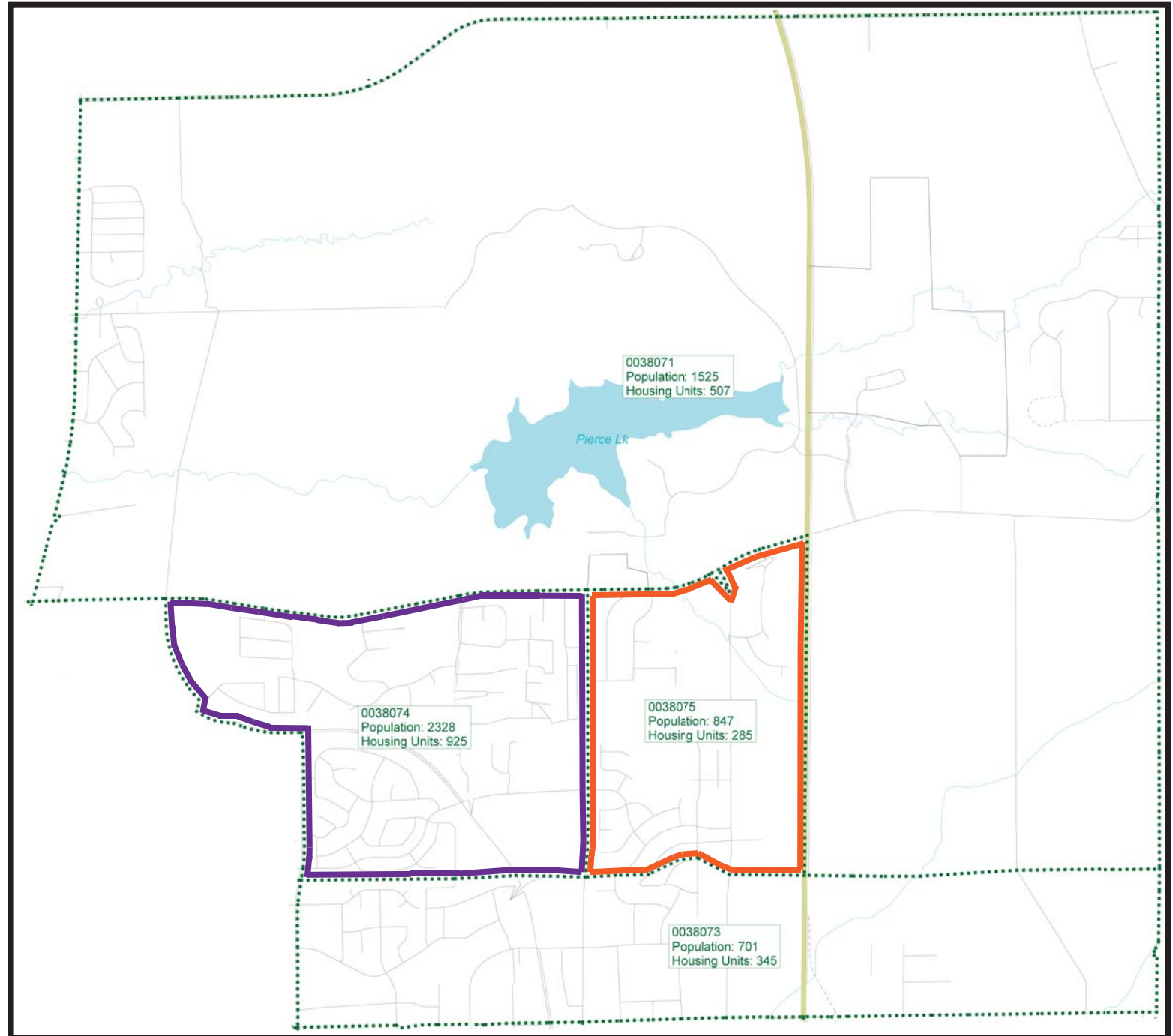
# CT 003807 Block Groups- Before

**LEGEND**

- ..... BG Boundary
- BG 0038072
- Street
- +—— Railroad



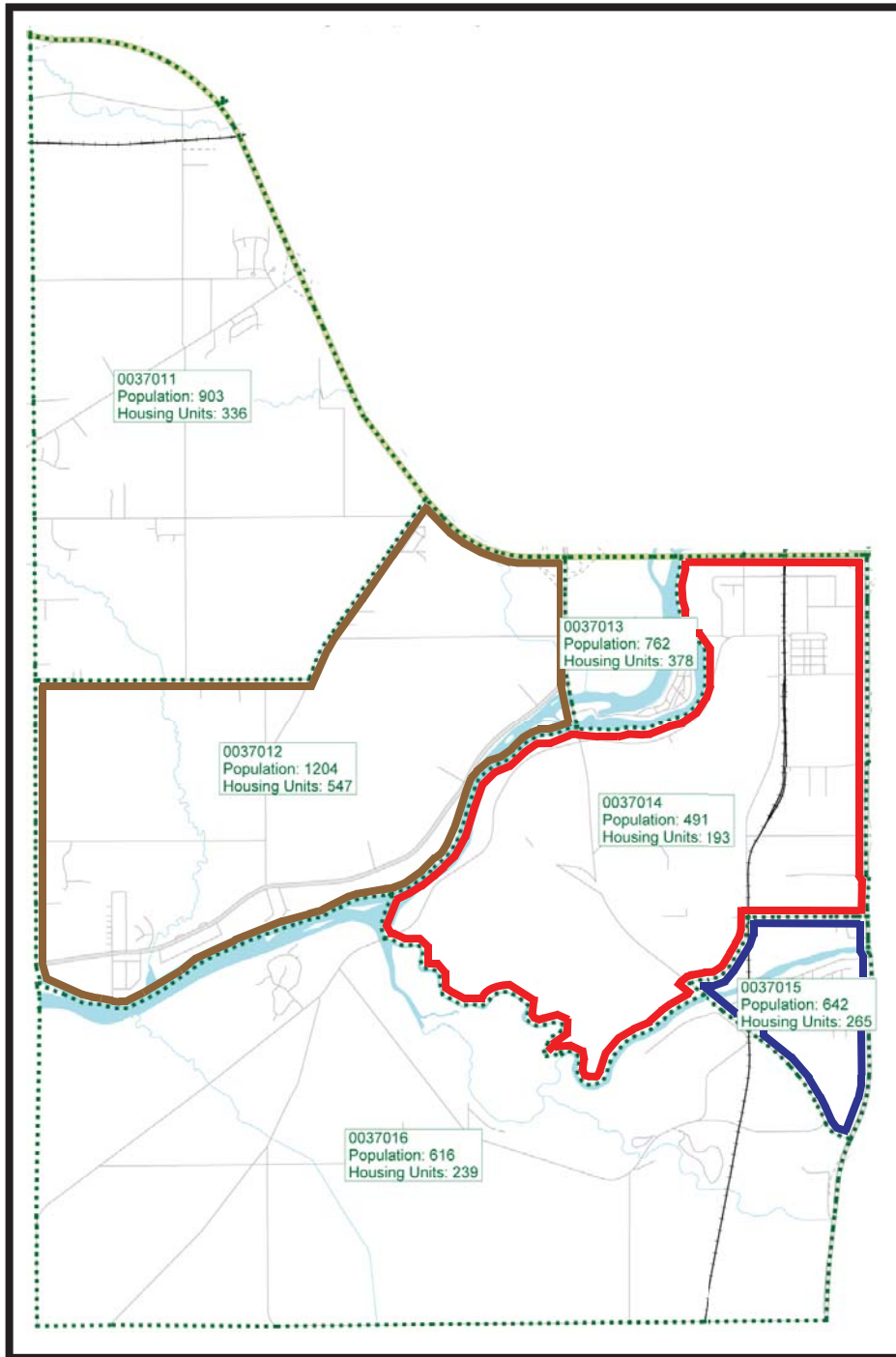
# CT 003807 Block Groups- After



## **LEGEND**

- ..... BG Boundary
- BG 0038074
- BG 0038075
- Street
- +—— Railroad

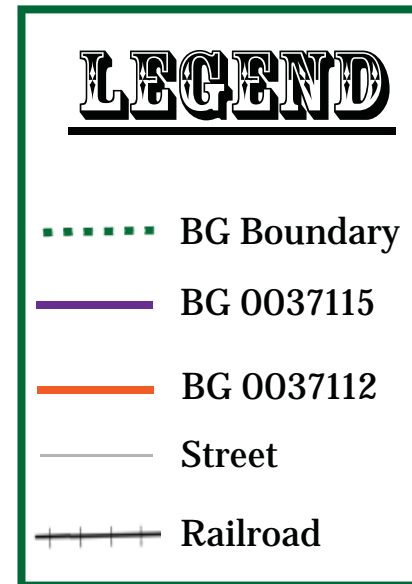
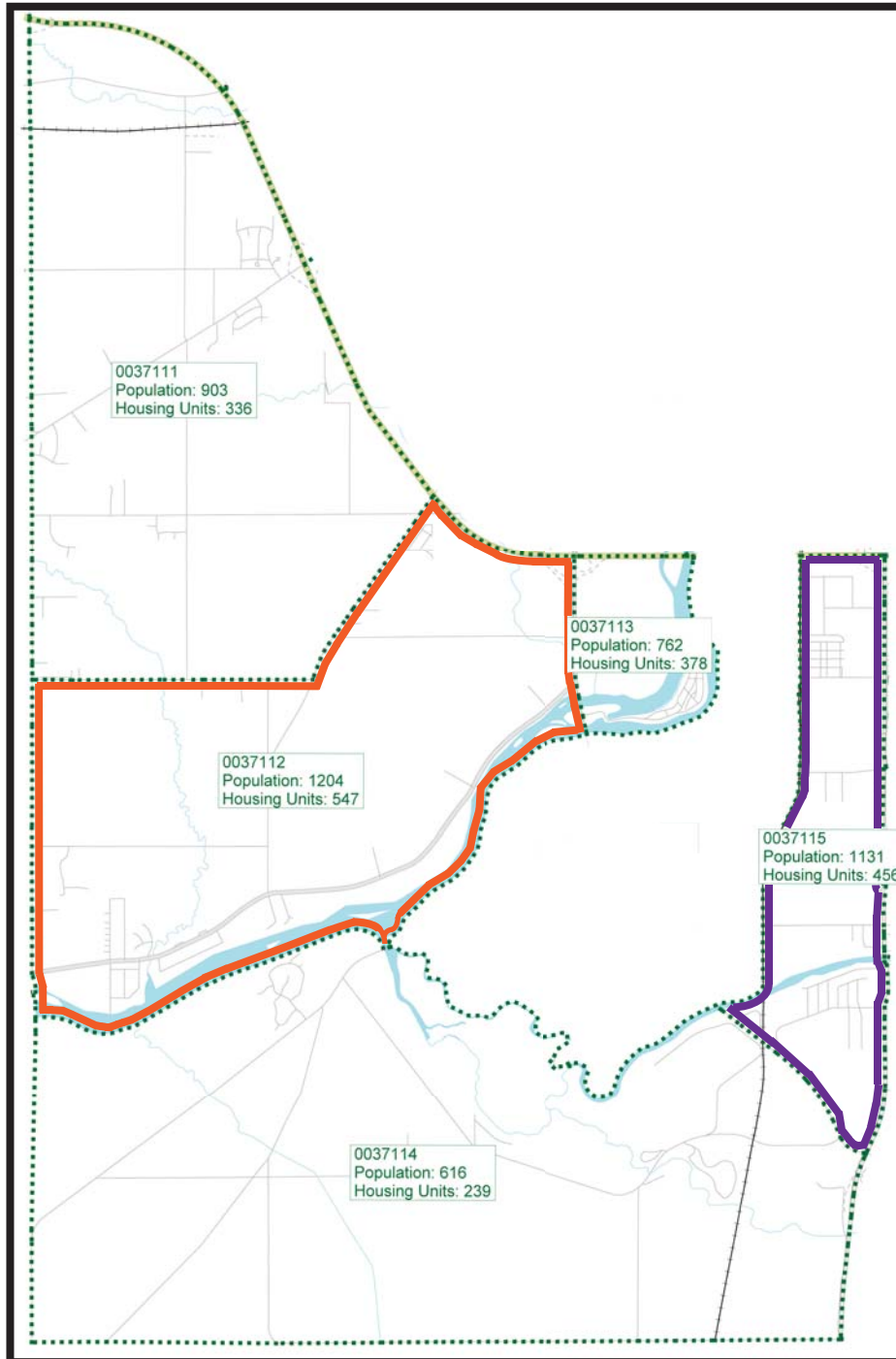
# CT 003701 Block Groups- Before



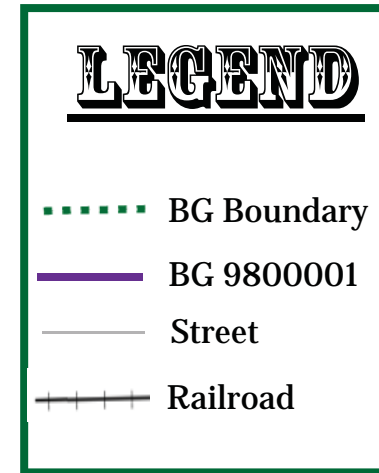
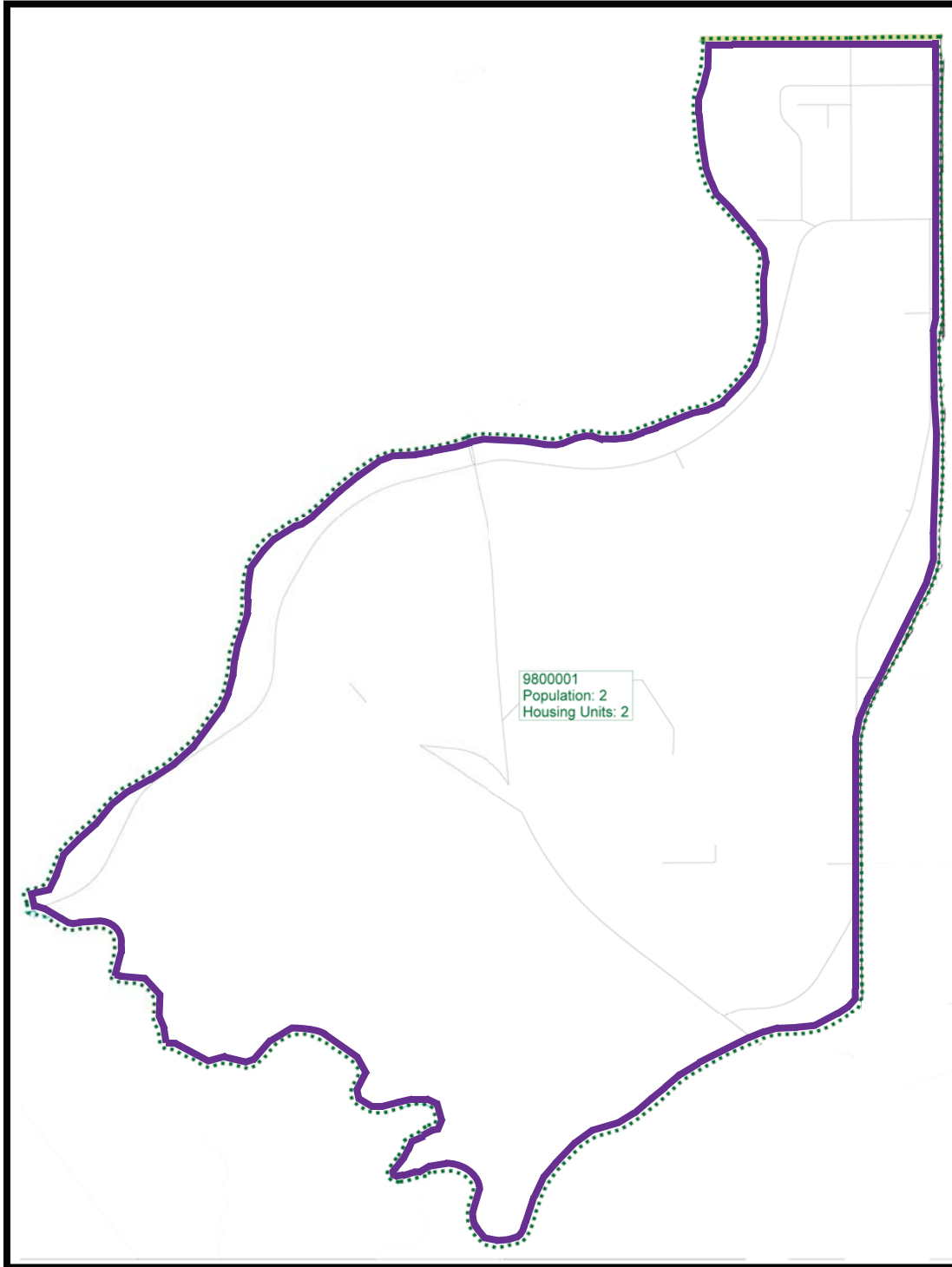
## **LEGEND**

- ..... BG Boundary
- BG 0037014
- BG 0037015
- BG 0037012
- Street
- Railroad

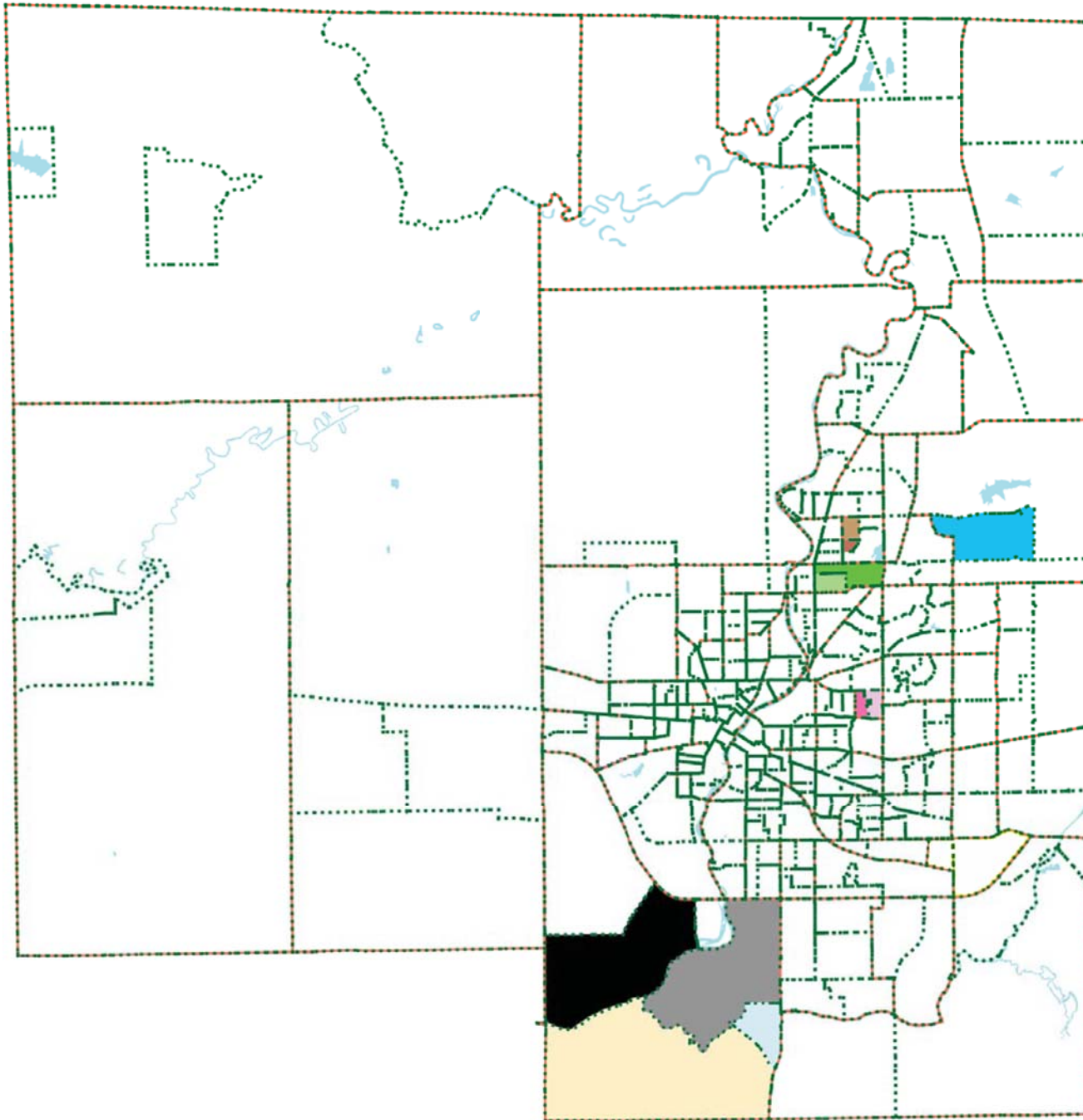
# CT 003711 Block Groups- After



# CT 980000 Block Groups- After



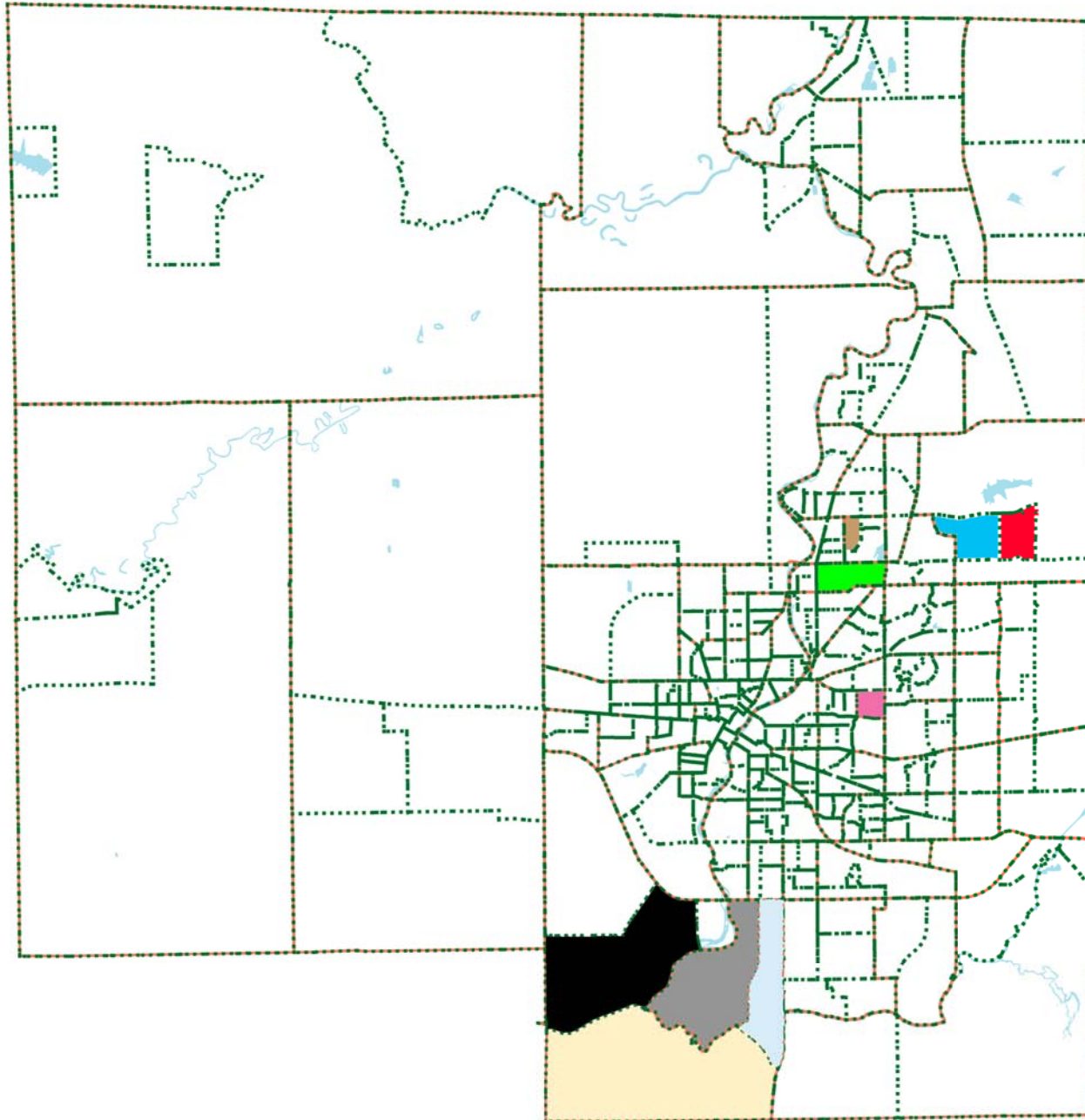
# Winnebago County Block Groups- Before



## **LEGEND**

-  CT Boundary
-  BG Boundary
-  BG 0001042
-  BG 0001043
-  BG 0002001
-  BG 0002002
-  BG 0004022
-  BG 0004023
-  BG 0037012
-  BG 0037014
-  BG 0037015
-  BG 0037016
-  BG 0038072

# Winnebago County Block Groups- After



## **LEGEND**

- CT Boundary
- - - BG Boundary
- BG 0001045
- BG 0002005
- BG 0004025
- BG 0037112
- BG 0037114
- BG 0037115
- BG 0038074
- BG 0038075
- BG 9800001