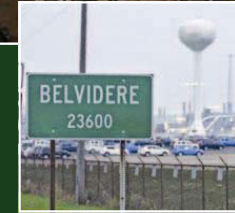
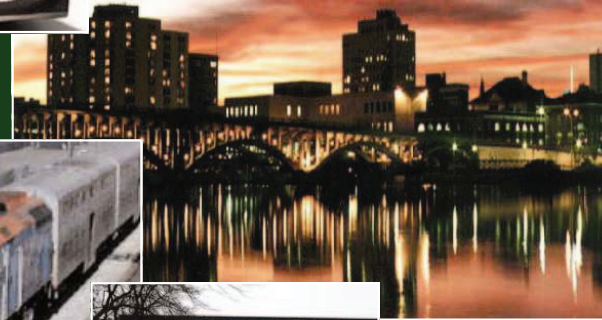
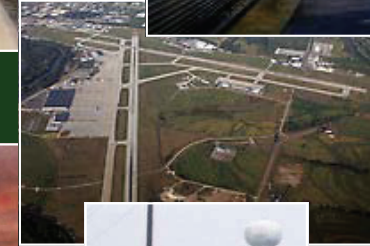
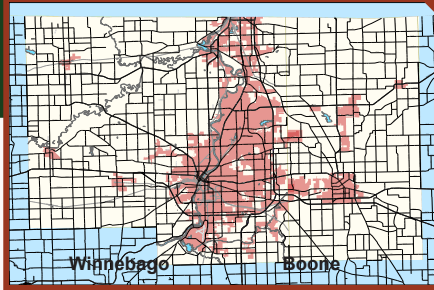


Economic Stimulus Submittal
 Rockford, IL Region
 December 2008



Submitted On Behalf Of:

Winnebago County
 Boone County
 City of Rockford
 City of Belvidere
 City of Loves Park
 City of South Beloit
 Village of Cherry Valley
 Village of Winnebago
 Village of Roscoe
 Village of Pecatonica
 Village of Rockton
 Village of Durand
 Village of New Milford

Rock Valley College
 Rockford School District 205
 Harlem School District 123
 Belvidere School District 100
 North Boone School District 200
 South Beloit School District 320
 Honenegah School District 207
 Rockton School District 140
 Pecatonica School District 321
 Winnebago School District 323
 Durand School District 322
 Shirland School District 134
 Prairie Hill School District 133
 Kinnikinnick School District 131

Northern Illinois Commuter Transportation Initiative
 Rockford Metropolitan Agency for Planning
 Rockford Area Chamber of Commerce
 The Parks Chamber of Commerce
 Belvidere Area Chamber of Commerce
 Rockford Area Economic Development Council
 Growth Dimensions
 Chicago Rockford International Airport RFD
 Rockford-Winnebago County Better Roads Association
 Northern Illinois Building Contractors Association
 Rock River Water Reclamation District
 Winnebago County Forest Preserve District
 Rockford Park District
 Illinois Department of Transportation, District 2

Document Compiled By:



Rockford Metropolitan Agency For Planning

Economic Stimulus Table of Contents

Regional Narrative	1
--------------------------	---

Tier 1

Passenger Rail Phase 1 and 2	4
Highway Construction - State & Federal Highways	9
Highway Construction – County & Township Roads	9
Highway Construction – Municipal Arterial Roads	9

Tier 2

Highway Maintenance – State & Federal Roads.....	13
Highway Maintenance – County & Township Roads	13
Highway Maintenance – Municipal Arterial Roads.....	13
Public Buildings	22
Schools	22
Flood Control	27
Fiber Optic / Broadband	27
Wastewater / Sanitary Sewer	27
Recreation Facilities	27
Water Systems	27
Public Safety	27
Intersection Safety	31

Stimulus Summary	33
------------------------	----

REGIONAL NARRATIVE

Regional Narrative

The Rockford, IL region has come together to speak with one voice in response to President – Elect Obama’s call for an economic stimulus program of infrastructure projects. This regional effort represents input from all of the stakeholders in Winnebago and Boone County compiled through a collaborative effort of community leaders and channeled through the Rockford Metropolitan Agency for Planning (RMAP). RMAP is the federally-designated Metropolitan Planning Organization for the region and was recently empowered by the RMAP Policy Board to expand its mission beyond the minimum requirements of traditional transportation planning.

The following statement from the National Association of Regional Councils embodies the spirit of the Rockford, IL regional effort. “It is imperative that any economic recovery package contain regionally strategic infrastructure investments that maintain a strong focus on the priorities of local communities, act in partnership with regional planning associations, and provide transparency in the process. NARC is pleased to present recommendations to the members of Congress and the new Administration of projects that, if funded, could immediately begin to create jobs, strengthen communities and stimulate local, regional and national economies.” The Chicago Metropolitan Agency for Planning further states, “For a recovery package to succeed at stimulating the economy, timing is critically important. But it is important to recognize the need for real reform when considering an economic recovery package and its long-term impacts.”

The economic stimulus program for the region contained herein is divided into two tiers and several categories, and to some extent, provides a priority ordering of the most critical regional needs. The regional leadership has determined that most projects contained in this submittal meet the definition of “construction ready-to-go” within 120 days, with the remainder ready for some phase of engineering or land acquisition. The building and construction trades within the region are prepared

to assemble the necessary forces of skilled and unskilled workers to urgently move these projects to construction. The engineering and construction professionals within the region stand ready to assist in this program of projects that can help to reshape the region, if not the nation.

This economic stimulus submittal program was developed using a performance-driven, outcome-based strategic planning effort within the region. Regional goals, objectives, performance measures, policies and opportunities were considered rather than a simple inventory of projects. The region has prioritized the project submittal into two tiers. Tier 1 includes passenger rail, both inter-city passenger rail and commuter rail, and highway construction of the region’s most critical highways. Tier 1 projects meet the test of job creation in the construction sectors, but also meet the test of a large-scale return on investment; the true definition of a balanced transportation system that will meet the future needs of the region. Tier 2 includes highway maintenance, public buildings and schools, safety projects, and projects of regional significance, such as flood control.

The economic stimulus submittal strives to meet the following overall goals related to the investment of public funds:

- Immediate job creation in construction sectors
- Alternative modes of travel to reduce energy consumption
- Urban core projects that revitalize neighborhoods
- Transit oriented development
- Leverage private investment and other public funds
- Reduction of traffic congestion
- Reduction in vehicle emissions
- Improved air quality
- A state of good repair for the most critical transportation links
- Improved safety for vehicles, bicycles, transit & pedestrians
- Regional economic growth
- The production and use of alternative energy
- Transportation/land use decisions that reduce urban sprawl

- Equity of transportation investments
- Promotion of infill development
- Life-cycle costing of projects
- Balanced multi-modal system that includes freight
- Environmental mitigation
- Improvement in the quality of life for all citizens

The Rockford, IL region is strongly positioned to accomplish the above goals with Tier 1 projects and high priority Tier 2 projects. The region has long suffered from a lack of a large-scale program of transportation investment. The impact to the region has been close to devastating, considering the follow facts:

- The City of Belvidere and City of Rockford currently rank in the top five communities for statewide unemployment
- The City of Rockford has been ranked with the highest unemployment in the State of Illinois 11 out of the last 17 years
- The City of Rockford has the highest crime rate in the State of Illinois
- During the last 5-7 years the region has lost 12,000 high paying manufacturing jobs
- During the last major economic recession in the early 1980s the City of Rockford had the highest unemployment in the nation
- The Surface Transportation Policy Project ranked the roads in the City of Rockford as the worst in the nation
- The health of the region is largely based on the automobile manufacturing industry with the GM assembly plant in Janesville, WI and the Chrysler assembly plant in Belvidere, IL; the GM plant closed in December 2008 and the Chrysler plant is cutting back production even though its product line are all the most energy efficient models
- The region ranks in the top communities within the State of Illinois for poverty, unemployment, crime, mortgage foreclosures, poor pavement condition, graffiti, vacant buildings, education and literacy; all of which combine to create “disorder” and a poor quality of life for many citizens.

The map on the following page shows a graphic representation of disorder for the City of Rockford. It readily shows how devastating the impact is to citizens that live in the urban core, and not surprisingly, shows that the disorder is concentrated along major highway corridors that have seen little or no investment for decades. The economic stimulus submittal for the region is focused on a balanced transportation system, good repair of public buildings and schools, and can substantially reduce the effects of disorder.

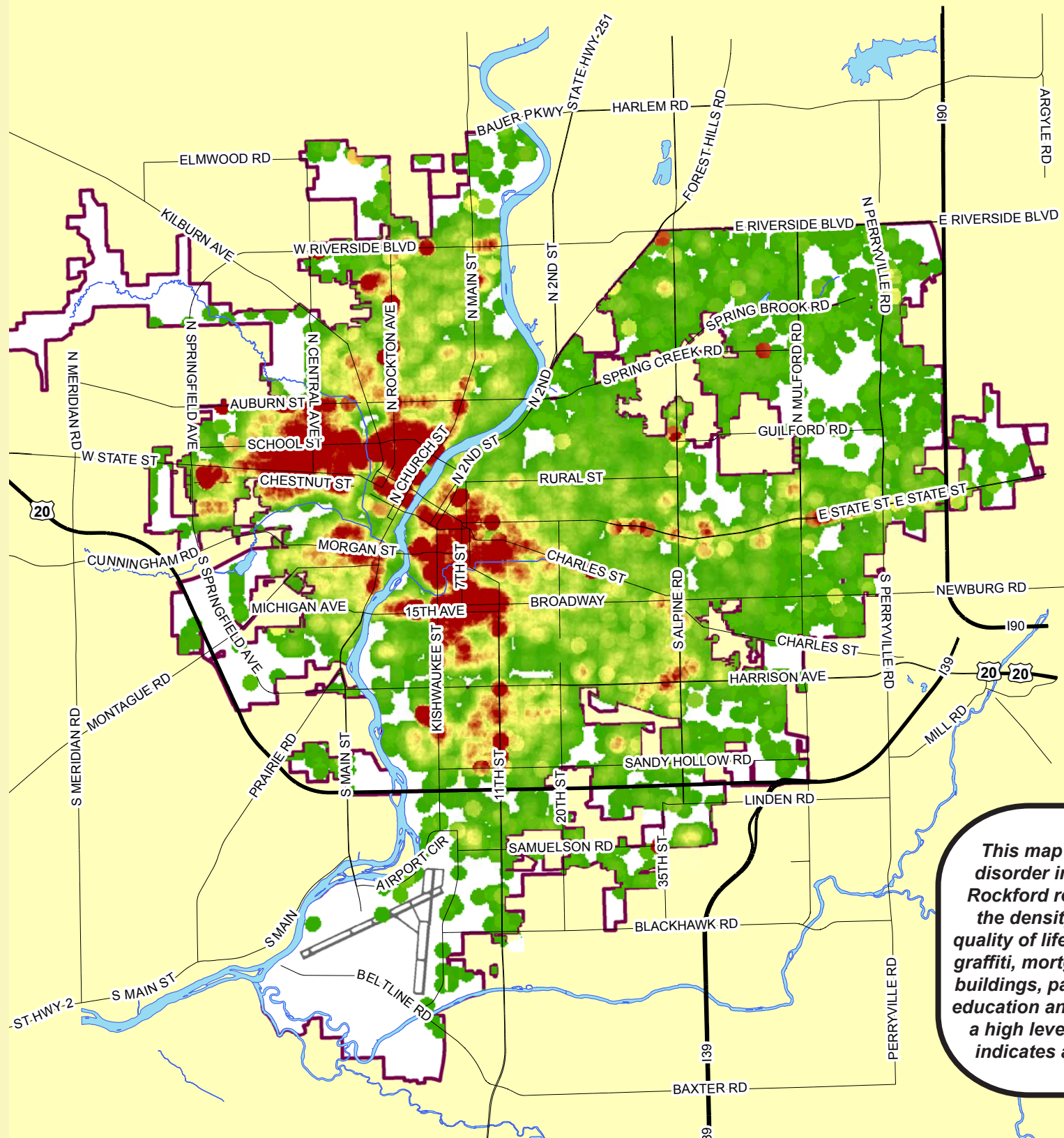
The economic stimulus submittal for the Rockford, IL region is divided into the following tiers and categories. Detailed information, plans, specifications, estimates, drawings and bid submittal documents are available upon request.

Tier 1

- Passenger Rail Phase 1
- Passenger Rail Phase 2
- Highway Construction - State & Federal Highways
- Highway Construction – County & Township Roads
- Highway Construction – Municipal Arterial Roads

Tier 2

- Highway Maintenance – State & Federal Roads
- Highway Maintenance – County & Township Roads
- Highway Maintenance – Municipal Arterial Roads
- Public Buildings
- Schools
- Flood Control
- Fiber Optic / Broadband
- Wastewater / Sanitary Sewer
- Recreation Facilities
- Water Systems
- Public Safety
- Intersection Safety



This map depicts the degree of disorder in the urban core of the Rockford region as determined by the density of issues that affect quality of life, such as crime, income, graffiti, mortgage foreclosure, vacant buildings, pavement quality, poverty, education and literacy. Red indicates a high level of disorder and green indicates a low level of disorder.

PASSENGER RAIL

Passenger Rail

The top regional priority for the Rockford, IL region is the rapid implementation of passenger rail. The Northern Illinois Commuter Transportation Initiative (NICTI) has worked with all of the stakeholders in Winnebago, Boone and McHenry Counties and has developed a detailed implementation plan. The cornerstone piece of this implementation plan is that both inter-city passenger rail and commuter rail service **must be** co-located in the same rail corridor. All of the regional partners from these three northern Illinois counties have agreed to the Union Pacific Railroad corridor, known by NICTI as CR6 and by Amtrak as Route A. Co-location ensures the prudent expenditure of public funds and allows the Amtrak inter-city service and the commuter service to work together to maximize ridership, making an early winner of this critical transportation investment for the region, and providing the maximum return of future economic development for the region.

The economic stimulus submittal for passenger rail is broken into two phases. The first phase includes the infrastructure investment to upgrade the rail track to a minimum of 79 MPH, provides grade crossing protection of all rail / highway crossings, new track connections, wayside signal upgrades, bridge and culvert improvements, passing sidings, layover facilities and stations. The Phase 1 improvements will benefit both the Amtrak inter-city service as well as the future commuter service that could be implemented within the next 2-3 years. The upgrade to a minimum of 79 MPH echoes the call from the Midwest High Speed Rail Association to think about the long-term requirements of passenger rail service as the future of the nation. The Chicago-Belvidere-Rockford-Dubuque service is paramount to the long term health of the Rockford, IL region, currently suffering the worst unemployment in Illinois. It is critical to get Amtrak operations underway as soon as possible, and the lack of a capital program in Illinois underscores the importance of the economic stimulus program to this regional transportation investment.

The second phase of the passenger rail project would secure vehicles and equipment for the operator of the commuter service and add two more stations. The second phase of the passenger rail project would not be ready-to-go for the 2009 economic stimulus program, but should be ready for future transportation investment programs, including matching funds from the State of Illinois and the local governments.

Phase 1 Passenger Rail Program	\$111,044,000
Phase 2 Passenger Rail Program	<u>\$ 70,347,000</u>
Total Passenger Rail Program	\$181,391,000

Detailed plans, specifications, estimates, operating plans and alignment maps are available upon request. Background information from the NICTI study is provided on the following pages.

Economic Stimulus Package - Passenger Rail Top Regional Priority

Background

Winnebago and Boone Counties established a coalition in 2003 to explore commuter connections to the Chicago area through a group known as the Northern Illinois Commuter Transportation Initiative (NICTI). In 2008 this group unanimously selected a 48 mile rail line (referred to as the Locally Preferred Alternative) that connects Rockford to the existing Metra service at the Elgin/Big Timber Station. The alternative utilizes the Union Pacific Railroad – Belvidere Subdivision and a small segment of the CN Freeport Subdivision. Stations are proposed in the communities of Elgin, Huntley, Marengo, Belvidere and Rockford, as shown below.



The capital cost estimate is approximately \$247 million, (approximately \$3 million per mile). Capital costs include rolling stock (locomotives and passenger cars), track upgrades for commuter rail speeds, signal system, passing tracks, stations, parking lots, feeder bus vehicles, and junctions near Big Timber and at Mulford Road to make a connection to the CN into Rockford. A summary of costs, aggregated by New Start cost categories, follows:

Element	Capital Cost (in million \$)	Percent of Cost
Guideway and Track	\$43.9	23%
Stations, Stops, Terminals	\$14.3	7%
Support Facilities	\$4.8	2%
Sitework and Special Conditions	\$16.6	9%
Systems	\$43.0	23%
Right of Way	\$3.2	2%
Vehicles	\$47.9	25%
Professional Services	\$16.3	9%
SUBTOTAL	\$190	100%
Contingency	\$57	
TOTAL	\$247	

The operating cost estimate is approximately \$10 million annually. Operating costs include operations (labor, overhead and fuel, and maintenance of way), protective bus service and feeder bus operating costs.

Amtrak Service to Rockford

Senator Durbin has been a strong advocate for Amtrak service being restored between Chicago, Rockford and Dubuque. IDOT has agreed to fund passenger service connecting these three communities. To determine the route that would be used, IDOT Bureau of Railroads funded Amtrak to conduct an analysis of several alternate routes. The report was finalized in June 2007. Route A, evaluated as one of the alternatives for the Amtrak service to Rockford / Dubuque, is the same alignment that was selected as the Locally Preferred Alternative in the NICTI Alternatives Analysis. Capital costs listed in the Amtrak report for this route cover primarily track upgrades.

Benefits of Co-Location of Commuter and Intercity Service

There are potentially many benefits to be realized if commuter and intercity service were to co-locate on the NICTI Locally Preferred Alternative / Amtrak Route A alignment.

- Benefits to intercity service would be improved speed, frequency, ridership and reliability.
- The commuter service would benefit from capital cost savings.
- Both the intercity and commuter service would see reduced operating costs.

The additional frequencies that the commuter service provides (at least as far as Rockford) would be expected to create ridership enhancements on the Amtrak train, and possibly the commuter train as well. This effect would be similar to the Amtrak / Metrolink synergies that were experienced when the Rail2Rail program was implemented in the Los Angeles region. By honoring each other's tickets, the ridership on both lines grew based on the fact that riders perceived more options to meet their travel needs. The Chicago to Rockford intercity corridor would undoubtedly benefit from additional frequencies beyond the single inbound and outbound trips currently proposed.

Project Summary

The capital cost items that are ready to go for an early 2009 Economic Stimulus package are summarized on the following pages. The full commuter passenger rail project would follow in a subsequent phase, using the infrastructure that will be modernized in the 1st phase. The full commuter project would leverage the entire Amtrak investment because of the decision to co-locate the inter-city passenger rail service with the commuter passenger rail service.

Passenger Rail

Location	Project Description	Project Cost (000)	Project Sponsor	Project Type
Passenger Rail Track Upgrades Phase 1	Mile post 17.0 to 40.3	\$580	METRA	Track Improvements
Passenger Rail Track Upgrades Phase 1	Mile post 45.7 to 65.5	\$5,113	NICTI / UP Railroad	Track Improvements
Passenger Rail Track Upgrades Phase 1	Mile post 66.1 to 87.0	\$17,112	NICTI / UP Railroad	Track Improvements
Passenger Rail Track Upgrades Phase 1	Mile post 80.1 to 87.6	\$1,943	NICTI / CN IC Railroad	Track Improvements
Passenger Rail Track Upgrades Phase 1	Connection at Big Timber in Elgin	\$5,066	NICTI / UP Railroad & METRA	New Track Connection
Passenger Rail Track Upgrades Phase 1	Connection at Mulford Road in Rockford	\$2,830	NICTI / UP & CNIC Railroad	New Track Connection
Passenger Rail Track Upgrades Phase 1	Grade Crossing Improvements, UP RR, Elgin to Marengo	\$4,358	NICTI / UP Railroad	Grade Crossing Improvements
Passenger Rail Track Upgrades Phase 1	Grade Crossing Improvements, UP RR, Marengo to Rockford	\$6,158	NICTI / UP Railroad	Grade Crossing Improvements
Passenger Rail Track Upgrades Phase 1	Grade Crossing Improvements, CNIC RR, Rockford	\$4,487	NICTI / CNIC Railroad	Grade Crossing Improvements
Passenger Rail Track Upgrades Phase 1	METRA Elgin Interlocking	\$1,126	NICTI / CNIC Railroad, METRA	Wayside Signal Improvements
Passenger Rail Track Upgrades Phase 1	UPRR CTC Signal System milepost 45.7 to 66.1	\$10,276	NICTI / UP Railroad	Wayside Signal Improvements
Passenger Rail Track Upgrades Phase 1	UPRR CTC Signal System milepost 66.1 to 87.0	\$8,179	NICTI / UP Railroad	Wayside Signal Improvements
Passenger Rail Track Upgrades Phase 1	CNIC Upgrade ABS to CTC Signal System milepost 80.1 to 87.6	\$8,179	NICTI / UP Railroad	Wayside Signal Improvements
Passenger Rail Track Upgrades Phase 1	CNIC Upgrade ABS to CTC Signal System milepost 80.1 to 87.6	\$8,179	NICTI / UP Railroad	Wayside Signal Improvements
Passenger Rail Track Upgrades Phase 1	Upgrade Open Deck Bridges to Ballast Deck, UP RR	\$675	NICTI / UP Railroad	Bridge & Culvert Improvements
Passenger Rail Track Upgrades Phase 1	Layover Facility, CNIC Railroad	\$4,802	NICTI / CNIC Railroad	Layover Facility
Passenger Rail Track Upgrades Phase 1	Upgrade of METRA Station Elements	\$1,627	NICTI / METRA	Stations

Passenger Rail

Location	Project Description	Project Cost (000)	Project Sponsor	Project Type
Passenger Rail Track Upgrades Phase 1	UP RR milepost 57.0 Huntley Station, 250 car parking	\$2,499	NICTI	Stations
Passenger Rail Track Upgrades Phase 1	UP RR milepost 66.1 Marengo Station, 250 car parking	\$2,499	NICTI	Stations
Passenger Rail Track Upgrades Phase 1	UP RR milepost 78.2 Belvidere Station, 100 car parking	\$1,846	NICTI	Stations
Passenger Rail Track Upgrades Phase 1	UP RR milepost 85.7 Rockford Station, 250 car parking	\$2,677	NICTI	Stations
Passenger Rail Track Upgrades Phase 1	UP RR milepost 85.7 Eastside Rockford Station, 250 car parking	\$2,677	NICTI	Stations
Passenger Rail Track Upgrades Phase 1	UP RR Siding milepost 47.6 to 49.4 at Big Timber	\$4,078	NICTI / UP Railroad	Passing Sidings
Passenger Rail Track Upgrades Phase 1	UP RR Siding milepost 69.1 to 70.8 at Big Timber	\$4,078	NICTI / UP Railroad	Passing Sidings
Phase 1 Subtotal		\$111,044		
Passenger Rail Track Upgrades Phase 2	UP RR milepost 82.0 Tollway Station Point, 500 car parking	\$17,863	NICTI	Stations
Passenger Rail Track Upgrades Phase 2	UP RR milepost 86.6 Downtown Rockford Station, 100 car parking	\$2,134	NICTI	Stations
Passenger Rail Track Upgrades Phase 2	UP RR Siding milepost 59.5 to 61.2 at Union	\$4,078	NICTI / UP Railroad	Passing Sidings
Passenger Rail Track Upgrades Phase 2	UP RR Siding milepost 77.4 to 77.9 at Green Giant	\$1,940	NICTI / UP Railroad	Passing Sidings
Passenger Rail Track Upgrades Phase 2	CNIC RR Siding milepost 83.6 to 85.0 at Buckbee / Rockford Junction	\$972	NICTI / CNIC Railroad	Passing Sidings
Passenger Rail Vehicles Phase 2	Locomotive, Reconditioned Amtrak F40PH, 4 Each	\$9,004	NICTI	Vehicles & Equipment
Passenger Rail Vehicles Phase 2	Cab Car, Bi-Level, Nippon Sharyo (METRA), 5 Each	\$9,380	NICTI	Vehicles & Equipment
Passenger Rail Vehicles Phase 2	Trailer Car, Bi-Level, Nippon Sharyo (METRA), 5 Each	\$24,274	NICTI	Vehicles & Equipment
Passenger Rail Vehicles Phase 2	Shuttle Bus, Cut-Away, 23 Foot, 8 Each	\$640	NICTI	Vehicles & Equipment
Passenger Rail Vehicles Phase 2	Work Train, 1 Each	\$62	NICTI	Vehicles & Equipment
Phase 2 Subtotal		\$70,347		
Total Passenger Rail		\$181,391		

HIGHWAY CONSTRUCTION

Highway Construction

The second regional priority for the Rockford, IL region is the construction, modernization and upgrade of the state and federal highway system and the strategic local arterial streets and highways in the region. Most of the marked highway system provides the entry to the urban core of the cities and villages in the region, and these transportation facilities have not seen significant investment for decades. Additionally the projects in this category include new regional connections to the interstate system that partner with the Illinois Toll Highway Authority and the Illinois Department of Transportation. Projects in this category have the ability to provide long term economic growth as well as maximize the number of construction jobs that can be generated in the region as part of the economic stimulus program. Most of the projects in this category are collaborative efforts of several transportation agencies, many of which have tremendous stakeholder input and support that has been cultivated over many years.

The total highway construction package in this submittal totals \$501,937,000. The projected impact to the construction industry is projected to be 2,510 workers full time for two years (one worker for one year for every \$100,000 in highway investment). This construction activity would provide a tremendous boost to the unemployment rate in Winnebago County, Boone County, and the City of Rockford, which has the highest unemployment rate in Illinois and one of the highest in the nation. A strong case can also be made that the deferred investment in major highway facilities in the region has contributed to other regional issues. Rockford continues to hold the highest crime rate in Illinois, the lowest literacy rate of major cities in Illinois, one of the highest mortgage foreclosure rates in Illinois; collectively referred to as “disorder”. The disorder map presented in the Regional Narrative section provides overwhelming evidence of the importance of highway investment to the urban core.

The highway construction category is broken down as follows:

State and Federal Highways	\$262,491,000
County and Township Roads	\$135,400,000
Municipal Arterial Roadways	<u>\$104,046,000</u>
Total Highway Construction Program	\$501,937,000

Detailed construction documents, plans, specifications and estimates of individual projects are available upon request.

Highway Construction

State Highways	Project Description	Project Cost (000)	Project Sponsor	Project Type
IL 2 - South Main Street	Beltline Rd. to Cedar St.	\$17,646	Illinois DOT	Reconstruction
IL 173	IL 251 to Interstate 90/39	\$58,900	Illinois DOT	Reconstruct and Widen
Bus US 20 - West State Street	Rock River to Meridian Rd.	\$20,700	Illinois DOT	Reconstruct and Widen
IL 2 - North Main Street	Auburn St. to Riverside Blvd. Includes modern roundabout at IL 2 and Auburn St.	\$63,385	Illinois DOT	Reconstruct and Widen, Roundabout
IL 2 - North Main Street	Elmwood Rd. to Latham Rd. Includes new intersection at IL 2 and Latham Rd. due to severe safety problem.	\$32,210	Illinois DOT	Reconstruct and Widen, Safety Improvements
Bus US 20	Shaw Rd. to Doc Wolfe Dr. Widening of state highway from 2-lane to 4-lane.	\$10,000	Illinois DOT	Reconstruct and Widen, Safety Improvements
IL 76	Bus US 20 to Woodstock Rd. Widening of state highway from 2-lane to 4-lane plus traffic signals.	\$8,000	Illinois DOT	Reconstruct and Widen, Safety Improvements
Bus US 20	Anderson Drive intersection. Widening and installation of turn lanes.	\$1,000	Illinois DOT	Reconstruct and Widen, Safety Improvements
IL 251	Harlem Rd. to Roosevelt Rd.	\$650	Illinois DOT	Median Reconstruction
Irene Road / Tollway Interchange	Right-of-way purchase and construction of new tollway interchange to serve the Belvidere Chrysler facility and the needs of Boone County and the City of Belvidere.	\$50,000	Illinois Tollway, Belvidere and Boone County	New Tollway Interchange
County and Township Roads				
Poplar Grove Road Bridge	Complete replacement of bridge over Kishwaukee River. Includes recreation path on the structure.	\$2,000	Boone County	New Bridge and Recreation Path
Shaw Road & Regina Drive Intersection	Complete reconstruction of the intersection including turn lanes, cross road pipe replacement, new pavement and shoulders.	\$400	Boone County	Reconstruct Intersection
Bell School Road	Newburg Rd. to Spring Creek Rd. Reconstruct, add lanes, and intersection improvements.	\$15,000	Winnebago County	Reconstruct and Widen, Safety Improvements
Roscoe Road	IL 2 to IL 251. Widen to 4 lanes including River bridge.	\$16,000	Winnebago County	Reconstruct and Widen, Safety Improvements
Latham / Ralston Road	IL 2 to IL 251. Widen to 4 lanes including River bridge.	\$17,000	Winnebago County	Reconstruct and Widen, Safety Improvements
Perryville Road	Swanson Rd. to Belvidere Rd. New Roadway.	\$5,000	Winnebago County	New Roadway
Elmwood / Owen Center Road	IL 2 to Riverside Blvd. Widen to 4 lanes.	\$14,000	Winnebago County	Reconstruct and Widen, Safety Improvements
Rockton Road	Willow Brook Rd. to IL 251. Widen to 5 lanes.	\$3,500	Winnebago County	Reconstruct and Widen, Safety Improvements
East Side Connector (CH 5)	Bell School Rd. to Riverside Blvd. and Orth Rd. to IL 173	\$47,000	Winnebago County	New Roadway & Connection to Tollway

Highway Construction

County and Township Roads	Project Description	Project Cost (000)	Project Sponsor	Project Type
Edson Road	IL 251 to Rothwell Rd. Reconstruct for 120,000 lb. loads.	\$6,000	Winnebago County	Reconstruct
Meridian Road	Knapp Rd. to Cunningham Rd. Reconstruct and intersection improvements.	\$4,000	Winnebago County	Reconstruct and Widen, Safety Improvements
Honenegah Road	IL 2 to Checkerberry Ln. Reconstruct and widen to 3 lanes.	\$2,500	Winnebago County	Reconstruct and Widen
Farm School Road	Leech Rd. to Pecatonica Rd. and Best Rd. to Goeke Rd.	\$3,000	Durand Township	Reconstruct and Widen
Municipal Arterial Roadways				
Riverside Boulevard Bridge	Rehabilitation and widening of bridge over creek.	\$1,200	City of Loves Park	Reconstruct & Widen
Garden Plain Avenue Bridge	Rehabilitation and widening of bridge over creek.	\$750	City of Loves Park	Reconstruct & Widen
Paulson Road	Riverside Blvd. To Spring Brook Rd. Complete reconstruction.	\$4,000	City of Loves Park	Reconstruct & Widen
Paulson Road	Orth Rd. to Harlem Rd. Reconstruct, add turn lanes, intersection improvements.	\$10,000	City of Loves Park	Reconstruct & Widen
Orth Road	Interstate Blvd. To Olson Rd. Reconstruct, turn lanes, intersection improvements.	\$10,000	City of Loves Park	Reconstruct & Widen
Bell School Road	Riverside Blvd. To Harlem Rd. Reconstruct, turn lanes, intersection improvements.	\$10,000	City of Loves Park	Reconstruct & Widen
Kishwaukee Street Reconstruction	Harrison Ave. to Sandy Hollow Rd. Reconstruct, turn lanes, intersection improvements.	\$6,540	City of Rockford	Reconstruct & Widen
Morgan Street & Central Avenue Reconstruction	Reconstruct, turn lanes, intersection improvements.	\$8,000	City of Rockford	Reconstruct & Widen
Main Street Downtown Mall Removal	Remove Mall and replace with new roadway.	\$3,500	City of Rockford	New Roadway
Shiloh Road & Trainer Road Extension	Reconstruct, turn lanes, intersection improvements.	\$500	City of Rockford	New Roadway Extension
Falcon Road	Beltline Rd. to Airport Dr. Reconstruct & Widen	\$6,000	City of Rockford, Chicago Rockford Airport	Reconstruct & Widen
Airport Drive	IL 2 to IL 251. Reconstruct and widen to 4 lanes.	\$4,600	City of Rockford, Chicago Rockford Airport	Reconstruct & Widen
Local Bridge Rehabilitation	Group 1 Wearing surface projects on 11 bridges.	\$1,020	City of Rockford	Bridge Rehabilitation
Local Bridge Rehabilitation	Group 2 Deck replacement projects on 2 bridges.	\$9,842	City of Rockford	Bridge Rehabilitation
Local Bridge Rehabilitation	Group 3 Superstructure replacement projects on 4 bridges.	\$2,971	City of Rockford	Bridge Rehabilitation
Local Bridge Rehabilitation	Group 4 Culvert projects on 7 bridges.	\$1,781	City of Rockford	Bridge Rehabilitation
Local Bridge Rehabilitation	Group 5 Structure removal projects on 2 bridges.	\$420	City of Rockford	Bridge Rehabilitation

Highway Construction

Municipal Arterial Roadways	Project Description	Project Cost (000)	Project Sponsor	Project Type
Local Bridge Rehabilitation	Group 6 Bridge rehabilitation projects on 3 bridges.	\$1,835	City of Rockford	Bridge Rehabilitation
Local Bridge Rehabilitation	Group 7 Structure replacement projects on 2 bridges.	\$1,170	City of Rockford	Bridge Rehabilitation
Logistics Parkway	Samuelson Rd. to Blackhawk Rd.	\$3,000	City of Rockford, Rockford Airport	New Roadway in Global Trade Park
Goodhue Street	Shirland to Rood.	\$469	City of South Beloit	Reconstruct & Widen
Oakgrove Street	Donor to Blackhawk	\$281	City of South Beloit	Reconstruct & Widen
Rood Road	Goodhue to Miller	\$263	City of South Beloit	Reconstruct & Widen
Adams Street	Rood to Shirland	\$469	City of South Beloit	Reconstruct & Widen
Hayes & Greenwood Intersection	Reconstruct intersection.	\$113	City of South Beloit	Intersection Improvement
Lathrop Street	Wheeler to Thompson	\$188	City of South Beloit	Reconstruct & Widen
Oakgrove Street	Fairview to Northwestern	\$150	City of South Beloit	Reconstruct & Widen
Marie Avenue	Street reconstruction.	\$1,100	Village of Machesney Park	Reconstruction
Evans Avenue	Street reconstruction.	\$980	Village of Machesney Park	Reconstruction
Sycamore Lane	Street reconstruction.	\$500	Village of Machesney Park	Reconstruction
Greenview / Leland	Street reconstruction.	\$535	Village of Machesney Park	Reconstruction
Roosevelt Road	IL 251 to Alpine Rd.	\$6,000	Village of Machesney Park	Reconstruction
Mark Park Mall Drive	Reconstruction of roadways around mall, new multi-use path	\$4,000	Village of Machesney Park	Reconstruction
Taylor Street	Box Culvert Replacement.	\$90	Village of Pecatonica	Reconstruction
6th Street	Taylor to Jackson	\$265	Village of Pecatonica	Reconstruction
10th Street	Taylor to Jackson	\$135	Village of Pecatonica	Reconstruction
Wagon Wheel Road	IL 75 to Williamson	\$1,079	Village of Rockton	Reconstruct & Widen
Rock Rose Court	New access road to IL 251.	\$300	Village of Roscoe	New Roadway

Total Highway Construction

\$501,937

HIGHWAY MAINTENANCE

Highway Maintenance

Still important, but of lower priority for the Rockford, IL region is the maintenance of local street and highways. Many county, township and municipal streets can benefit from resurfacing at this critical juncture in the pavement life cycle. These projects can be rapidly deployed at the local level with an accelerated schedule of project letting. This category of projects is also very helpful to the smaller contractor who may not be able to complete for the higher priority category projects listed earlier. A well balanced program of transportation investment can provide needed job growth in the construction sectors while not necessarily making an impact to regional economic growth over the long term.

The total highway maintenance package in this submittal totals \$119,877,000. The projected impact to the construction industry is projected to be 1,199 workers full time for one year (one worker for one year for every \$100,000 in highway investment). This maintenance activity would assist the higher priority construction programs to fight the high unemployment in the construction job sector. The highway maintenance program of projects will also help the strained budgets of the local governments due to the economic downturn. Additionally, the severe winter weather of the last couple of years in northern Illinois has drawn needed funds from other local programs as well as contributed to the rapid deterioration of roadways in need of maintenance.

The highway maintenance category is broken down as follows:

State and Federal Highways	\$ 18,500,000
County and Township Roads	\$ 79,277,000
Municipal Arterial Roadways	<u>\$ 22,100,000</u>
Total Highway Maintenance Program	\$119,877,000

Many of these maintenance projects can move to construction with a performance specification. It is anticipated that rapid deployment of these projects will be possible, and most, if not all, can be completed in a single construction season.

Highway Maintenance

State Highways	Project Description	Project Cost (000)	Project Sponsor	Project Type
IL 251 / Whitman Street Interchange	Extensive rehabilitation is badly needed for this vital urban interchange in the central city of Rockford. Pavement condition index is less than 10.	\$2,500	Illinois DOT	Resurfacing and Joint Repair
IL 2 - Church Street	John St. to Cedar St. in the westside downtown core of Rockford. Adjacent to the new \$65 million Federal Courthouse and the renovated MetroCentre (local investment of \$21 million).	\$1,500	Illinois DOT	Resurfacing
IL 2 - South Main Street	Pelley Rd. to US 20 Interchange just north of the Chicago-Rockford International Airport. Includes new commercial intersection that opens up 100 acres of prime industrial property in the Rockford Global Tradepark Jobs recovery TIF.	\$4,000	Illinois DOT	Widen & Resurface
Bus US 20 - Jefferson Street	Walnut St. to Avon St. in the westside downtown core of Rockford in the most economically depressed area of the region.	\$4,250	Illinois DOT	Resurface, Curb & Gutter Repair
IL 251 - Kishwaukee Street	10th Ave. to 1st Ave. in the eastside edge of the downtown Rockford core. Certain sections of this primary gateway from the Chicago Rockford International Airport to downtown Rockford has seen recent investment.	\$1,000	Illinois DOT	Resurface, Curb & Gutter Repair
IL 2 - North Main Street	Auburn St. to Riverside Blvd. A strategic arterial that provides a downtown entry, this corridor has lacked investment for decades.	\$3,500	Illinois DOT	Resurfacing
IL 251 - North 2nd Street	Whitman Interchange to Jefferson St. immediately north of the downtown Rockford core. Poor riding quality and need for median replacement.	\$1,000	Illinois DOT	Resurface, Median Replacement
IL 70 - Kilburn Avenue	Auburn St. to West State St. immediately west of the downtown Rockford core. Poor riding quality and need for median replacement.	\$750	Illinois DOT	Resurface, Median Replacement
County and Township Roads				
Poplar Grove Road	Marengo Rd. to Whiting Rd. 5.25 miles in Boone County. Project includes a HMA overlay and aggregate shoulders.	\$800	Boone County Highway Department	Resurface, Aggregate Shoulders
Garden Prairie Road	US 20 to Woodstock Rd. 4.1 miles in Boone County. Project includes a HMA overlay and aggregate shoulders.	\$650	Boone County Highway Department	Resurface, Aggregate Shoulders
Calendonia Road	IL 76 to IL 173. 5.0 miles in Boone County. Project includes a HMA overlay and aggregate shoulders.	\$750	Boone County Highway Department	Resurface, Aggregate Shoulders

County & Township Roads (con't)	Project Description	Project Cost (000)	Project Sponsor	Project Type
Shaw Road	US 20 to Riverside Rd. 3.1 miles in Boone County. Project includes a HMA overlay and aggregate shoulders.	\$500	Belvidere Township	Resurface, Aggregate Shoulders
Olson Road	Riverside Rd. to Orth Rd. 0.5 miles in Boone County. Project includes a cold mill recycle pavement, structure replacement, subsurface drainage, HMA overlay and aggregate shoulders.	\$250	Belvidere Township Road District	Resurface, Aggregate Shoulders, Drainage
Epwoth Road	US 20 to Lawrenceville. 0.7 miles in Boone County. Project includes a HMA overlay and aggregate shoulders.	\$150	Bonus Township Road District	Resurface, Aggregate Shoulders
Spring Road	US 20 to Garden Prairie Rd. 2.5 miles in Boone County. Project includes a HMA overlay and aggregate shoulders.	\$575	Bonus Township Road District	Resurface, Aggregate Shoulders
Squaw Prairie Road	Grange Hall Rd. to Russellville Rd. 1.0 miles in Boone County. Project includes a HMA overlay and aggregate shoulders.	\$150	Bonus Township Road District	Resurface, Aggregate Shoulders
Denny Road	Marengo Rd. to Woodstock Rd. 2.5 miles in Boone County. Project includes a HMA overlay and aggregate shoulders.	\$375	Bonus Township Road District	Resurface, Aggregate Shoulders
Russellville Road	Piscasaw Creek to Capron Rd. 3.2 miles in Boone County. Project includes a HMA overlay and aggregate shoulders.	\$500	Boone Township Road District	Resurface, Aggregate Shoulders
North Boone School Road	Township Line to Capron Rd. 2.0 miles in Boone County. Project includes a HMA overlay and aggregate shoulders.	\$300	Boone Township Road District	Resurface, Aggregate Shoulders
Orth Road	County Line Rd. to 2.0 miles west in Boone County. Project includes a HMA overlay and aggregate shoulders.	\$300	Boone Township Road District	Resurface, Aggregate Shoulders
Edson Road and KB Road	Starting and ending at Russellville Rd. for a distance of 2.6 miles in Boone County. Project includes a HMA overlay and aggregate shoulders.	\$400	Boone Township Road District	Resurface, Aggregate Shoulders
Wange Road	County Line Rd. to Capron Rd. 2.0 miles in Boone County. Project includes a HMA overlay and aggregate shoulders.	\$300	Boone Township Road District	Resurface, Aggregate Shoulders
Centerville Road	County Line Rd. to Capron Village limits. 1.5 miles in Boone County. Project includes a HMA overlay and aggregate shoulders.	\$250	Boone Township Road District	Resurface, Aggregate Shoulders
Orth Road	Galloway Ln. to Pony Ln. 1.5 miles in Boone County. Project includes a HMA overlay and aggregate shoulders.	\$250	Caledonia Township Road District	Resurface, Aggregate Shoulders
Dawson Lake Road	Beloit Rd. to Caledonia Rd. 0.75 miles in Boone County. Project includes a HMA overlay and aggregate shoulders.	\$120	Caledonia Township Road District	Resurface, Aggregate Shoulders

County & Township Roads (con't)	Project Description	Project Cost (000)	Project Sponsor	Project Type
Beloit Road	Orth Rd. to Belvidere Rd. 3.5 miles in Boone County. Project includes a HMA overlay and aggregate shoulders.	\$550	Caledonia Township Road District	Resurface, Aggregate Shoulders
North Boone School Road	IL 76 to Caledonia Rd. 2.0 miles in Boone County. Project includes a HMA overlay and aggregate shoulders.	\$450	Caledonia Township Road District	Resurface, Aggregate Shoulders
Bloods Point Road	Fairdale Rd. to Wheeler Rd and Cherry Valley Rd. to Pearl Street Rd. 3.75 miles in Boone County. Project includes a HMA overlay and aggregate shoulders.	\$570	Flora Township Road District	Resurface, Aggregate Shoulders
Davis School Road	Pearl Street Rd. to Woods Rd. 0.8 miles in Boone County. Project includes a HMA overlay and aggregate shoulders.	\$150	Flora Township Road District	Resurface, Aggregate Shoulders
Townhall Road	Interstate 90 to Poole Rd. 3.0 miles in Boone County. Project includes a HMA overlay and aggregate shoulders.	\$475	Flora Township Road District	Resurface, Aggregate Shoulders
Bates Road	Cherry Valley Rd. to Stone Quarry Rd. 2.6 miles in Boone County. Project includes a HMA overlay and aggregate shoulders.	\$400	Flora Township Road District	Resurface, Aggregate Shoulders
Burr Oak Road	Hunter Rd. to Coon Trail Rd. 3.0 miles in Boone County. Project includes a HMA overlay and aggregate shoulders.	\$450	Leroy Township Road District	Resurface, Aggregate Shoulders
Free School Road	Manchester Rd. to State Line Rd. 1.7 miles in Boone County. Project includes leveling binder, seal coat surface and aggregate shoulders.	\$200	Manchester Township Road District	Seal Coat, Aggregate Shoulders
Grade School Road	Manchester Rd. to Hunter Rd. 3.5 miles in Boone County. Project includes leveling binder, seal coat surface and aggregate shoulders.	\$200	Manchester Township Road District	Seal Coat, Aggregate Shoulders
North Boone School Road	Caledonia Rd. to Grade School Rd. 1.25 miles in Boone County. Project includes a HMA overlay and aggregate shoulders.	\$300	Manchester Township Road District	Resurface, Aggregate Shoulders
Beaverton Road	Edson Rd. to North Boone School Rd. 3.5 miles in Boone County. Project includes a HMA overlay and aggregate shoulders.	\$800	Poplar Grove Township Road District	Resurface, Aggregate Shoulders
Centerville Road	IL 76 to Beaverton Rd. 2.75 miles in Boone County. Project includes a HMA overlay and aggregate shoulders.	\$650	Poplar Grove Township Road District	Resurface, Aggregate Shoulders

County & Township Roads (con't)	Project Description	Project Cost (000)	Project Sponsor	Project Type
North Boone School Road	IL 76 to Poplar Grove Rd. 1.6 miles in Boone County. Project includes a HMA overlay and aggregate shoulders.	\$300	Poplar Grove Township Road District	Resurface, Aggregate Shoulders
Edson Road	Russellville Rd. to Poplar Grove Village limits. 1.9 miles in Boone County. Project includes a HMA overlay and aggregate shoulders.	\$450	Poplar Grove Township Road District	Resurface, Aggregate Shoulders
Shattuck Road	Davis School Rd. to Elk Dr. 5.3 miles in Boone County. Project includes a HMA overlay and aggregate shoulders.	\$800	Spring Township Road District	Resurface, Aggregate Shoulders
Davis School Road	Township line to Genoa Rd. 2.5 miles in Boone County. Project includes a HMA overlay and aggregate shoulders.	\$375	Spring Township Road District	Resurface, Aggregate Shoulders
Fruit Farm Road	Shattuck Rd. to Garden Prairie Rd. 1.25 miles in Boone County. Project includes a HMA overlay and aggregate shoulders.	\$200	Spring Township Road District	Resurface, Aggregate Shoulders
Willow Brook Road	Elevator Rd. to McCurry Rd. Widen & Resurface.	\$250	Winnebago County	Widen & Resurface
Prairie Hill Road	IL 251 to Boone County Line. Widen, change grade, and resurface.	\$2,000	Winnebago County	Widen & Resurface
Old River Road	Latham Rd. to IL 75. Resurface.	\$1,700	Winnebago County	Resurface
Latham Road	Meridian Rd. to IL 2. Resurface.	\$1,800	Winnebago County	Resurface
Stewart Road	Meridian Rd. to Owen Center Rd. Resurface.	\$900	Winnebago County	Resurface
Montague Road	US 20 to Meridian Rd. Resurface and improve intersections.	\$1,000	Winnebago County	Resurface, Intersection Improvements
Montague Road	Meridian Rd. to Stephenson County Line. Resurface.	\$4,600	Winnebago County	Resurface
Telegraph Road	IL 70 to Pecatonica Rd. Resurface	\$3,200	Winnebago County	Resurface
Roscoe Road	IL 2 to IL 251. Resurface.	\$1,500	Winnebago County	Resurface
Yale Bridge Road	Anderson Rd. to Soputh Bluff Rd. Resurface.	\$5,000	Winnebago County	Resurface
Winnebago Road	US 20 to IL 70. Resurface.	\$1,500	Winnebago County	Resurface
Gleasant Road	Owen center Rd. to Roscoe Rd. Resurface.	\$1,700	Winnebago County	Resurface

County & Township Roads (con't)	Project Description	Project Cost (000)	Project Sponsor	Project Type
Edwardsville Road	Stephenson County Line to Meridian Rd. Resurface.	\$3,500	Winnebago County	Resurface
Cunningham Road	Pecatonica Rd. to Winnebago Rd. Resurface.	\$2,900	Winnebago County	Resurface
Condon Road	Kishwaukee Rd. to Baxter Rd. Resurface.	\$900	Winnebago County	Resurface
Perryville Road	Harrison Ave. to East State St. Reconstruct shoulders.	\$650	Winnebago County	Shoulders
Perryville Road	Over South Branch of Kishwaukee River. Rehabilitate bridge.	\$500	Winnebago County	Bridge Overlay
County Wide Concrete Pavement Patching	Grinding and concrete pavement patching at various locations within Winnebago County.	\$1,300	Winnebago County	Concrete Pavement & Joint Repair
Smith Road	Winnebago Rd. to Township line.	\$460	Burritt Township	Resurface
Christen Road	Cemetery Rd. to end.	\$235	Burritt Township	Resurface
Wempletown Road	Dickenson Rd. to telegraph Rd.	\$575	Burritt Township	Resurface
Blackhawk Road	20th St. to Perryville Rd.	\$320	Cherry Valley Township	Resurface
Goeke Road	IL 75 to Trask Bridge Rd.	\$32	Durand Township	Resurface
Hamborg Road	Belvidere Rd. to RR Bridge.	\$179	Harlem Township	Resurface
Atwood Road	Belvidere Rd. to Township line.	\$533	Harlem Township	Resurface
Township Seal Coating	10 locations within Township.	\$403	Harrison Township	Resurface
Township Resurfacing	8 locations within Township.	\$2,396	Harrison Township	Resurface
Township Seal Coating	13 locations within Township.	\$286	Laona Township	Resurface
Township Resurfacing	5 locations within Township.	\$1,374	Laona Township	Resurface
Township Resurfacing	9 locations within Township.	\$6,788	Owen Township	Resurface
Township Resurfacing	24 locations within Township.	\$2,239	Pecatonica Township	Resurface
Township Resurfacing	18 locations within Township.	\$8,665	Rockford Township	Resurface
Township Resurfacing	19 locations within Township.	\$1,385	Rockton Township	Resurface
Township Resurfacing	9 locations within Township.	\$491	Roscoe Township	Resurface

County & Township Roads (con't)	Project Description	Project Cost (000)	Project Sponsor	Project Type
Township Resurfacing	5 locations within Township.	\$765	Seward Township	Resurface
Township Resurfacing	2 locations within Township.	\$1,533	Shirland Township	Resurface
Township Resurfacing	4 locations within Township.	\$1,778	Winnebago Township	Resurface
Municipal Arterial Roadways				
Arterial Overlay Program	Overlay of Fairgrounds Road, Newburg Road, Pearl Street and 5th Avenue in the City of Belvidere. Total length = 3.10 miles.	\$883	City of Belvidere	Resurface, Pavement Markings
Main Street Bridge Overlay	The project will include the replacement of the deteriorated concrete wearing surface of the bridge.	\$585	City of Belvidere	Resurface
North State Street Concrete Repair	Fairgrounds Rd. to Highline Dr. Repair of highly deteriorated concrete pavement and joints. Length = 0.75 miles.	\$150	City of Belvidere	Concrete Pavement & Joint Repair
20th Street Resurfacing / Repairs (Broadway to Charles)	This is a main retail and residential arterial with an average daily traffic (ADT) of 10,200. The project consists of bituminous surface removal, partial C & G repair and replacement, and new bituminous surface.	\$350	City of Rockford	Resurface, Curb & Gutter
Alpine Road Rehabilitation (Guilford Rd. to Morsay Dr.)	This is a main retail and residential arterial with an average annual daily traffic (ADT) of 28,900. The project consists of bituminous surface removal, partial C & G repair and replacement, and new bituminous surface.	\$1,000	City of Rockford	Resurface, Curb & Gutter
Alpine Road Rehabilitation (Guilford Rd. to Morsay Dr.)	This is a main retail and residential arterial with an average annual daily traffic (ADT) of 28,900. The project consists of bituminous surface removal, partial C & G repair and replacement, and new bituminous surface.	\$1,000	City of Rockford	Resurface, Curb & Gutter
Broadway Resurfacing (9th St. to 20th St.)	This is a main retail and residential arterial to the south with an average daily traffic (ADT) of 14,500. The project consists of bituminous surface removal, partial C & G repair and replacement, and new bituminous surface.	\$800	City of Rockford	Resurface, Curb & Gutter
Newburg Road (Alpine Road to Mulford Road)	This project consists of concrete patching, surface removal, asphalt resurfacing and other related work. ADT: 25,600	\$2,000	City of Rockford	Resurface, Concrete Patching
Riverside Blvd Resurfacing (N. Main St. to Rock River)	A main retail / commercial arterial that needs resurfacing and some reconstruction. The project consists of bituminous surface removal, partial C & G repair and replacement, and new bituminous surface. ADT: 29,000-33,000	\$450	City of Rockford	Resurface, Curb & Gutter

**Municipal Arterial Roadways
(con't)**

	Project Description	Project Cost (000)	Project Sponsor	Project Type
Sandy Hollow Road Repairs (11th St. to Kishwaukee St.)	A main retail / commercial arterial that needs resurfacing and some reconstruction. The project consists of bituminous surface removal, partial C & G repair and replacement, and new bituminous surface. ADT: 14,000	\$1,050	City of Rockford	Resurface, Curb & Gutter
Commerial / Industrial Resurfacing, Repair & Reconstruction	Due to limited local funding many of the City's Commercial & Industrial streets have suffered delayed investment. Many of these streets are located within the City's several industrial parks. This project would allow intensive, focused investment into the core of the City's manufacturing districts.	\$4,770	City of Rockford	Resurface, Curb & Gutter
Center Street and Hartman Street	These are 2 streets forming an "L" in an industrial area. They need to be reconstructed with a pavement section suitable for industrial areas. Storm sewer must be added to solve the drainage problems along Center St where the street abuts other paved areas.	\$420	City of Rockford	Resurface, Curb & Gutter
Magnolia Street (15th Ave. to South End)	Magnolia is a one block dead end very densely populated with businesses. There have been repetitive requests throughout the years to improve the situation. ROW needs to be acquired for a cul-de-sac or through street to allow reasonable movement and the street needs to be totally reconstructed.	\$420	City of Rockford	Resurface, Curb & Gutter
Falund Street	Falund is a long dead end servicing ComEd's operations. With only one (but large) business, this road has been long-ignored. It needs to be reconstructed with a pavement section suitable for industrial areas.	\$336	City of Rockford	Resurface, Curb & Gutter
Mansfield St. and Hepburn St.	These are 2 streets in an industrial area off of Kishwaukee St, just south of Sandy Hollow. They need to be reconstructed with a pavement section suitable for industrial areas. Some combination of ditches and storm sewer are necessary to alleviate drainage problems.	\$492	City of Rockford	Resurface, Curb & Gutter
McFarland Road	Riverside Blvd. to Harlem Rd.	\$950	City of Loves Park	Widen & Resurface
Miller Street	Rood to Shirland	\$146	City of South Beloit	Resurface
Shaw Street	Liston to Oakland	\$28	City of South Beloit	Resurface
Perry Street	Hayes to Blackhawk	\$67	City of South Beloit	Resurface

Municipal Arterial Roadways
(con't)

	Project Description	Project Cost (000)	Project Sponsor	Project Type
Liston Street	Hayes to Blackhawk	\$64	City of South Beloit	Resurface
Wheeler Street	Lathrop to Gardner	\$74	City of South Beloit	Resurface
Lathrop Street	Thompson to Eastern	\$24	City of South Beloit	Resurface
Northwestern Street	Oakgrove to Blackhawk	\$126	City of South Beloit	Resurface
Elmwood Street	Donor to Blackhawk	\$43	City of South Beloit	Resurface
Village Wide Resurfacing Program	Street and bike path resurfacing.	\$500	Village of Durand	Resurface
Village Wide Resurfacing Program	Street resurfacing in Village.	\$1,332	Village of Machesney Park	Resurface
Village Wide Resurfacing Program	Street resurfacing of flood damaged streets.	\$700	Village of Machesney Park	Resurface
Ryberg Road	Lorraine Dr. to Baxter Rd.	\$399	Village of New Milford	Resurface
Rorary Road	IL 251 to Village limits.	\$185	Village of New Milford	Resurface
Main Street	Rock River Bridge to Center St.	\$571	Village of Rockton	Widen & Resurface
Asplund Drive	Rockton Rd. to Byrnes Dr.	\$371	Village of Rockton	Widen & Resurface
Union Street	IL 75 to IL 2	\$511	Village of Rockton	Resurface
Village Wide Resurfacing Program	9 locations within the Village.	\$878	Village of Roscoe	Resurface
Westfield Road	McNair Rd. to Village limits.	\$250	Village of Winnebago	Resurface
Slack Subdivision	Subdivision streets.	\$175	Village of Winnebago	Resurface

Total Highway Maintenance

\$119,877

PUBLIC BUILDINGS AND SCHOOLS

Public Buildings and Schools

Investment in local buildings and schools that serve the various communities of the Rockford, IL region is crucial to long term community health and may provide the highest return on investment at the local level. Investment in public buildings and schools is often deferred because annual budgets do not allow for strategic investment. Often projects in this category are decided by referendum, often times defeated because of the negative sentiment of higher property and sales taxes.

The public buildings and schools section of this submittal totals \$208,681,000. The projected impact to the construction industry is projected to be 1043 workers full time for two years (one worker for one year for every \$100,000 in building construction investment).

The public buildings and schools category is broken down as follows:

Public Buildings	\$119,030,000
Schools	<u>\$ 89,651,000</u>
Total Buildings and School Program	\$208,681,000

Public Buildings & Schools

Public Buildings	Project Description	Project Cost (000)	Project Sponsor	Project Type
Education, Research and Development Facility (ERD)	Infrastructure and sustainability design features for this new education facility at the Chicago Rockford International Airport campus.	\$15,000	Chicago Rockford International Airport (RFD)	Public Building
RFD Aircraft Rescue and Firefighting Facility / Fire Station No. 7	Joint facility serving a City of Rockford firefighting unit as well as an airport firefighting specialist.	\$1,000	Chicago Rockford International Airport (RFD)	Public Building
Public Safety Building and E911 Center Expansion	Building additions for public safety in Boone County.	\$13,500	Boone County	Public Building
Courthouse Remodeling Project	Remodeling of Boone County Courthouse for court administration and operations.	\$5,000	Boone County	Public Building
Boone County Sheriff Vehicle Storage Building	Building addition for vehicle storage.	\$500	Boone County	Public Building
Boone County Animal Control Building	New facility.	\$350	Boone County	Public Building
Maple Crest Care Center Fire Suppression System	Fire suppression and sprinkler system. Reimbursement for expenses.	\$280	Boone County	Public Building
Boone County Senior Supportive Living Center	Public private partnership with the Kensington Group for new senior center.	\$20,000	Boone County	Public Building
Loves Park Fire Station	New Fire Station Facility	\$4,000	City of Loves Park	Public Building
MetroCentre Service Entrance & Loading Docks	Loading docks, street resurfacing, curbs and service entrance.	\$1,200	MetroCentre, City of Rockford	Public Building
MetroCentre Exterior & Window Rehabilitation	Replacement of siding and windows	\$3,575	MetroCentre, City of Rockford	Public Building
MetroCentre Interior and Mechanical System Remodel	Rehabilitation or replacement of escalator, chiller/boiler, green alternatives, curtain, sound system and locker room.	\$4,275	MetroCentre, City of Rockford	Public Building
Demolition of Barber Coleman Industrial Buildings	Demolition of City-owned industrial complex to allow for future economic development projects within the site.	\$300	City of Rockford	Public Building
Nicholas Conservatory	New construction of the conservatory for the Rockford Park District. Leverages funds raised privately.	\$2,000	Rockford Park District	Public Building
Service Garage Facility	New equipment service garage building for City of Rockford.	\$800	City of Rockford	Public Building
Fuel Pump Station Complex	New fuel pump stations at City Yards in Rockford.	\$600	City of Rockford	Public Building
Building #8 Demolition	Demolition of Building #8 at Rockford City Yards.	\$400	City of Rockford	Public Building
Building #10 Demolition	Demolition of Building #10 at Rockford City Yards.	\$300	City of Rockford	Public Building
Building #6 Demolition	Demolition of Building #6 at Rockford City Yards.	\$300	City of Rockford	Public Building
Sign & Parking Shop	New sign & parking shop at Rockford City Yards.	\$200	City of Rockford	Public Building

Public Buildings & Schools

Public Buildings	Project Description	Project Cost (000)	Project Sponsor	Project Type
Administration Building Expansion	Expansion of the Public Works Administration building at City Yards.	\$700	City of Rockford	Public Building
Equipment Storage Building	Demolition of existing building and replacement with modern storage building for equipment at City Yards.	\$600	City of Rockford	Public Building
Salt Storage Facility	New salt storage facility at City yards.	\$100	City of Rockford	Public Building
Sweeper Dump / Wash Bay Station	New facility to comply with EPA mandate.	\$300	City of Rockford	Public Building
Evidence Storage Building	New facility to store vehicles impounded by Police as evidence in on going investigations.	\$200	City of Rockford	Public Building
Public Works / Street Department Building	New facility for Public Works maintenance.	\$1,200	City of South Beloit	Public Building
Public Works Facility	New facility for Public Works maintenance, salt storage and vehicle maintenance.	\$2,500	Village of Cherry Valley	Public Building
Village Hall	Expansion of Village Hall	\$8,300	Village of Machesney Park	Public Building
Civic Center	New Municipal / Civic Center.	\$10,100	Village of Machesney Park	Public Building
Police Garage	New police garage / station.	\$1,300	Village of Pecatonica	Public Building
Village Hall Addition	Expand and modernize existing building.	\$3,500	Village of Roscoe	Public Building
Township Building	Garage expansion for equipment storage.	\$90	Cherry Valley Township	Public Building
Township Building	Garage expansion for equipment storage.	\$750	Owen Township	Public Building
Township Building	New floor and surface.	\$42	Shirland Township	Public Building
Township Building	Permanent garage and salt shed.	\$416	Winnebago Township	Public Building
New Police Substation	New police substation along IL 173 near I-90	\$2,250	Village of Machesney Park	Public Building
US Post Office	New US Post Office for Zip Code 61115	\$2,500	Village of Machesney Park	Public Building
Collier Gardens Renovation	Complete renovation of the Collier Gardens facility for the Winnebago County Housing Authority	\$10,000	Winnebago County	Public Building
Winnebago County Housing Authority Safety Projects	Emergency lighting, fire door replacement and security doors for four County Housing Authority facilities	\$127	Winnebago County	Public Building
Winnebago County Housing Authority Maintenance Projects	Renovations, lighting, parking lots, sidewalks and furnishings for three Winnebago County Housing Authority facilities	\$475	Winnebago County	Public Building

Public Buildings & Schools

Schools	Project Description	Project Cost (000)	Project Sponsor	Project Type
Replace Building	New pole barn with 3 doors.	\$40	Durand School District	School Building
Operations Building	Storage facility and general operations for district maintenance equipment.	\$50	Harlem School District	School Building
Hoffman Campus	General building renovation and upgrade.	\$2,000	Harlem School District	School Building
Fiber Optic Connection	Connect current school buildings to fiber optic ring.	\$200	Harlem School District	School Facilities
Honenegah School Projects	Upgrade of various facilities and roads for the school district.	\$1,990	Honenegah School District	School Facilities
Honenegah School Dome	Remove and replace dome structure with permanent structure.	\$3,500	Honenegah School District	School Building
Burr Oak Road Property	New 75,000 SF school for grades 4-5.	\$16,575	Kinnikinnick School District	School Building
Kinnikinnick School Projects	Upgrade of various facilities and roads for the school district.	\$3,989	Kinnikinnick School District	School Facilities
Pecatonica Middle School	New Bus Garage	\$400	Pecatonica School District	School Building
Pecatonica Middle School	Upgrade of various facilities and sidewalks for the school district.	\$80	Pecatonica School District	School Facilities
Fiber Optic Connection	Connect current school buildings to fiber optic ring.	\$5,000	Rockford School District	School Facilities
Rockford School Upgrades	Roofing, windows, electrical, HVAC, paving, playground, lockers, flooring and door lock-down hardware for district schools.	\$44,067	Rockford School District	School Building
Rockton School Upgrades	Emergency evacuation path, disabled playground equipment and fitness recreation area.	\$170	Rockton School District	School Facilities
Stephen Mack School	New athletic / maintenance storage building.	\$80	Rockton School District	School Building
Shirland School Upgrades	Parking lot and sidewalks.	\$160	Shirland School District	School Facilities
Shirland Middle School	New bus storage facility.	\$50	Shirland School District	School Building
South Beloit Junior High	Roofing project.	\$242	South Beloit School District	School Building
South Beloit Elementary School Projects	Bus loading facility and school zone safety equipment.	\$46	South Beloit School District	School Facilities

Public Buildings & Schools

Schools	Project Description	Project Cost (000)	Project Sponsor	Project Type
Winnebago School District Projects	Streets, parking area, HVAC, walking path.	\$967	Winnebago School District	School Facilities
Winnebago School District Projects	Transportation center, classrooms, library, auxiliary gym, athletic storage facility, shelters, security doors.	\$10,045	Winnebago School District	School Building

Public Buildings and Schools Total

\$208,681

REGIONAL FACILITIES

Regional Facilities

Investment in facilities of regional significance can complement the investment strategies detailed earlier in the economic stimulus package. Many of the projects in this category leverage private investment. Most of the projects in this category lead directly to economic development as the key components of the land development process. The Rockford, IL region is well positioned to take advantage of regional leadership related to urban growth management that targets these strategic investments into brownfield sites, redevelopment sites and planned growth areas such as the Chicago Rockford International Airport, the Rockford Global Trade Park, and the Belvidere AG-Tech Park. Projects like Freedom Field and the ERD facility are leading the way to the development of alternative energy sources, the manufacture of alternative energy components and products, and the inclusion of sustainability features in the facility design.

The total regional facility package in this submittal totals \$179,259,000. The projected impact to the construction industry is projected to be 896 workers full time for two years (one worker for every \$100,000 in facility investment).

The regional facilities category is broken down as follows:

Flood Control	\$ 50,057,000
Fiber Optic Ring / Broadband	\$ 7,150,000
Wastewater / Sanitary Sewer	\$ 45,625,000
Recreation Facilities	\$ 27,877,000
Water Systems	\$ 38,500,000
Public Safety	<u>\$ 10,050,000</u>
Total Regional Facilities Program	\$179,259,000

Regional Facilities

Flood Control	Project Description	Project Cost (000)	Project Sponsor	Project Type
Alpine Dam Repairs Phase 1	Concrete spillway repairs and retaining walls.	\$2,500	City of Rockford	Dam Repair
Alpine Dam Repairs Phase 2	Dam modernization.	\$2,000	City of Rockford	Dam Repair
Harmon Park Flood Control System	Retention pond and flood control facilities.	\$3,750	City of Rockford	Flood Control
Southwest Rockford Flood Control	New drainage facilities and flood control measures.	\$2,650	City of Rockford	Flood Control
Keith Creek / Churchill Park Flood Control	New drainage facilities and flood control measures.	\$5,150	City of Rockford	Flood Control
Keith Creek / Alpine Hills Flood Control Structure	New drainage facilities and flood control measures.	\$15,950	City of Rockford	Flood Control
Creek Cleanout Program	Removal of trees from various drainage facilities.	\$1,000	City of Rockford	Flood Control
OSF Hospital Flood Control	New drainage facilities and flood control measures.	\$4,000	City of Rockford	Flood Control
Bus US 20 & Trainer Road Flood Control	Retention pond and flood control facilities.	\$9,000	City of Rockford	Flood Control
Bus US 20 & Trainer Road Flood Control	Retention pond and flood control facilities.	\$2,000	City of Rockford	Flood Control
Storm Basin D Improvements	Installation of 1250 feet of truck storm sewer.	\$357	City of Belvidere	Flood Control
Storm Water Management Project	Dredge lower regional detention pond, make spillway modifications, clean and realign drainageways.	\$1,000	Village of Cherry Valley	Flood Control
Village Stormwater Management	Enhance flow of water runoff in Village.	\$700	Village of Durand	Flood Control
Fiber Optic Ring / Broadband				
Regional Fiber Ring	Extension of the Northern Illinois Technology Triangle fiber along the Strategic Regional Arterial System, extension to the Chicago Rockford International Airport, connection at the new tollway interchanges, and connection to schools and other public buildings.	\$7,150	All Municipal Governments, County Governments and the Airport	Fiber Optic Ring and Broadband Development
Wastewater / Sanitary Sewer				
Kent Creek Trunk Extension	Northwest Rockford trunk sewer extension to Pierce Chemical.	\$3,000	Rock River Water Reclamation District	New Sanitary Sewer
Fuller Creek Sewer Extension	Southwest Rockford trunk sewer extension.	\$5,500	Rock River Water Reclamation District	New Sanitary Sewer
District Wide Sewer Repair	Lining of various sewer pipes with a cast in place liner.	\$15,000	Rock River Water Reclamation District	Sanitary Sewer Repair
East Belvidere Trunk Sewer and Lift Station	Installation of 18,000 feet of trunk sanitary sewer and a regional lift station.	\$3,200	City of Belvidere	New Sanitary Sewer

Regional Facilities

Wastewater / Sanitary Sewer	Project Description	Project Cost (000)	Project Sponsor	Project Type
Columbia Avenue & Aspen Court Trunk Sewer Upgrade	Upgrade of 2,330 feet of trunk sanitary sewer.	\$1,340	City of Belvidere	New Sanitary Sewer
Blower and Aeration System Improvements	Replacement of blower and aeration equipment.	\$2,800	City of Belvidere	Wastewater Treatment
Tertiary Filtration Improvements	Replacement of filtration equipment.	\$2,300	City of Belvidere	Wastewater Treatment
Sanitary Sewer Rehabilitation Program	Repairs to various sewer lines.	\$4,000	City of South Beloit	Sanitary Sewer Repair
Sanitary Sewer Rehabilitation Program	Repairs to various clat tile sewer lines.	\$200	Village of Durand	Sanitary Sewer Repair
River Street Lift Station	Upgrade station capacity.	\$285	Village of Rockton	Wastewater Treatment
Wastewater Treatment Plant	Expand existing facility.	\$8,000	Village of Winnebago	Wastewater Treatment
Recreation				
Rock River Whitewater Development	Whitewater facility beneath the Fordham Dam which could serve as an event site for the 2016 Olympics.	\$6,700	City of Rockford	New Recreation Facility
Downtown Rockford Riverwalk	Completion of missing gap in the Grand Illinois Trail with sea wall, new multi-use path and links to other path systems.	\$2,650	City of Rockford	New Recreation Facility
Pecatonica Prairie Path	Construction of a new multi-use path from Rockford to Freeport.	\$10,000	Winnebago County	New Recreation Facility
Boat Access Development Project	Construction of a new boat access development on the Rock River.	\$170	City of South Beloit	New Recreation Facility
Riverside Park Bike Path	Construction of a new mulit-use path and bridge.	\$447	City of South Beloit	New Recreation Facility
Village Bike Path	Construction of a new mulit-use path to serve commercial areas.	\$500	Village of Durand	New Recreation Facility
Rock River / Shore Drive	New boat ramp, park complex, emergency vehicle storage.	\$935	Village of Machesney Park	New Recreation Facility
Rockton / Roscoe Recreation Path	Construction of a new multi-use path from Rockton to Roscoe	\$750	Village of Rockton	New Recreation Facility
Chicory Ridge Recreation Path	Chicory Ridge Subdivision to Riverside Park	\$2,500	Village of Roscoe	New Recreation Facility
Forest Preserve Upgrades	Upgrades to Macktown, Kieselburg, Pecatonica Wetlands, Ledges, Honenegah	\$1,705	Winnebago County Forest Preserve	Modernize Recreation Facilities

Regional Facilities

		Project Cost (000)	Project Sponsor	Project Type
Recreation				
Mill Road Path	Construction of new multi-use path.	\$1,500	Cherry Valley Township	New Recreation Facility
Stone Bridge Nature Trail	Resurface of existing path.	\$20	Roscoe Township	Modernize Recreation Facilities
Water System				
Water Main Replacement	City-wide program to replace aging water main to historic neighborhoods and commercial centers.	\$8,500	City of Rockford	Water System
Dawson Water Main Phase II	Replace 4000 feet of water main.	\$3,800	City of Rockford	Water System
Harrison Avenue Water Main Phase II	Replace 7500 feet of water main.	\$2,400	City of Rockford	Water System
Paulson Road Expansion	New 18,000 feet of water main.	\$4,100	City of Rockford	Water System
East State & Perryville Water Main	Replace 10,000 feet of water main.	\$3,500	City of Rockford	Water System
Well 46	Drill and construct a new well.	\$2,600	City of Rockford	Water System
Well 45 Treatment	Radium treatment facilities for well 45.	\$2,600	City of Rockford	Water System
Water System Building	New system building for Rockford's water system	\$2,500	City of Rockford	Water System
Orth Road Watermain	Interstate Blvd. To Olson Rd.	\$5,000	City of Loves Park	Water System
Village NE Water Tower	Construct new .75 MG water tower in NE part of the Village.	\$1,500	Village of Cherry Valley	Water System
Village Water Main Improvements	Replace old and undersized water mains in Village.	\$500	Village of Durand	Water System
Village Well and Wellhouse	Construction of new well and wellhouse for Village.	\$500	Village of Durand	Water System
Village Water Main Improvements	Replace old and undersized water mains in Village.	\$1,000	Village of Winnebago	Water System
Public Safety				
Prairie Shield	7 County Association to Improve First Responder Communications with Voice, Data and Video Broadband Applications	\$10,000	Boone County, Winnebago County and 5 other regional Counties	Public Safety
Tornado Sirens	Additional tornado sirens for Boone County early warning system.	\$50	Boone County	Public Safety
Total Regional Facilities		\$179,259		

SAFETY

Safety

The safety section of this economic stimulus submittal contains projects that direct investment to locations that have a high crash rate, a high rate of personal injury or fatality, or locations that have been identified as safety concerns. The safety program is small by comparison to the other categories in the submittal but remains a high priority for the region. Almost all projects in this category are related to signalized intersections and problems with motorized traffic or bicycle / pedestrian activity.

The safety section of this submittal totals \$12,025,000.

Safety

Location	Project Description	Project Cost (000)	Project Sponsor	Project Type
Bus US 20 (East State Street) & Bell School Road Intersection	The intersection is 0.25 miles west of the I-90/39 interchange with Bus US 20 and operates at an inadequate level of service. The intersection has a high accident rate and has experienced two pedestrian fatalities. Joint project with Illinois DOT, City of Rockford and Winnebago County.	\$2,650	Illinois DOT, City of Rockford, Winnebago County	Intersection Modernization and Upgraded Signals
Bus US 20 Pedestrian Bridge at I-90	The City's Hotel / Motel Campus is located at the junction of US Business 20 and I-90. The development of a pedestrian bridge will link the Campus more effectively and provide pedestrian movements that will not bring patrons of the Campus area in conflict with traffic.	\$2,125	City of Rockford, Illinois DOT, Illinois Toll Highway Authority	Grade Separated Pedestrian and Bicycle Facility
Rural Street - Aldeen Park Entrance	The existing park entrance on North Alpine Road experiences a high accident rate. Project would extend Rural Street to create a new signalized entrance to this regional Park District facility	\$750	City of Rockford	New Signalized Park Entrance
County Wide Guardrail Program	Upgrade guardrail within Winnebago County at safety identified locations.	\$2,000	Winnebago County	Upgrade Guardrail
Ralston Road & Bonnet Drive Intersection	Add turn lanes and install permanent signals.	\$600	Winnebago County	New Traffic Signals, Turn Lanes
County Wide Pavement Marking Program	Install thermoplastic semi-permanent pavement markings within Winnebago County.	\$200	Winnebago County	Pavement Markings
County Wide Traffic Signal Program	Install permanent traffic signals at various locations within Winnebago County.	\$1,000	Winnebago County	New Traffic Signals
County Wide Traffic Signal Interconnection Program	Perryville Rd. from East State St. to Riverside Blvd. Interconnect signals.	\$300	Winnebago County	Interconnect Traffic Signals
Baxter Road / IL 251 Intersection	Intersection improvement at southern gateway to the Chicago Rockford International Airport.	\$1,000	Winnebago County	Intersection Modernization
Telegraph Road at Pecatonica	Horizontal curve relocation.	\$1,100	Winnebago County	Alignment & Safety
Village Wide Guardrail Program	Upgrade guardrail within the Village at safety identified locations.	\$50	Village of Roscoe	Upgrade Guardrail
Elida Street & Landmark Drive	Install new traffic signal.	\$200	Village of Winnebago	New Traffic Signals
Township Guardrail Program	Upgrade and new installation of guardrail at various locations.	\$10	Cherry Valley Township	Upgrade Guardrail
Township Sign Machine	New machine for sign fabrication to comply with Federal sign standards.	\$25	Cherry Valley Township	Upgrade Guardrail
Township Guardrail Program	Upgrade and new installation of guardrail at various locations.	\$15	Harlem Township	Upgrade Guardrail

Total Safety Program

\$12,025

STIMULUS SUMMARY

Economic Stimulus Summary

Tier 1 (Equal Priority)

Passenger Rail Phase 1	\$111,044,000
Passenger Rail Phase 2*	\$ 70,347,000
Highway Construction - State & Federal Highways	\$262,491,000
Highway Construction – County & Township Roads	\$135,400,000
Highway Construction – Municipal Arterial Roads	<u>\$104,046,000</u>

Total Tier 1* \$612,981,000

Tier 2 (Equal Priority)

Highway Maintenance – State & Federal Roads	\$ 18,500,000
Highway Maintenance – County & Township Roads	\$ 79,277,000
Highway Maintenance – Municipal Arterial Roads	\$ 22,100,000
Public Buildings	\$119,030,000
Schools	<u>\$ 89,651,000</u>
Flood Control	<u>\$ 50,057,000</u>
Fiber Optic / Broadband	<u>\$ 7,150,000</u>
Wastewater / Sanitary Sewer	<u>\$ 45,625,000</u>
Recreation Facilities	<u>\$ 27,877,000</u>
Water Systems	<u>\$ 38,500,000</u>
Public Safety	<u>\$ 10,050,000</u>
Intersection Safety	<u>\$ 12,025,000</u>

Total Tier 2 \$519,842,000

Total Economic Stimulus Submittal* \$1,132,823,000

* Phase 2 Passenger Rail not included in totals