

**Rockford Metropolitan Agency for Planning (RMAP)  
Metropolitan Planning Organization  
313 North Main Street, Rockford, IL 61101**

**FY 2017 – UNIFIED WORK PROGRAM**

**(July 1, 2016 to June 30, 2017)**

**May 19<sup>th</sup>, 2016 – Final Version**

**Adopted: May 26<sup>th</sup>, 2016**

THIS REPORT WAS PREPARED IN COOPERATION WITH THE FOLLOWING AGENCIES:

U.S. Department of Transportation  
Federal Highway Administration  
Federal Transit Administration  
Illinois Department of Transportation

THE CONTENTS, VIEWS, POLICIES AND CONCLUSION EXPRESSED IN THIS REPORT ARE NOT NECESSARILY THOSE OF THE ABOVE AGENCIES.

**RMAP – POLICY COMMITTEE**

Mayor Mike Chamberlain, City of Belvidere  
Board Chairman Scott H. Christiansen, Winnebago County  
Board Chairman Bob Walberg, Boone County  
Mayor Darryl F. Lindberg, City of Loves Park  
Mayor Jerry Bolin, Village of Machesney Park  
Mayor Lawrence J. Morrissey, City of Rockford  
Gary L. Marzorati, Board Chairman, Rockford Mass Transit District  
Deputy Director Paul Loete, IDOT, Region 2

## FY 2017 UNIFIED WORK PROGRAM – TABLE OF CONTENTS

<b>PART 1 – INTRODUCTION</b>	5
Chart 1 – Acronyms and abbreviations	6
<b>PART 2 – OVERALL UWP GOALS</b>	9
Chart 2 – MPO Planning Goals	9
Planning Emphasis Areas	9
Chart 3 – RMAP MPO Directives	12
<b>PART 3 – RMAP &amp; PARTICIPANTS</b>	12
Chart 4 – Technical Planning Participants	13
Chart 5 – RMAP Organizational Chart	14
<b>PART 4 – TRANSPORTATION PLANNING FUNDING SOURCES</b>	15
Chart 6 – Funding Sources for Planning	15
<b>PART 5 – FUNDING AVAILABLE FOR FY 2017 &amp; WORK ELEMENT BUDGET</b>	15
Chart 7 – Funds for FY 2017	15
Chart 8 – Budget of Planning Work Elements / Activities for FY 2017	16
<b>PART 6 – FUNDING OF RMAP</b>	16
Figure 1 – RMAP FY 2016 Funding Sources: Federal, State & Local	17
Chart 9 – RMAP Planning Process: Funding Allocation Summary Budget for FY 2017	18
<b>PART 7 – PLANNING PRIORITY ACTIVITIES FOR FY 2017: by UWP WORK ELEMENTS</b>	19
Element 1 – Unified work program development (UWP)	19
Element 2 – Technical Assistance on special studies and other planning efforts (TA)	20
Element 3 – Administration (AD)	23
Element 4 – Public Participation (PP)	24
Element 5 – Transportation data & forecasting (TDF)	25
Element 6 – Land Use Planning, Data Collection & Forecasting (LUPDCF)	25
Element 7 – Transportation Improvement Program (TIP)	28
Element 8 – Congestion & Systems Management (CSM)	29
Element 9 – Long Range Transportation Plan (LRTP)	31

<b>PART 8 – SUMMARY OF FY 2017 WORK ELEMENT ACTIVITIES</b>	<b>33</b>
<b>PART 9 – SPECIAL CONSIDERATIONS IN ADMINISTRATION &amp; PLANNING</b>	<b>35</b>
A. Intergovernmental Agreement	35
B. Audits	35
C. Cost Allocation Plan	35
D. Funding allocation for jointly-funded work tasks	35
E. Computation of total loaded hourly wage rates	36
F. Submittal of reimbursement requests	36
G. Minority & environmental justice	37
<b>PART 10 – PUBLIC COMMENTS</b>	<b>39</b>
<b>PART 11 – FUNDS &amp; BUDGET for FY 2017</b>	
Figure 2 – FY 2016 RMAP Funding Sources	40
Chart 10 – Intergovernmental Agreement IDOT/RMAP: Federal, State & Local Funds	41
Chart 11 – Federal, State & Local Suballocations by Work Element; By Type of Funds and Estimated Work Hours	42
Chart 12 – Object Class Budget	43
Figure 3 – FY 2016 Funding Sources and Amounts: Submitted to IDOT	44
Figure 4 – FY 2016 Funding Sources and Amounts: Still outstanding from IDOT	44
Chart 13 – RMAP FY 2016 Funding Sources and Amounts – Submitted to IDOT	45
Chart 14 – RMAP FY 2016 Funding Sources and Amounts – Still Outstanding from IDOT	45
<b>RMAP RESOLUTION 2016-6: ADOPTION OF THE FY 2017 UNIFIED WORK PROGRAM</b>	<b>46</b>
<b>RMAP METROPOLITAN TRANSPORTATION PLANNING PROCESS CERTIFICATION</b>	<b>48</b>

## **RMAP TECHNICAL COMMITTEE / VOTING MEMBERS**

(20 Votes)

### **AGENCY**

1. IDOT District #2
2. Winnebago County Highway Department
3. City of Rockford – Public Works Department
4. City of Loves Park – Public Works
5. Village of Machesney Park
6. Chicago/Rockford International Airport
7. Rockford Mass Transit District
8. City of Loves Park – Community Development
9. City of Rockford – Community Development Department
10. Winnebago County Planning & Economic Development Department
11. Boone County Highway
12. City of Belvidere Public Works
13. Village of Roscoe
14. Village of Winnebago
15. Rock River Reclamation District
16. Winnebago County Forest Preserve District
17. Boone County Conservation District
18. Rockford Park District
19. Winnebago County Soil & Water Conservation District
20. Village of Poplar Grove

### **REPRESENTATIVE**

Dan Long  
Joe Vanderwerff / Wayne Vlk  
Jeremy Carter / Tim Hinkens / Tyler Nelson  
Dan Jacobson / Steve Thompson  
Tim Savage / Carrie Houston  
David Lindberg  
Jim Johnson  
Nathan Bruck  
Scott Capovilla  
Chris Dornbush  
Rich Lundin  
Brent Anderson  
Zachary Gill  
Ben Bushman  
Dana Carroll / Mike Weber  
Tom Hartley / Jamie Johannsen  
Dane Kane / Mick Johnston  
Tim Bragg  
Dennis Anthony / Jessica Cocroft  
Diana Dykstra

### **RMAP Staff**

Michael P. Dunn, Jr. Executive Director  
Gary W. McIntyre, Metro Program Manager  
Jon Paul Diipla, AICP, Metro Program Manager  
Christina “Chris” Washington, Office Manager  
Colin R. Belle, Metropolitan Planner  
Michael R. Hren, Metropolitan Planner  
Terrance Hall, Metropolitan Planner  
Sydney Turner, Metropolitan Planner

**THE FY 2017 UNIFIED WORK PROGRAM  
FOR TRANSPORTATION PLANNING  
FOR THE ROCKFORD METROPOLITAN PLANNING AREA**

**PART 1 – INTRODUCTION**

This Unified Work Program (UWP) identifies the funds and activities to be conducted by RMAP during the period from July 1, 2016 through June 30, 2017, Fiscal Year 2017. Opportunities for public comment have been afforded at RMAP Committee meetings from January 2016 through May 2016. Development of the RMAP FY 2018 UWP will begin in November 2016. Suggestions regarding RMAP planning work may be directed to the RMAP staff or to the RMAP Technical Committee or Policy Committee at their respective monthly meetings. Contact RMAP staff or view the RMAP web site for exact meeting dates, times and locations at: <http://www.rmapil.org>

This report and attached tables comprise the UWP for the Rockford, Illinois Metropolitan Planning Organization, otherwise known as the Rockford MPO or the Rockford Metropolitan Agency for Planning (RMAP) for FY 2017. Additional copies of this UWP may be obtained at the office of RMAP, 313 North Main Street, Rockford, IL, 61101 (Telephone: 779-348-7627) or from the RMAP web site shown above.

Funding for the RMAP MPO comes from four funding sources, which are:

1. Federal Highway Administration – PL,
2. Federal Transit Administration – 5305(d),
3. State of Illinois, Illinois Department of Transportation (IDOT) – State Planning Funds (SPF) and
4. Local Contributions from:
  - 4.1. City of Rockford,
  - 4.2. Winnebago County,
  - 4.3. City of Loves Park,
  - 4.4. Village of Machesney Park,
  - 4.5. City of Belvidere
  - 4.6. Boone County.

Through the RMAP adopted Cooperative Agreement (CA) and the annual IDOT Intergovernmental Agreement (IGA), these are the funds that provide the financial operational assistance so that RMAP can perform the required transportation planning work, prepare the technical documents and provide specialized assistance as required by Federal law and regulations and the IDOT/RMAP IGA. By the nature of these adopted and executed agreements, these four funding sources restrict the work activities of the RMAP MPO and staff to the specific tasks that are described in this annual UWP. Any work activities done “outside” of the framework of this document and would be deemed ineligible and disqualified for use of the FHWA-PL, FTA-5305(d), IDOT-SPF and Local Contributions funding sources.

The earliest this proposed work program will be considered for adoption by the Policy Committee will be at their May 26, 2016 meeting. Public comments will be accepted any time before or after adoption and most aspects of this proposed program are amendable for reasonable cause. However, the public is encouraged to provide input as early as possible.

Written comments may be addressed to the RMAP staff at the above address. Oral comments will be accepted at any RMAP Mobility Subcommittee, Technical or Policy Committee meetings or by phone to the RMAP staff. Comments can also be sent electronically using the RMAP online comment card @: <http://www.rmapil.org/rmap-home/>. Please contact the RMAP staff by phone or for exact meeting dates, times and locations.

First time readers of RMAP Unified Work Program (UWP) and others less familiar with transportation planning terminology may wish to make note of Chart 1. RMAP regrets the need to use abbreviations and acronyms but without them we suspect the UWP would be even harder to read and it undoubtedly would be considerably longer.

### CHART 1 – ACRONYMS AND ABBREVIATIONS

ADA	Americans with Disabilities Act
3-C	Continuing, Cooperative and Comprehensive Transportation Planning Process
CM	Congestion Management
DBE	Disadvantaged Business Enterprise
EPA	Environmental Protection Agency
FAST Act	Fixing America's Surface Transportation Act
FHWA	Federal Highway Administration
FTA	Federal Transit Administration
GIS	Geographic Information system
HSTP	Coordinated Public Transit – Human Services Transportation Plan
HUD	Housing & Urban Development
IDOT	Illinois Department of Transportation
ISTEA	Intermodal Surface Transportation Efficiency Act
L RTP	Long Range Transportation Plan
MAP - 21	Moving Ahead for Progress in the 21st Century Act
MPA	Rockford Metropolitan Planning Area
MPO	Metropolitan Planning Organization
PEA	Planning Emphasis Areas
PL – Funds	Planning Funds Provided through the FHWA
PPP	Public Participation Plan
PTMS	Public Transit Management System
RATS	Rockford Area Transportation Study (the previous name of RMAP MPO)
REMI	Regional Economic Models, Inc.

RMAP	Rockford Metropolitan Agency for Planning (the current name of the MPO for the Rockford Urban Area)
RGIS	Regional Geographic Information Systems
RPC	Regional Planning Council
SHSP	Strategic Highway Safety Plan
SPR	State Planning and Research Planning Funds (Federal)
SAFETEA-LU	Safe Accountable Flexible & Efficient Transportation Equity Act: A Legacy of Users
TDM	Transportation Demand Model
TEA – 21	Transportation Equity Act for the 21 <sup>st</sup> Century
TIP	Transportation Improvement Program
TLHR	Total Loaded Hourly Pay Rate
TSM	Transportation System Management
TMA	Transportation Management Area (an urbanized area with a population of 200,000 persons or more)
UWP	Unified Work Program
Win GIS	Winnebago County Geographic Information System
5305(d) – funds	Planning funds provided through the FTA
5307 – funds	FTA – Urban Area formula funds
5309 – funds	FTA – Capital discretionary funds for Bus & Bus related facilities and new starts
5310 – funds	FTA – Enhanced Mobility of Seniors & Individuals with Disabilities
5339 – funds	FTA – Bus and Bus Facilities Program

On December 4, 2015, President Obama signed into law the Fixing America's Surface Transportation Act, or "FAST Act" - the first Federal law in over ten years to provide long-term funding certainty for surface transportation. The FAST Act authorizes \$305 billion nationwide over fiscal years 2016 through 2020 for the Department's highway, highway and motor vehicle safety, public transportation, motor carrier safety, hazardous materials safety, rail, and research, technology and statistics programs. The FAST Act represents the first long-term comprehensive surface transportation legislation since SAFETEA-LU (2005) and is a milestone for the U.S. economy – it provides needed funds and, more importantly, it transforms the policy and programmatic framework for investments to guide the growth and development of the country's vital transportation infrastructure.

In the FAST Act, the metropolitan and statewide transportation planning processes are continued and enhanced to incorporate performance goals, measures, and targets into the process of identifying needed transportation improvements and project selection. Public participation remains a hallmark of the transportation planning process. Requirements for a long-range transportation plan and a short-term transportation improvement plan (TIP) continue, with the long-range transportation plan to incorporate performance plans required by the Act for specific programs. The long-range plan must describe the performance measures and targets used in assessing system performance and progress in achieving the performance targets. The TIP must also be developed to make progress toward established performance targets and include a description of the anticipated achievements. In the statewide and nonmetropolitan planning process, selection of projects in nonmetropolitan areas, except projects on the NHS or funded with funds remaining from the discontinued Highway Bridge Program, must be made in cooperation with affected nonmetropolitan officials or any regional transportation planning organization.

FAST Act also continues that MPOs, as a condition for receipt of Federal surface transportation funds, have a continuing, cooperative and comprehensive (3C) transportation planning process that results in plans and programs consistent with the planned development of the metropolitan area. To ensure the 3C process is carried out, the U.S. Department of Transportation Federal Highway Administration (FHWA) and the Federal Transit Administration (FTA) have issued planning regulations that all urban areas over 200,000 persons must undergo a Certification Review. As a result of these regulations governing the development of metropolitan transportation plans and programs for urbanized areas, like the Rockford, Illinois area, the RMAP FY 2017 UWP is developed under the provisions established in FAST Act and MAP-21.

RMAP most recently went through its joint FHWA & FTA Certification Review in October 2015. Upon completion of the FY 2017, RMAP is awaiting the finalized certification review report from the joint FHWA & FTA review team. Prior to the 2015 review, RMAP received a letter from FHWA & FTA on June 14<sup>th</sup>, 2012, that stated that both agencies certify the transportation planning process for the Rockford, Illinois Transportation Management Area (TMA) for the Rockford Urbanized Area.

To maintain their four-year time period to review the RMAP planning process and documents, representatives from FHWA and FTA are tentatively scheduled to conduct an on-site review during the 2019 fall/winter season.

The RMAP FY 2017 UWP guides the Federal, State and local transportation planning activities in the Rockford metropolitan area that support the overall goal of ensuring that our surface transportation system can continue to support both the local & U.S. economy and provide residents with a good quality of life. With future surface transportation legislation, this overall principal must continue programs and funds that result in ensuring that our nation's transportation and infrastructure aid in maintaining and enhancing the linkages between transportation investment and economic opportunities while preserving environmental sensitive natural resources.

As the need for focused regional collaboration has been identified within the RMAP area, it has been determined by the members of the RMAP Policy Committee and neighboring jurisdictions that the most prudent way to proceed forward with the development of thorough planning and implementation practices, strengthening of regional economic development and coordinated infrastructure investments is to develop a regional planning council (RPC). RMAP as it currently exists is not a RPC. Some of the core areas of the RPC fall outside of the MPO planning goals and primary objectives of the information that is required to be included in a long-range transportation plan, unified work program and transportation improvement program. From a professional planning perspective, the RPC will include and connect many of the issues that urban areas and overall planning processes are confronted with. The FHWA/FTA planning funds that RMAP receives through our IDOT Intergovernmental Agreements are restricted to transportation planning activities / factors and those directives established under the authorized federal transportation legislation. Transportation planning funds & factors are intended for projects that are based upon the **continuing, comprehensive** transportation planning process carried out **cooperatively** by states and local communities in conformance (**3-C**) with federal law. In addition to these requirements, RMAP and its partner agencies have identified the significant importance of coordinated planning as it applies to the progress of the region's economic development, transportation infrastructure system, environment and land-use patterns. The MPO, as it continues its responsibilities set forth by Federal and State laws and requirements, will also play a key role in the transportation planning elements of the RPC's overall regional planning initiatives.



## PART 2 – OVERALL UWP GOALS

Regional transportation planning in the RMAP Metropolitan Planning Area is funded primarily with Federal funds stemming from the Fixing America's Surface Transportation Act (FAST Act) and MAP-21. The details of this funding are discussed in subsequent sections of this report. In accordance with the FAST Act, MAP-21 and the RMAP Year 2040 Long-Range Transportation Plan (LRTP), the overall goals of this UWP are in concurrence with the overall goals of FAST Act and the LRTP, as listed in Chart 2, below.

### CHART 2 – MPO PLANNING GOALS

P G #	
1	Support the economic vitality of the Rockford Metropolitan Planning Area, especially by enabling global competitiveness, productivity and efficiency.
2	Increase the safety of the transportation system for motorized and non-motorized users.
3	Increase the security of the transportation system for motorized and non-motorized users.
4	Increase the accessibility and mobility options available to people and for freight.
5	Protect and enhance the environment, promote energy conservation, improve the quality of life and promote consistency between State and local planned growth and economic development patterns.
6	Enhance the integration and connectivity of the transportation system, across and between modes, for people and freight.
7	Promote efficient system management and operation.
8	Efficiently preserve the existing transportation system

### PLANNING EMPHASIS AREAS

On March 18<sup>th</sup>, 2015, FHWA/FTA jointly issued Planning Emphasis Areas (PEAs) for MPOs. The PEAs are relevant planning areas FHWA/FTA want MPOs to develop and identify work tasks for inclusion in the annual UWP. With refurbished focus on transportation planning activities brought about in MAP-21, Transportation Secretary Foxx and the pending issuance of proposed transportation planning regulations, FHWA/FTA are focusing on three specific planning subjects for MPOs to concentrate and encourage work activities in these areas.

Listed below are the three PEAs and RMAP's current and short-term work activities programmed in our annual planning document:

- MAP – 21 Implementation:** IDOT, RMAP and other MPOs in Illinois have established a Performance Measures Technical Advisory Group on how to develop a strong methodology and approach on this planning topic as required by MAP-21. Work for this item has included attending meetings hosted by IDOT to discuss feasibility of measures to be created within the MPOs and IDOT frameworks as well as research regarding final USDOT guidance for the development of measures within the specified areas required by MAP-21. Another planning area is RMAP's joint cooperation in working with IDOT in the development of a Strategic Highway Safety Plan (SHSP). At this time, tasks have included coordinating with IDOT to receive the final draft versions of Strategic Highway Safety Plans for Boone County, IL and Winnebago County, IL; reviewing the draft documents; coordinating with Winnebago County and

Boone County Highway Departments to provide feedback regarding the drafts; and coordinating with IDOT and MPO partner agencies to distribute the draft plans to organizations pertaining to the 4E's (engineering, education, enforcement, EMS). Also, requests have gone out to RMAP partner agencies to provide feedback for the document, which assisted IDOT in finalizing this planning effort in FY 2014. Work will continue on this topic into FY 2016 and FY 2017 with IDOT presenting the final draft materials to RMAP partner agencies as well as determining the next step on how to discuss & address safety issues as identified by the SHSP plans. As further final regulations and guidance is issued by FHWA/FTA on specific planning tasks for MAP-21 implementation, RMAP will attempt to shift our work activities to respond to those areas, specifically as they relate to the update and development of the RMAP 2040 LRTP.

2. **Models of Regional Planning Cooperation:** Because of several geographic / transportation facilities that necessitate on-going cooperation between a wide-variety of planning partners:

- Access / location to (A) Chicago/O'Hare Airport & (B) Chicago/Rockford Airport,
- Interstates 39 – 43 – 88 & 90 connections in our immediate area (IDOT and the Illinois Toll Highway Authority),
- Number of Class 1 Railroads in our planning and surrounding area,
- Easy access to passenger rail in our area with connections to Amtrak (coming), and Metra (within 30- 45 minutes away), and
- RMTD implementation of a new route structure in December 2013;

RMAP has a strong work relationship with many organizations in the region even outside of our normal working connections with our planning partners on the RMAP Technical Committee and Policy Committee. Just over the past year, RMAP has worked with these organizations in the development and/or completion of these planning activities:

- Establishment of the Urbanized Area Boundaries following the release of the Census Urban Areas. Since we share a boundary with the State Line Area Transportation Study (SLATS – Beloit MPO) to the north, we continued to coordinate with SLATS on this and other issues;
- Attendance at regular Technical and Policy Committee meetings of both MPOs (RMAP and SLATS) and meetings of both staffs as the need arises;
- Updating the Functional Classification System for RMAP. Since the RMAP Metropolitan Area Boundary now includes portions of three counties (Boone, Ogle and Winnebago) we worked with each of the county highway departments to ensure cooperation between the urban and rural highway networks to foster a logical highway/street network;
- Updating and expansion of the Travel Demand Model and the inclusion of two Regional Economic Modeling Inc. software programs into our normal work functions. Currently the TDM modeling area includes all of Winnebago County, Boone County and the SLATS MPO in Winnebago County and just the Rock County portion in Wisconsin. In FY 2014, RMAP received SPR funds to expand the TDM into Ogle County and also to add REMI to interface with our VISUM TDM. A portion of the work includes working with the Wisconsin Department of Transportation on getting traffic and land use data from them since they maintain the TDM for SLATS;
- The current improvements to the Jane Addams Memorial Tollway (I-90) were the result of many years of discussions RMAP has had with the Illinois Tollway Authority. RMAP also has on-going exchange of information with the Tollway's staff on other related issues related to future traffic and land use information to ensure a mutual agreement approach is consistent with good planning processes.
- Recent announcement of adding Amtrak service to the RMAP area. Again, this required a long-term commitment and cooperation between IDOT, RMAP and other planning partners in the area, especially the railroads.

- The annual Tri-State Alliance event. The mission of the Tri-State Alliance is to convene the region's leaders to address issues that affect commerce so that the quality of life is improved for the region of Northern Illinois, Northeastern Iowa, and Southwestern Wisconsin.

3. **Ladders of Opportunity:**

This PEA is to identify transportation connectivity gaps in access to essential services that might provide Americans more transportation options that are more affordable and reliable. There are several planning projects that RMAP has completed and are currently underway that will address this issue to enhance greater access to education and employment opportunities just to name a few of the services that our transportation system provides connections with.

- RMAP recently completed the required **Title VI and Environmental Justice Assessment** for the Rockford Mass Transit District for the years 2014 to 2017. RMAP will continue to monitor data and other related information over the next several years.
- The Coordinated Public Transit Human Services Transportation Plan (HSTP) purpose is to assess the needs and concerns of public transit users in the area, develop strategies that will address and remedy these concerns and increase the overall efficiency of transit services provided to the public. While transit improvements benefit public transit users as a whole, particular attention was given to public transit dependent populations including elderly individuals, persons with disabilities and individuals with low incomes in the development of this plan. As part of the HSTP planning process, the RMAP Mobility Subcommittee meets on a regular basis to ensure that issues are fully discussed with other agencies in the region / area that provide transport services to that targeted population. During Fiscal Year 2017, RMAP staff will engage the Mobility Subcommittee in an update to the HSTP, taking into account developments since the plan's release and updating priorities of the future of transit needs for the region. RMAP'S **Limited English Proficiency Plan (LEP)** is a required planning document that clarifies the responsibilities of recipients of federal financial assistance from the U.S. Department of Transportation (DOT) and assist in fulfilling our responsibilities to Limited English Proficient (LEP) persons. The LEP helps identify reasonable steps to provide language assistance for LEP persons seeking meaningful access to RMAP's MPO programs as required by Executive Order 13166.
- **VISUM Travel Demand Model (TDM) and adding the transit mode split.** Included in the expansion of the TDM and interfacing with REMI with the above-mentioned planning project will be the addition of the transit mode split in the TDM. This will allow RMAP and RMTD to have another tool to develop different planning and route scenarios to determine the potential impacts on future routing adjustments / changes.
- One of the objectives of this PEA is to provide greater access for citizens to reach public transportation by walking and to offer other mode choices that reduces their household expenses on transportation. Over the past several years as a result of the **RMAP Bicycle and Pedestrian Plan** being completed, several agencies have increased funding for their capital improvements program for additional bicycle and pedestrian facilities. Also, IDOT has two major reconstruction projects underway on West State Street (U.S. Bus 20) and South Main Street (IL 2) which will include bikeways, enhance pedestrian and bus facilities. One of the staff work priorities starting in FY 2016 will be updating the current RMAP/RATS Bicycle – Pedestrian Plan at: [http://www.rmapil.org/assets/documents/bike\\_ped\\_plan.pdf](http://www.rmapil.org/assets/documents/bike_ped_plan.pdf).
- With **MAP-21 and the allocation of Transportation Alternative funds directly to Transportation Management Areas**, RMAP will program these funds that will improve accessibility to an area high school and grade school along a RMTD fixed-route corridor (a Principal Arterial Route) that currently lacks bike/pedestrian facilities and a redevelopment project along the Rock River that will connect to other bikeway/pathway facilities in the area.
- Identify connectivity gaps in providing access to essential services.

Planning Emphasis Areas will be updated in the final FY 2017 UWP pending the potential release of updated PEA information anticipated in March-April 2016.

### CHART 3 – RMAP MPO DIRECTIVES

## **FHWA / FTA: MPO Planning Regulations & Work Tasks**

- |  |  |
|--|--|
| <ol style="list-style-type: none"><li>1. MPO Organization</li><li>2. MPO Boundaries</li><li>3. MPO Agreements</li><li>4. Land Use</li><li>5. Economic Development</li><li>6. Air Quality Conformity</li><li>7. Environmental Mitigation</li><li>8. Project Programming</li><li>9. Fiscal Constraint</li><li>10. Congestion Management</li><li>11. Access Management</li><li>12. Demographics</li><li>13. Public Participation</li><li>14. Interagency Consultation &amp; Cooperation</li><li>15. Mobility</li><li>16. Title VI of Civil Rights Act &amp; Environmental Justice</li></ol> | <ol style="list-style-type: none"><li>17. Project Readiness / Delivery = Transportation Improvement Program (TIP)</li><li>18. Americans with Disabilities Act</li><li>19. Safety</li><li>20. Security</li><li>21. System Management and Operations</li><li>22. Asset Management</li><li>23. Intelligent Transportation Systems</li><li>24. Performance Management</li><li>25. Travel Demand Forecasting</li><li>26. Freight</li><li>27. Intermodal Connections / Connectivity</li><li>28. Transit</li><li>29. Bicycle – Pedestrian Facilities</li><li>30. Non-Transportation Infrastructure</li><li>31. Regional Economics</li><li>32. Healthy Communities</li></ol> |
|--|--|

MPOs throughout the United States are obligated by federal law and regulations to consider a multitude of issues and work tasks to ensure that the overall transportation planning process is inclusive of numerous social, environmental and economic factors. Chart 3 lists most of the subjects that MPO staffs are responsible for in the development of their programs, analysis, studies and providing technical assistance.

### PART 3 – RMAP & PARTICIPANTS

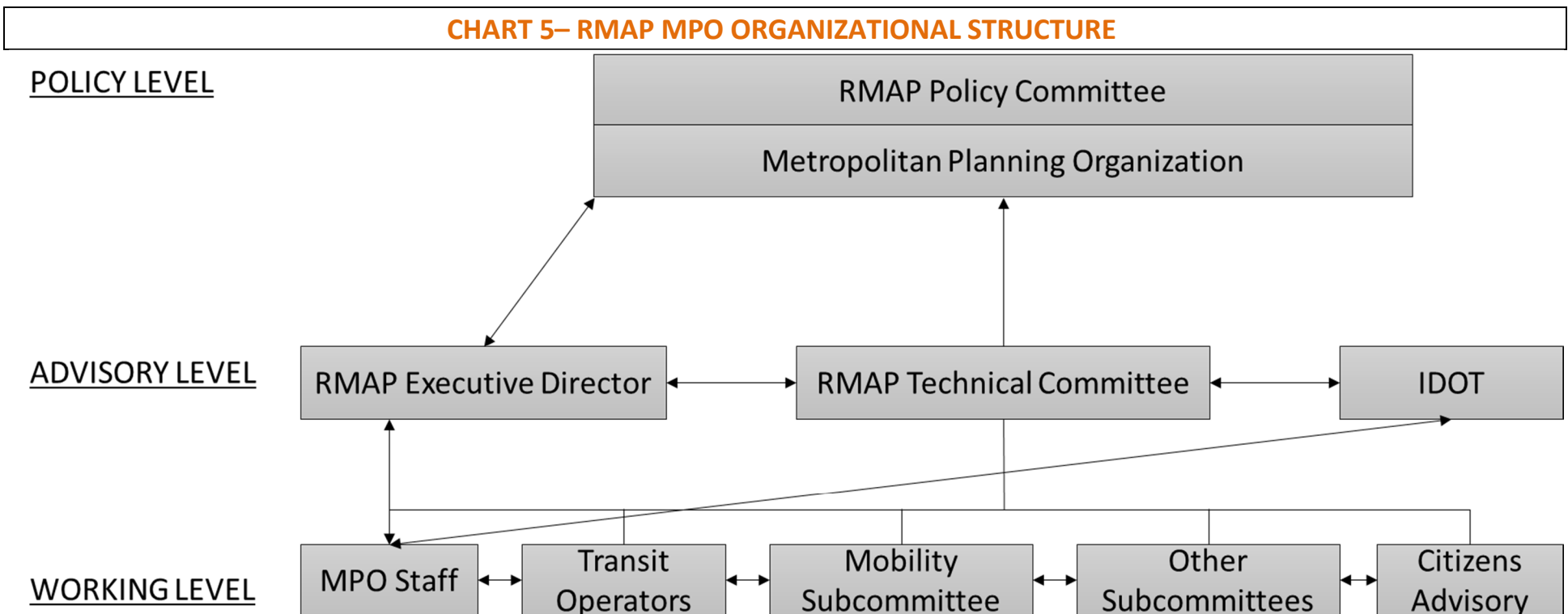
The following agencies assist RMAP in conducting transportation planning within the RMAP planning area and this cooperative, comprehensive and continuous work is coordinated by the UWP. These agencies hereafter referred to as the RMAP participants, have agreed to cooperate and work toward completing the proposed products and elements of this work program.

## CHART 4 – TECHNICAL PLANNING PARTICIPANTS

<b>RMAP TECHNICAL COMMITTEE MEMBERS</b>	
1. Belvidere Public Works Department	BPWD
2. Boone County Highway Department	BCHD
3. Chicago / Rockford International Airport	CRIA
4. Illinois Department of Transportation	IDOT
5. Loves Park Planning Department	LPPD
6. Loves Park Public Works Department	LPPW
7. Machesney Park Planning Department	MPPD
8. Rockford Public Works Department	RPWD
9. Rockford Community Development Department – Planning Division	RCDP
10. Rockford Mass Transit District	RMTD
11. Roscoe, Village of	VROS
12. Winnebago County Planning & Economic Development Department	WCPD
13. Winnebago County Highway Department	WCHD
14. Winnebago, Village of	VWIN
15. Rock River Water Reclamation District	RRWRD
16. Winnebago County Forest Preserve District / Forest Preserves of Winnebago County	WCFPD
17. Boone County Conservation District	BCCD
28. Rockford Park District	RPD
19. Winnebago County Soil & Water Conservation District	WCSWCD
20. Poplar Grove, Village of	VPG
<b>RMAP PARTICIPANTS: NON-VOTING</b>	
21. Illinois Environmental Protection Agency	IEPA
22. Illinois State Toll Highway Authority	ISTHA
23. IDOT, Division of Public and Intermodal Transportation	DPIT
24. IDOT, Division of Urban Program Planning	OPP
25. Ogle County Highway Department	OCHD
26. Boone County Council on Aging	BCCA
27. State Line Area Transportation Study	SLATS
28. Federal Highway Administration, IL Division	FHWA
29. Economic Development District of Northern Illinois	EDDNI
30. Stateline Mass Transit District	SMTD
31. Illinois Department of Natural Resources	IDNR
32. Rockford Metropolitan Agency for Planning	RMAP

As a result of discussions and action by the RMAP Policy Committee on May 29, 2009, the lead agency for the MPO in Rockford, Illinois is now the Rockford Metropolitan Agency for Planning (RMAP). Previously, the City of Rockford was designated the lead agency. Starting with the UWP in FY2009 and continuing for FY2017, RMAP will coordinate the work and ensure compliance with State and Federal requirements. RMAP is also responsible for the majority of the administrative and record keeping needs of the MPO. RMAP has the responsibility of preparing and maintaining the principal documents required by Federal law: the annual Transportation Improvement Program, the Long-Range Transportation Plan (prepared every 5 years), the annual Unified Planning Work Program, Human Services Transportation Plan, and the assessment to ensure non-discrimination (Title VI) and Environmental Justice. The Lead Agency also maintains the Travel Demand Model (TDM) for the MPO area and surrounding region.

In May 2008, the Policy Committee of RMAP (previously RATS) decided to restructure the internal organization of the Rockford MPO and to address the issues that RMAP and other MPOs are facing nationally. The following diagram displays the new organization of RMAP and MPO staff.



## PART 4 – TRANSPORTATION PLANNING FUNDING SOURCES

The transportation planning coordinated through RMAP is typically funded through several subsidies and programs. These sources are identified in Chart 6.

### CHART 6 – FUNDING SOURCES FOR MPO TRANSPORTATION PLANNING

<b>FHWA PL</b>	Funds provided through the Federal Highway Administration (FHWA), annually sub-allocated to RMAP by the Illinois Dept. of Transportation (IDOT); used primarily for highway planning, but can be used for other related transportation planning work. (20% match required)
<b>FTA 5305(d)</b>	Funds provided through the Federal Transit Administration (FTA); annually sub-allocated to RMAP and other MPOs throughout the State by IDOT: aimed primarily at planning needs related to public transit and paratransit. In most years, these funds are reserved for use by the RMAP Lead Agency. The transit agencies typically use 5307 or other sources for their planning activities. (20% match required)
<b>SPR</b>	State Planning & Research funds; allocated to the States via MAP-21 & FAST Act for use on unique planning, research and feasibility studies. The funds are sometimes passed on to local governments for the same purposes. (20% match required.) When RMAP receives these funds, a separate intergovernmental agreement is develop and authorized by IDOT and the local governmental body.
<b>State (IDOT) Metro Planning Funds</b>	Funds directly from the State of Illinois (IDOT) for MPO planning purposes only.
<b>Local Contribution Funds (LC)</b>	Funds provided by local RMAP participants for MPO planning purposes only.

## PART 5 – FUNDING AVAILABLE FOR FY 2017 & WORK ELEMENT BUDGET

Funding allocations available to the Rockford Metro Area during FY 2017 are listed in the table below. RMAP will utilize the entire State Planning Funds allocation to cover the entire match for the PL and 5305(d) funds. We intend to overmatch the federal funds as shown in Chart 7. The Local Contribution / matching funds from our local units of government also will be used to fund the RMAP PL/5305(d) planning operations as stated in the adopted Cooperative Agreement.

### CHART 7 – FUNDS FOR FY 2017

Source	Amount	Timeframe	Purpose
Federal funds:			
FHWA-PL	\$ 537,361	7/1/2016 to 6/30/2017	RMAP Planning Process
FTA-5305(d)	\$ 149,266	7/1/2016 to 6/30/2017	RMAP Planning Process
State IDOT Planning Funds (SPF)	\$ 187,211	7/1/2016 to 6/30/2017	RMAP Planning Process
Local Contribution (LC)	\$ 148,594	7/1/2016 to 6/30/2017	RMAP Planning Process
<b>TOTAL:</b>	<b>\$ 1,022,432</b>	7/1/2016 to 6/30/2017	RMAP Planning Process

### CHART 8 - BUDGET OF PLANNING WORK ELEMENTS / ACTIVITIES FOR FY 2017

Work Element Task	Work Element #	Budget Amount
Unified Work Program (UWP)	1	\$ 50,000
Technical assistance (TA) – Overall Subtotal:	2	\$ 163,000
* Greenway Plan & Greater RMAP Environmental / Educational Network	2.01	\$ 13,000
* Perryville Road Extension	2.02	\$ 3,500
* Town Hall Road Corridor – Connection to the Jane Addams Tollway (I-90)	2.03	\$ 3,500
* RMAP/RATS Bicycle – Pedestrian Study	2.04	\$ 66,000
* Traffic Simulation Modeling Assistance to City of Rockford & IDOT	2.05	\$ 13,000
* Organize and updating RMAP internal mapping operations	2.06	\$ 5,000
* Environmental / NEPA / Corridor Analysis – Watershed Planning	2.07	\$ 15,000
* Winnebago County & Boone County Traffic Simulation Assistance for TIP	2.08	\$ 13,000
* RMAP & Other Public Transit Organizations: Issues/Subjects/Topics	2.09	\$ 16,000
* RMAP Regional Transportation Freight Analysis	2.10	\$ 15,000
Administration (AD)	3	\$ 280,000
Public Participation (PP)	4	\$ 52,000
Transportation Data and Forecasting (TDF)	5	\$ 71,000
Land Use-Planning, Data Collection and Forecasting (LUPDCF)	6	\$ 135,000
Transportation Improvement Program (TIP)	7	\$ 60,500
Congestion and Transportation System Management (CTSM)	8	\$ 75,000
Long-Range Transportation Plan (LRTP)	9	\$ 135,932
	TOTAL	\$ 1,022,432

Greater details describing the above work are contained in the following text and the attached charts. Chart 10 – presents a summary funding chart, which is the format that is included in the Intergovernmental Agreement RMAP and IDOT. Chart 11 – displays the nine work elements divided between the four different funding sources and the projected work hours. . Chart 12 – is the Object Class Budget.

With regard to the RMAP Planning Process, in many cases, several work products are lumped together because of uncertainties regarding the time needed to accomplish these tasks and other special work responsibilities that arises each year, sometimes unexpectedly.

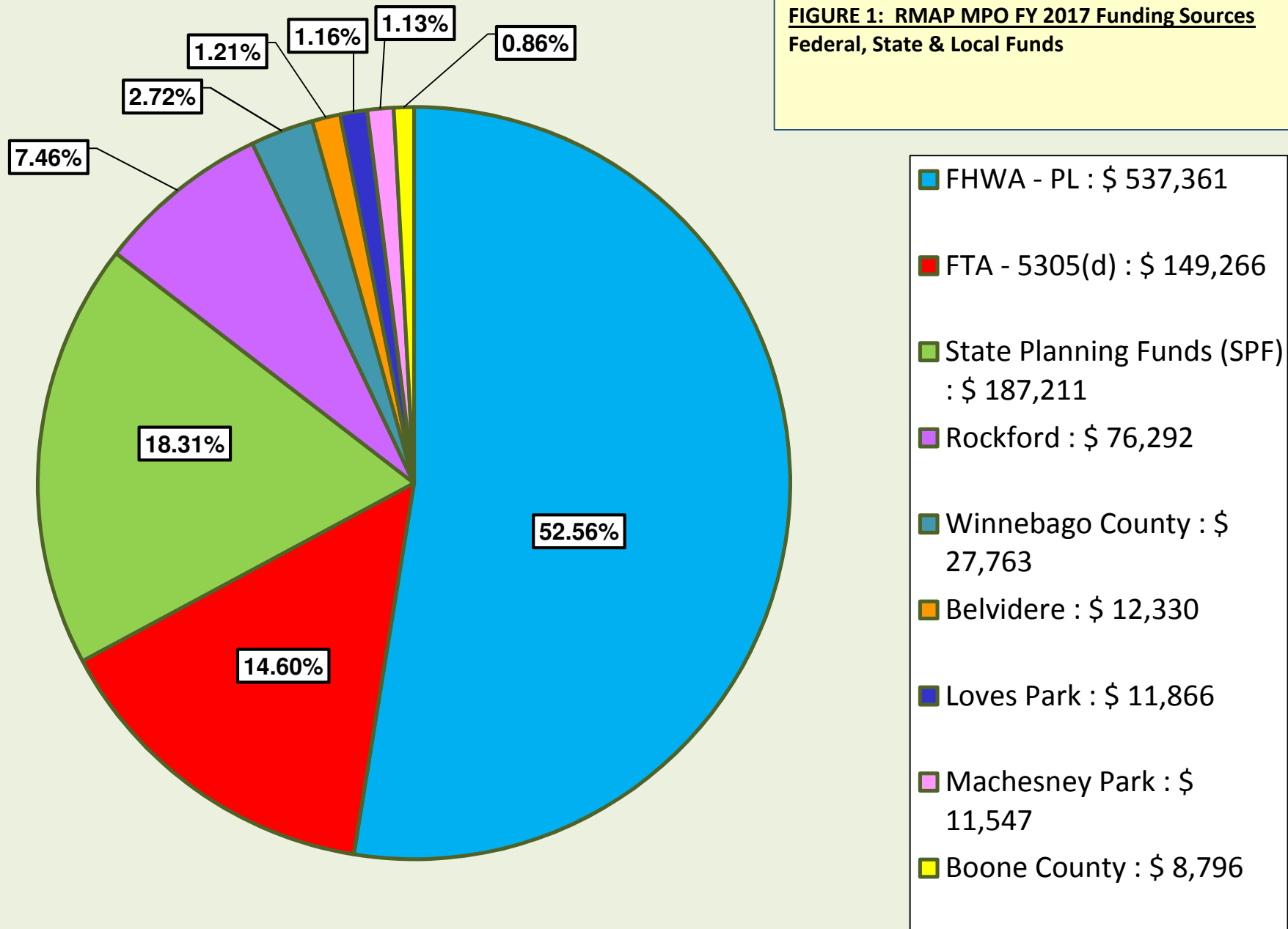
## PART 6 – FUNDING OF RMAP

### OVERALL BUDGET FOR FY 2017:

The funding allocations of FY 2017 FHWA-PL, FTA-5305(d) (combined 67.16%), State Planning Funds (18.31%) and Local Contribution funds (14.53%) are listed by name of the specific work element in Chart 9, which is located at the end of this document. Figure 1 and Chart 8 provides a basic overview summary.



**FIGURE 1: RMAP MPO FY 2017 Funding Sources**  
Federal, State & Local Funds



### CHART 9 – RMAP FUNDING ALLOCATION SUMMARY FOR FY 2017

Entity/Activity	FHWA PL	SPR	FTA 5305(d)	Total Federal	State Planning Funds	Local Contribution Funds	Total
<b>RMAP : for MPO Planning</b>	\$ 537,361		\$ 149,266	\$ 686,627	\$187,211		\$ 873,838
<b>RMAP : MPO Local Funds</b>						\$ 148,594	
City of Rockford						\$76,292	\$76,292
City of Loves Park						\$11,866	\$11,866
Village of Machesney Park						\$11,547	\$11,547
Winnebago County						\$27,763	\$27,763
City of Belvidere						\$12,330	\$12,330
Boone County						\$8,796	\$8,796
<b>SUBTOTAL:</b>	<b>\$ 537,361</b>		<b>\$ 149,266</b>	<b>\$686,627</b>	<b>\$ 187,211</b>	<b>\$ 148,594</b>	<b>\$ 1,022,432</b>
<b>The following planning project is funded, but under separate intergovernmental agreement between RMAP and IDOT.</b>							
<b>Travel Demand Model &amp; Economic Connection:</b>		\$ 325,000			\$ 81,250		\$ 406,250
<b>SUMMARY TOTALS</b>	<b>\$ 537,631</b>	<b>\$ 325,000</b>	<b>\$ 149,266</b>	<b>\$ 686,627</b>	<b>\$ 268,461</b>	<b>\$ 148,594</b>	<b>\$ 1,428,682</b>

Occasionally, a funding need / planning project is identified beyond the planning funds that are annually allocated by IDOT. Sometimes, IDOT is able to respond to this need by allocating State planning funds or available Federal SPR funds. In January 2008, RMAP received an additional \$100,000 (or \$80,000 [80% amount]) in SPR funds for the Regional Freight and Model Conversation Study. These SPR funds / separate contract expired in December 2010. In January 2010, RMAP secured an additional \$200,000 (or \$160,000) in SPR funds for two new planning initiatives, a corridor study for South Main Street / IL 2 and the Greater RMAP Environmental and Education Network (GREEN). Both of these planning projects have been completed.

In FY 2014 RMAP received an additional SPR allocation of \$325,000 (80% / \$406,250-100%) for the expansion of the travel demand model into Ogle County, adding the transit mode split option, updating the existing modeling area of Boone County, Winnebago County and SLATS MPO area, developing land use forecast and purchasing and linking the TDM with two new software programs (TranSight and Metro-PI) from REMI. This is a separate planning project and no funds will be included or budgeted with the PL, 5305(d), SPF and LC funds that are used to fund the normal RMAP planning functions. A separate intergovernmental agreement (IGA) between IDOT and RMAP has been executed in September 2013 for these SPR funds, which funds this project through FY 2018. This planning endeavor is approximately 38% completed.

One planning project that will continue to be followed-up on is the Rockford Regional Freight Study (RRFS). As a result of on-going construction and future development activity at and around the Chicago/Rockford International Airport (RFD), further planning analysis might be needed to continue to expand upon the existing economic development and employment hub. The planning emphasizes would be to foster those existing and potential economic development activities with the intermodal connections at RFD that would be linked to the nation's Primary Freight Network. If the need arises to continue the on-going planning effort of the RRFS and around the RFD area, RMAP and our regional planning partners might be seeking additional SPR funds in FY 2017.

## PART 7 – PLANNING PRIORITY ACTIVITIES FOR FY 2017: by UWP WORK ELEMENTS

Listed below are the major planning activities scheduled for FY 2017 by the nine (9) Work Elements. For each work planning activity, a brief summary describes the nature of the possible tasks that are either currently underway in FY 2016 and/or will continue/start in FY 2017. In the annual RMAP MPO Intergovernmental Agreement with IDOT the Scope of Services describes the work activities / elements that are eligible for FHWA-PL, FTA-5305(d) and State Metro Planning Funds reimbursements.

### 1 – Unified Work Program (UWP):

**Proposed budget amount: \$ 50,000**

The UWP is prepared annually to coordinate and direct transportation planning in the urban area. The UWP coordinates planning related to transit, highways, active transportation modes, and other surface transportation modes (primarily freight, rail, and air). The program suballocates the various funding sources described above among the various work elements and studies proposed for the year and/or consultants hired, as needed, to perform the work. The UWP identifies responsibilities and expected work products throughout this reporting year.

During the fiscal year a UWP for the following fiscal year is prepared and published. Also, during any given year, amendments may be necessary to the current UWP to compensate for changes in priority or need. The Lead Agency (and IDOT) is responsible for advising all RMAP participants regarding possible eligible activities and for preparing formal amendments to the current year UWP when needed.

#### Staff Activities:

- Preparation of annual work program and amendments as necessary
- Review invoices and bills and recommend authorization of payment
- Maintain financial data by work elements
- Preparation of quarterly progress reports to IDOT
- Monitor planning work activities / projects
- Preparation of overall RMAP budget and intergovernmental agreement (IGA) with IDOT
- RMAP will update and amend the FY 2017 UWP as needed. RMAP will prepare and publish the FY 2018 UWP next spring 2017 and advise all RMAP participants regarding possible eligible activities which are covered by IGA.

## 2 – Technical assistance (TA) on special studies and other planning efforts:

**Proposed budget amount: \$ 160,000**

RMAP will provide technical assistant and/or perform the following:

### 2.01 – Greenways Plan & Greater RMAP Environmental – Educational Network (GREEN)

As an effort that began in FY 2013, RMAP will continue to be the coordinating agency to updating the Greenway Plan for the metropolitan planning area in FY 2017 and beyond.

The 4<sup>th</sup> version of the Boone and Winnebago County Greenways Map was completed in late 2015. It is important to also note that a companion Greenways Planning Document was developed with the Greenways Map. A written document has not been produced since the first map was developed in 1997. The Greenways Planning Committee felt that this was a very important task to complete with any future map updates as well. The 2015 edition updates recent property acquisitions, floodplains, steep slopes, and other technical GIS information that has been added. Also, as a result of staffing changes at RMAP and the emphasis that RMAP is placing on transportation planning & environmental linkages, this 4<sup>th</sup> version of the map and plan will continue to be a major work activity. During FY 2017, staff will continue to update the GIS data layers and coordinate with the RMAP Technical Committee, Winnebago County GIS, other partner agencies, and the general public that have a strong interest in this planning effort.

Assisted by – Rockford Park District, Winnebago County Forest Preserve District, Belvidere Township Park District, Boone County Conservation District, Natural Land Institute, Boone County Soil and Water Conservation District, Winnebago County Soil and Water Conservation District, and the Illinois Department of Natural Resources.

Estimated Budget: \$ 13,000

### 2.02 – Perryville Road Extension

In conjunction with SLATS, identify corridor for ROW and determine capacity needs in corridor between IL-251 and I-90. In 2008, another segment of Perryville Road was completed and opened to Swanson Road. RMAP and Winnebago County staff will monitor the traffic patterns in the area for changes in ADT. Winnebago County has asked for MPO assistance with regards to traffic projections and changes in travel patterns when the link from Swanson Road to Belvidere Road will be constructed.

Estimated Budget: \$ 3,500

### 2.03 – Town Hall Road Corridor / IL Route 76 – Connection to the Jane Addams Tollway (Interstate 90)

Develop future traffic projections, alignment analysis, and capacity needs in corridor between IL-76/Caledonia Rd. (including the intersections with US Bus.20 & US-20) and I-90 (Jane Addams Memorial Tollway). To review different planning/traffic network scenarios with and without future interchange/connection to Irene Road at I-90 and possible connection to IL-76.

Estimated Budget: \$ 3,500

#### 2.04 – RMAP/RATS Bicycle – Pedestrian Study

RMAP staff began updates to the region's bicycle and pedestrian study in the form of data collection, GIS data creation, and research on new best practices and findings. The main purpose of this Study is to identify and catalog a region-wide system of bicycle and pedestrian facilities (bike lanes / bike routes), and to connect with existing and planned shared-use path facilities, existing and planned public transportation services, promote active transportation and provide model development regulations and ordinances to encourage bicycle and pedestrian friendly growth in the RMAP area. The first plan was completed and adopted in 2008. RMAP/RATS Bicycle/Pedestrian Study was amended to the Year 2035 RATS LRTP on January 24, 2008 and since has been amended into the 2040 LRTP. Over the past several years, the City of Rockford has started to allocate funds to implement an on-street bicycle network. Also, several other agencies have completed constructing new shared-use paths links to the regional system. This will be a major work activity of RMAP staff during FY 2017. Included in this plan update will be to develop a more regional outline for "Complete Street" guidelines that can be used as a reference for the local units of government. This work activity might continue into FY 2018 if needed.

Estimated Budget:       \$ 66,000

#### 2.05 – Traffic Simulation Modeling Assistance to the City of Rockford, IDOT & expansion of TDM into Ogle County

- *IL-2 / North Main Street corridor:* RMAP will assistance in this analysis of examining the impacts of the Auburn St / N. Main St. intersection, the IL-2 corridor (Auburn Street to Riverside Boulevard) and the surrounding area with regards to potential of economic impacts with the area's first multi-lane roundabout that was completed in 2013. This project will be one of the initial sub-areas using the integration of VISUM and REMI.
- *IL-2 / Main Street – Church Street corridor:* RMAP will provide assistance in this assessment of the one-way couple system for this corridor in downtown Rockford.
- *IL-251 / N 2<sup>nd</sup> Street – Whitman Street – Rural Street interchange:* The City of Rockford wants to study the re-construction & reconfiguration of the Whitman Street interchange with IL-251.
- *Other special requests* – These requests come throughout the year that are not planned, but are needed for an analysis, corridor study, intersection design study or some other related issues that RMAP can provide TDM assistance.
- As part of the expansion of the *VISUM Travel Demand Model (TDM)* into Ogle County and the integration with REMI software programs, RMAP staff will be assisting the consultant team in performing base-year calibration, modal split and other related TDM responsibilities. This is a multi-year work effort that will continue into FY 2017.

Estimated Budget:       \$ 13,000

#### 2.06 – Organize and updating RMAP internal mapping operations

In FY 2016 RMAP made it a mission to develop its own internal mapping database that would consists of GIS shapefiles for major planning and transportation features (base files), other GIS files created internally for specific projects, as well as the most current U.S. Census data for easy access to demographic data and analysis of the data. This will be a continual project that will require ongoing updates, modifications and new data creation. This database will allow staff to utilize up to date information to efficiently assist in the development of RMAP planning documents. Work will continue in FY 2017.

Estimated Budget:       \$ 5,000

#### 2.07 – Environmental / NEPA / Corridor Analysis – Watershed Planning

To continue to follow-up from the GREEN Strategy Action Plan and the FHWA/FTA Federal Certification review and report of 2012 of the RMAP 3-C transportation planning process, RMAP will lead and provide assistance to our local units of government to address and resolve merging transportation and environmental / watershed planning issues. The example is the recent report from the National Transportation Safety Board on a train accident at the CN / Mulford Road intersection. RMAP has participated in IDOT's / Illinois Center of Transportation project of "Incorporating NEPA into IDOT and MPO Planning Process (ICT Project R27-132). This effort was completed in 2014. To continue this planning effort and to follow-up on an issue identified in our last FHWA/FTA Certification Review report, staff will incorporate an environmental screening table for all the projects listed in the 2040 RMAP LRTP. The table would include the name of the project, purpose and need, the lead agency primary responsible for the project, other possible participating agencies and agencies that should be consulted with. This will continue into FY 2017.

Estimated Budget: \$ 15,000

#### 2.08 – Winnebago County, Boone County & Ogle County Traffic Simulation Assistance for TIP projects

To assist all public agencies in the RMAP region, continue to provide current and projected traffic volumes and other related information for the development and inclusion of projects to be listed in the annual RMAP TIP.

Estimated Budget: \$ 13,000

#### 2.09 – RMTD and Other Public Transit Organizations: Issues/Subjects/Topics

Technical Assistance for the Rockford Mass Transit District and partner agencies/user groups providing transit services within the RMAP planning area includes providing maps, GIS & demographic data and researching transit related programs/data upon request. These work products assist transit partners in analyzing their current routes/networks in spatial relationship to regional demographic data. This technical assistance additionally helps to better determine areas of need related to transit, as well as assists in analyzing current transit route effectiveness. Other aspects of this element include provision of updates to RMTD and other partner agencies/user groups providing transit services on work RMAP is performing, attendance at public transit partner agency meetings, and other work as required by the needs of the RMAP Mobility Subcommittee. This work will be executed on an as needed basis. Estimated Budget: \$ 16,000

#### 2.10 – RMAP Regional Transportation Freight Analysis

Following up on the regional freight analysis of the RMAP and surrounding area of freight movement to / from / through the RMAP Metro Planning Area (MPA). Emphasis will be placed upon determining the current and projected interaction between the different modes of transportation in the RMAP MPA, with special interest upon the CRIA, Global 3 facility in Rochelle and locally known commercial, industrial, and manufacturing employment areas. Staff will continue to monitor the development of Primary Freight Network and other associated national federal issues. Additional supplemental work might be done to develop possible transportation connections and freight flows to sub-areas zones to enhance economical supply chains and the region's overall economy. In FY 2015, RMAP completed a rail site feasibility study for a sub-area around the Chicago/Rockford International Airport (RFD). The site study evaluated possible rail connections from existing transportation facilities in the area but also the feasibility of utilizing other utility infrastructure to develop an intermodal industrial zone. As a result of on-going construction and future development activity at and around RFD, additional planning analysis might be needed to continue to expand upon the existing economic development and employment hub. If so, RMAP and our regional planning partners might be seeking additional SPR funds. The estimated budget listed below is for RMAP staff time to provide technical assistance for this possible study, but continue the necessary steps to implement the overall Rockford Regional Freight Study.

Estimated Budget: \$ 15,000

### 3 – Administration (AD):

**Proposed budget amount: \$ 280,000**

Under this element, the general administration work necessary for the operation of the RMAP MPO is conducted and adjutant services are provided to the RMAP Policy and Technical Committees and their subcommittees. RMAP, as the designated MPO Lead Agency, will have all the responsibility for work under this element. However, IDOT and RMAP will share some of the work, particularly related contract administration and certification. Other participants requesting reimbursements will supply information to the Lead Agency in an appropriate time frame but will not request or seek reimbursement for such administration work.

As stated in the past, this work can involve the following, as needed:

1. Administering and coordinating the RMAP / IDOT Intergovernmental Agreement (sometimes called the IDOT Planning Services Contract).
2. Preparing quarterly progress reports, financial statements and annual completion reports, where necessary, for State and Federal contracts and related record keeping and other documentation for audit purposes. Preparing reports and maintaining records to meet the accounting requirements of the local participants.
3. Procuring necessary supplies, office space and capital equipment such as computer equipment (hardware and software) and similar equipment necessary for gathering, displaying, or disseminating information.
4. Hiring and supervising employees.
5. Managing, employee benefits, performing employee evaluations, setting and disbursing salaries. Conducting similar activities necessary to maintain the MPO but not readily accountable to other specific work elements.
6. Maintaining and preparing records and documentation necessary for certifying the Planning Process for conformance with applicable State and Federal guidelines and regulations.
7. Assuring equal opportunities to Disadvantaged Business Enterprises (DBE) and minorities in contracts and subcontracts.
8. Maintenance of the Cooperative Agreement (CA) empowering RMAP as the MPO for the Rockford Urban Area.
9. As part of the recently completed reorganization effort of RMAP, the CA was updated and adopted to reflect the changes made in the internal structure of RMAP (previously RATS). At this time, the existing make-up/membership of the RMAP Policy Committee and Technical Committee stayed the same. Accordingly, RMAP did not need to go through the re-designation process of our MPO as a result of these changes.

#### Staff Activities:

- Prepare and maintain employee accounting and other documentation for record keeping.
- Prepare and distribute information material regarding MPO & staff activities.
- Minutes, reports, plans and other documents relative to MPO activities.
- Accounting / payroll information.
- Schedule, attend and provide administratively assistance for MPO meetings.
- Administer the Personnel, Affirmative Action, EEO Programs, and other MPO policies.

## 4 – Public Participation (PP):

**Proposed budget amount: \$ 52,000**

RMAP will conduct open, continuous, and participatory meetings and hearings with the public and other stakeholders pertaining to transportation planning; conduct surveys, gather feedback; disseminate information and press releases; prepare and maintain agendas, meeting minutes and other related material for RMAP's Policy Committee and Technical Committee; provide the public with easy access to information, including via a website and citizens who may need language assistance (RMAP's Limited English Proficiency [LEP] Plan); and work with subcommittees and other similar organizations in the area. RMAP will update the Public Participation Plan (PPP), providing enhanced approaches to engaging stakeholders, and continuing to provide multiple opportunities and methods for gaining input from all areas of the community.

### Staff Activities:

- Prepare and maintain agendas and meeting minutes for RMAP Policy Committee, Technical Committee, Mobility Subcommittee and other public meetings where/when RMAP staff attends to provide technical assistance.
- Holding and attending public hearings and informational open houses / meetings.
- Preparing and using citizen surveys and questionnaires.
- Developing and disseminating non-technical or informational reports and seeking feedback from these reports.
- Developing "press releases" and notifying the press of all meetings, agendas, and important transportation issues prior to decisions on these issues.
- Maintaining an open meeting format for all RMAP meetings and allowing input from the general public on all issues during those meetings. Where and when applicable, RMAP will follow the overall objectives of following Context Sensitive Solutions (CSS), which is a public participation process that seeks to engage stakeholders and the general public through early, frequent and meaningful communications.
- Maintaining open, accessible offices, and, from these offices, answering questions and requests in person or by telephone from the general public, the press and other special groups.
- Continuing to develop and maintain the RMAP web site, which now is at @ <http://www.rmapil.org>. Essentially this new web site has all the planning documents and other related RMAP information housed within the structure of the web site. This web site is continually being updated. Important notices, links to current projects and other relevant information is also regularly updated on the website homepage. One of the goals is to continue making the site as user-friendly as possible promoting public review of documents and questions to RMAP staff.

Ensure that the current adopted PPP and LEP documents and the soon-to-be updated PPP, which prescribes and schedules the primary RMAP public involvement and participating activities, meets the current federal and state guidelines and regulations. Depending on the release and final notice of FAST Act FHWA/FTA planning regulations, RMAP will update the PPP and LEP documents within the appropriate time-frame as suggested by FHWA/FTA in the final regulations.



## 5 – Transportation Data and Forecasting (TDF):

**Proposed budget amount: \$ 71,000**

Work in this Element involves the gathering, maintenance, monitoring and forecasting of a wide variety of data and information needed for the comprehensive transportation planning process.

### Staff Activities:

- Maintain and update the RMAP travel demand modeling program used in the development of traffic forecasts;
- Develop traffic count programs for various areas, corridors and intersections/interchanges;
- Monitor public transit service and regional passenger rail service;
- Monitor regional air passenger and cargo / freight information for intermodal connections and the Primary Freight Network;
- Coordinate with participating agencies in gathering other transportation data as needed to prepare technical reports and analysis as part of project development reports for transportation improvement projects.
- Develop the Functional Classification System maps for the RMAP urban area.
- Develop the Traffic Analysis Zone maps for the three-county (Boone, Winnebago and Ogle) modeling area.

### Staff Activities:

Preparing necessary information for RMAP participating agencies as requested to meet project construction / letting process. Prepare necessary technical reports on a wide variety of transportation issues that will impact the MPO and are participating agencies overall planning coordination.

## 6 – Land Use-Planning, Data Collection and Forecasting (LUPDCF):

**Proposed budget amount: \$ 135,000**

RMAP will provide technical assistance in reviewing zoning ordinances, land use plans, and socio-economic planning activities to determine future transportation needs, coordinate transportation improvements, and develop/maintain the Long Range Transportation Plan. This work is essential for determining future transportation needs, coordinating transportation improvements with other public improvements and private development, and for the development / maintenance of the LRTP. The maintenance and development of socio-economic data and forecasts include data on dwelling units, employment, population, and car and truck registrations factor into the development of the travel demand model.

### Staff Activities:

- Monitoring area construction, demolition and land use changes. Comparing census data, monitoring counts and other data with forecasts.
- The development and maintenance of comprehensive land use plans including plans for other major infrastructure improvements such as sanitary sewer, storm sewer, storm water detention, public water, public parks, and other public facilities and services.

- Monitoring changes in land use plans, laws and ordinances regarding their impact on transportation.
- Analysis and planning to assure transportation decisions and services are not discriminatory to minorities (Title VI).
- Analysis and planning to assure transportation decisions and services do not disproportionately impact or neglect persons of lower economic status in the community (Environmental Justice).
- Preparing and monitoring the Title VI and Environmental Justice assessments for the RMAP region and governmental agencies.
- Preparing necessary information for RMAP participating agencies as requested to meet the needs of each request and in the development of the LRTP and the travel demand model.
- Coordination with the Rockford Area Economic Development Council, Growth Dimensions, several of the areas Chambers of Commerce and other area entities engaged in visioning and promoting the future of the Rockford Metro area.
- Municipal and County agencies have the primary land use planning responsibility and authority for the development and maintenance of plans and data within their respective jurisdiction. RMAP's role is to review and monitor each of the land use plans to ensure overall coordination with the RMAP LRTP and TIP planning processes. RMAP uses the adopted land use plans in the development of new land use projections for use in the travel demand model.
- Using the 2010 Census data has and will continue to be an integral component of the on-going development and monitoring of the LRTP process and many of the analyses and studies performed by RMAP using the census data. One of the challenging issues facing MPOs across the United States is the use of the 2010 Census information with regards to the journey to work – mode split transportation data. The approach that the Census Bureau, US-DOT and the greater transportation profession has taken to replace the census information by primarily using the American Community Survey (ACS) will be very interesting when comparing against previous and other current local traveling trends information.

#### VISUM and REMI Transportation Planning & Economic Improvement Connection:

- Using and modifying Illinois Department of Employment Security, Bureau of Labor Statistics and Bureau of Economic Analysis data for the purpose of making employment / economic projections.
- Integrating the REMI software programs into the overall planning process at RMAP while working with the local agencies to foster a more economical – transportation improvement connection with capital programming of projects and programs. RMAP will work with the Illinois Department of Employment Security as this planning project develops.

Over the next twenty to thirty+ years, the transportation planning process will continue to develop as the local, state and national economics become more global – international dependent. The decision-making process will be looking for information on how best to program limited financial resources for those improvements that can best address these emerging trends and issues in the global supply chain. The linkage between sociodemographics, land use and transportation systems are no longer separate planning issues. It has become an integrated process. TDM and other related software programs have been developed to give additional material (knowledge) to aid in this process. RMAP will be expanding this relationship to have the ability to model the dynamic economic impact of transportation infrastructure investment projects and to forecast the benefits of these improvements. Regional Economic Models Inc. (REMI) TranSight program (program #1) is a dynamic economic and demographic impact analysis model with the ability to evaluate changes to the region's transportation network overtime. This model will allow RMAP and the local & state agencies to forecast the impacts of transportation projects within the time horizon of the LRTP. It is a structural model, meaning that it clearly includes cause-and-effect relationships. The baseline forecast represents a “no-build” scenario in which no major projects or policies are enacted. The baseline serves as a basis for comparison when conducting simulations of alternative scenarios. The standard forecast can also be useful for planners and travel demand modelers. The baseline contains highly detailed data on population

growth, employment, business output, and other variables that may assist planners in forecasting need for infrastructure. As well as, compare different infrastructure scenarios to one another to determine what infrastructure plan has the best economic and demographic input in the region. PTV-VISUM modeling data is joined into REMI's economic and demographic structure to produce benefits to the region. The user takes outputs from PTV-VISUM (i.e. vehicle miles traveled, vehicle hours traveled, and trips) and inputs them into TranSight. TranSight utilizes the travel data to calculate differences between a no-build scenario and an alternative. The travel data is then converted to economic variables such as changes in gasoline consumption, vehicle maintenance, environmental benefits, and leisure time savings. These variables are then run through REMI's model structure to generate changes in consumption, employment, and economic migration patterns at the regional level. TranSight integrates travel data into three different cost matrices designed to capture the relative effects of a faster and more efficient network. The three matrices adjust the relative costs of commuting, accessing commodities, and transporting goods and services between businesses. The three transportation cost matrices adjust components in the model related to commodity access, labor access, relative cost of production, and relative delivered price of goods. These outputs identify the quantitative economic impacts of improving the transportation network. REMI Metro-PI program (program #2) will also be used to identify where growth will occur at a localized level. Metro-PI provides comprehensive economic and demographic forecasting for sub-county geographies. Driven by a structural economic model and calibrated with local knowledge and data, Metro-PI generates forecasts at the municipal, census tract, or TAZ level, granting the user unprecedented detail about the localized effects of policy / project changes. It can analyze the effects of regional economic growth and assess the impacts / benefits at a local geographical area.

During FY 2014, IDOT and RMAP entered into an intergovernmental agreement (IGA) for this new planning endeavor. The financial details are described in Chart 8. Based upon input from IDOT, FHWA and other RMAP planning associates over the past year, the priorities of the expansion of PTV-VISUM and including REMI are:

1. To address MAP-21 performance measures that will be required by FHWA and Federal Transit Administration (FTA).
2. To include in the next update of RMAP's Long Range Transportation Plan (LRTP).
3. To determine the impacts of major TIP projects that are listed in RMAP's TIP.
4. To add the Transit mode split component to the TDM.
5. To provide economic benefits data when corridor studies are being done.
6. To aid in Freight (including air and rail) and Logistics planning with regards to both short-term and long-term benefits.
7. To assess environmental impacts in the region.
8. To assist the Illinois Department of Employment Security in development of employment projections for the RMAP planning area.

These are the major objectives and principal areas of importance that IDOT, FHWA & FTA is seeking RMAP to explore and develop using these SPR/IDOT funds.

In the signed IGA for this planning project, the following tasks are to be the accomplishments of this effort:

- **Phase A: Expansion of PTV-VISUM Modeling Program** – RMAP will expand the existing program by collecting, gathering, and adding land use data for base year calibration, dwelling unit and employment data for Transportation Analysis Zone (TAZ), traffic count, street and highway inventory for the transportation network, expand and develop the current highway network and zone structure for base year calibration; identify and update screen lines; review, and modify, if necessary, the trip generation rates; calibrate model; and review results of calibration.

**Addition of Mode Split for Public Transit** – RMAP will add transit routes, demand segments, model split calculation, transit lines/routes, stop locations and other parameters for baseline transit network, identify deficiencies of existing networks for both highway and public transit from calibration result.

- **Phase B: Land Use and Employment Scenarios** – RMAP will forecast various land use and employment scenarios by TAZ and employment categories; and review land use factors and growth management issues.

**Highway Networks Mode** – RMAP will develop highway/street networks based upon the adopted 2040 Long Range Transportation Plan; forecast network traffic volume; analyze and evaluate forecast.

**Public Transit Mode Split** – RMAP will develop public transit mode split.

- **Phase C: Integration of Regional Economic Model (REMI) with PTV-VISUM Network Model** – RMAP will integrate REMI with the calibrated PTV-VISUM.

- **Public Participation:** RMAP will conduct open, continuous, and participatory meetings and hearings with community groups, local and regional officials, the public and other stakeholders to gather comments and input pertaining to the project.

## **7 – Transportation Improvement Program (TIP):**

**Proposed budget amount: \$ 60,500**

RMAP will prepare and publish the annual TIP for the next four years (2017-2020) including modifications and/or amendments; coordination with other agencies and transit providers in development and setting priorities of various projects and transportation improvements; compliance with federal requirements; and monitoring and reporting of implemented projects. The TIP lists, categorizes, and sets priorities for transportation improvements and assures they are financially feasible, as well as coordinated with each other and with other governmental improvements and private developments. It is important to note that the TIP has 12 goals and that work towards any of these goals is encouraged:

1. Set priorities for all major transportation improvements over the next four years.
2. Assess the financial needs and resources of the RMAP agencies.
3. Account for all proposed uses of federal highway, transit and enhancement funds.
4. Reaffirm realistic state and local revenue projections.
5. Provide a fair balance of highway, transit and enhancement interests.
6. Emphasize planning and cost-effective projects.
7. Evaluate alternative cost/revenue scenarios for local transit in light of revenue uncertainties.
8. Update transit operating and financial management plans.
9. Emphasize transportation projects that have minimal adverse impact on the environment and the community.
10. Provide opportunities for participation by the public and private sector.
11. Provide better services for those persons traditionally under served by the existing transportation systems, including persons with disabilities.
12. Encourage strong regional connections through transportation projects by providing information on projects of regional significance so that partner agencies and the public can be more aware of the future of roadway improvements on a more regional level. This will also encourage the collaboration of member agencies to develop projects in concert, better serving users of roadways and transit by having well-planned and integrated projects regardless of municipal borders.

Staff Activities:

- Work to assure conformance with federal requirements including project priority setting, adherence to financial constraints and public participation.
- Work involving the publication and distribution of the (1) FY 2017-2020 TIP document and (2) FY 2016-2019 TIP document and any modifications or amendments thereto.
- Work involving coordination with private transit providers.
- Work involving the monitoring and reporting of progress of the implementation of projects in the TIP and completing the Federal List of Obligated Projects (FLOP). This work includes an initiative to create a publically accessible online database for TIP projects of past and present documents.
- The development, publishing and dissemination of the FY 2017-2020 TIP document, amendments to the document and for the coordination of all TIP work is the responsibility of RMAP. All agencies, however, are responsible for providing timely information on their proposed projects and activities, keeping all others informed of the progress of their projects, and developing project priorities that are in concert with the other agencies and the RMAP LRTP and the Public Participation Plan.

## **8 – Safety, Congestion Management and Transportation System Planning (SCM&TSP):**

**Proposed budget amount: \$ 75,000**

MAP-21 and FAST Act restructured several of the existing planning and focus areas into more centralized programs to address many challenges facing the U.S. transportation system. These challenges include improving safety, maintaining infrastructure condition, reducing traffic congestion, improving the efficiency of the system and freight movement, protecting the environment, and reducing delays in project delivery.

RMAP will improve plans for the cost-effective maintenance of transportation infrastructures, equipment and facilities; employ innovative ways to improve safety, utilization and efficiency of the existing transportation system; carefully manage additions and changes to the collector-arterial roadway network; develop, maintain, and/or encourage the use of transportation alternatives, such as non-motorized systems, telecommuting, carpooling, public transit, bicycle network, staggered work hours, “Smart Growth” principles and other techniques to reduce peak traffic and overall travel demand; and undertake special efforts to address issues on growth in freight transportation in the region.

RMAP adopted a Management & Operations Plan and the Congestion Management Process (M&O) on December 4, 2008. Based upon the June 2012 Planning Certification Review report, FHWA & FTA stated that “the M&O Plan substantially complies with Federal regulations by providing a framework for managing congestion.” RMAP will continue to work collaboratively with IDOT, RMTD, SMTD, and Boone County Council on Aging and other local and regional governments and planning partners to identify priorities, achieve a significant reduction in traffic fatalities and serious injuries on all public street by involvement in the early decisions process (i.e. corridor planning), address data challenges and develop a core performance measurement program.

When MAP-21 became the framework for investing in the growth and development of the country’s vital transportation infrastructure, the cornerstone of the programs is the transition to a performance and outcome – based program. MAP-21 established and the FAST Act continues national performance goals for Federal highway programs:

- **Safety**— Achieve a significant reduction in traffic fatalities and serious injuries on all public roads.
- **Infrastructure condition**— Maintain the highway infrastructure asset system in a state of good repair.
- **Congestion reduction**— Achieve a significant reduction in congestion on the NHS.
- **System reliability**— Improve the efficiency of the surface transportation system.
- **Freight movement and economic vitality**— Improve the national freight network, strengthen the ability of rural communities to access national and international trade markets, and support regional economic development.
- **Environmental sustainability**— Enhance the performance of the transportation system while protecting and enhancing the natural environment.
- **Reduced project delivery delays**— Reduce project costs, promote jobs and the economy, and expedite the movement of people and goods by accelerating project completion through eliminating delays in the project development and delivery process, including reducing regulatory burdens and improving agencies' work practices.

FHWA, in consultation with States, MPOs, and other stakeholders, will establish performance measures for pavement conditions and performance for the Interstate and NHS, bridge conditions, injuries and fatalities, traffic congestion, on-road mobile source emissions, and freight movement on the Interstate System. States (and MPOs, where applicable) will set performance targets in support of those measures, and State and metropolitan plans will describe how program and project selection will help achieve the targets.

For public transportation, FAST Act requires MPOs and States to establish performance targets that address national performance measures issued by the US-DOT and are based on goals outlined in law – safety, infrastructure condition, congestion reduction, system reliability, economic vitality, environmental sustainability, reduced project delivery delays, transit safety, and transit asset management. TIPs must include a description of the anticipated progress toward achieving the targets brought about by implementing the TIP.

One core emphases of MAP-21 and FAST Act is the continual aggressive safety agenda. RMAP has and will continue to coordinate the recent IDOT Strategic Highway Safety Plan initiative to develop a regional and local process to identify safety problems by working with the Boone County Highway Department, Winnebago County Highway Department and other local agencies to address those known areas/locations where safety will be improved. This planning process was launched in 2013 as part of U.S.DOT/FHWA effort to develop A National Strategy on Highway Safety – Toward Zero Deaths (TZD). The National Strategy is a data-driven effort focusing on identifying and creating opportunities for changing American culture to improve highway safety through engineering, education, enforcement and emergency medical services (4 E's). RMAP will continue to advance in the coordination and cooperation with a broad range of multidisciplinary stakeholders to improve transit, freight and vehicle safety problems by assisting agencies in applying for Highway Safety Improvement Program (HSIP) funds.

Air quality and other environmental issues will continue to be a core planning area for RMAP. For U.S. DOT funds to be authorized, approved and fund programs and projects, those specific projects in the RMAP urban area must conform to the Clean Air Act. RMAP staff will continue to monitor the ozone National Ambient Air Quality Standards (NAAQS) re-evaluation process, as well as the information for carbon monoxide and particulate matter.

#### Staff Activities:

- Defining and establishing performance measures and setting targets. Working with IDOT and other MPOs in the state, a statewide working plan will be developed to address the seven FAST Act / MAP-21 national performance management goal areas. The issues and tasks in these seven goals cover a wide-range of planning activities.

- Continuing to work with state, regional and local agencies in IDOT's Bureau of Safety Engineering Strategic Highway Safety Plan. Accident data was prepared by IDOT and the consulting firm CH2MHILL and presented in maps that depicted the various accident/crash types and locations within the two county region. This data was used to facilitate conversations regarding strategies safety measures that could potentially be implemented to reduce crashes. Most recently RMAP, as well as Boone and Winnebago Counties, have been invited by IDOT to participate in the United States Road Assessment Program (usRAP). Conversations regarding highway safety concerns and safety measures will continue to be discussed at the RMAP Technical Committee level as well as through continued participation with IDOT, Boone County and Winnebago County. This work will extend and continue into FY 2017.
- Continuing to monitor and update air quality data.
- Continuing to monitor the Travel Midwest website <http://www.travelmidwest.com/lmiga/home.jsp> and IDOT's website <http://wrc.gettingaroundillinois.com/pages/wrc.htm> for current road conditions. The first website displays the Gary – Chicago – Milwaukee travel corridor / regional area, which has been expanded into the RMAP area. The second is a state-wide travel information website that has a wide-variety of travel data for the general public, including current road conditions.

## **9 – Long-Range Transportation Plan (LRTP):**

**Proposed budget amount: \$ 135,932**

The "Transportation 2040 Tomorrow: A Long Range Transportation Plan for the Rockford Region" was adopted by the RMAP Policy Committee on July 30<sup>th</sup>, 2015. RMAP will maintain the comprehensive 2040 LRTP to coordinate transportation improvements and delivery of public transportation services over the next planning horizon 25-year period (2010 – 2040); evaluate various plan changes, project proposals, developments and alternative transportation plans for incorporation to the LRTP and its subsequent amendments. Within the comprehensive LRTP document, there are several planning efforts that, by themselves, are specific enough to warrant sufficient sub-elements and staff resources to be allocated for these topics.

- Bicycle and Pedestrian Planning
- Planning and National Environmental Policy Act (NEPA): RMAP will be working with the lead agency for each project to develop a preliminary Purpose and Needs statement and preliminary determination as to the type of NEPA review that may be needed. As mentioned earlier in this document, RMAP is participating in IDOT's / Illinois Center of Transportation project of "Incorporating NEPA into IDOT and MPO Planning Process" (ICT Project R27-132). The main goal of this project is to assist IDOT in defining guidelines on how to integrate NEPA into the IDOT/MPO planning processes for transportation projects. One of the main objectives is to streamline the current process and to allow for early coordination with resource agencies. This will continue into FY 2017.
- Planning and Environmental Linkages (PEL): A "PEL study" is any type of transportation planning study conducted at the corridor or subarea level, to link planning information directly or by reference into NEPA. PEL is also part of a FHWA overall "Every Day Counts" (EDC) initiative to have greater accountability in how public funds are spent. EDC is designed to identify and deploy innovation aimed at shortening project delivery, enhancing the safety of our roadways, and protecting the environment.
- Transportation Alternatives, including Safe Routes to School (SR2S).
- Transportation Safety
- Freight / Urban Goods Movement Planning (including air, rail and intermodal facilities)
- Rail Planning, including passenger rail (Amtrak and Metra) and facilities

- Environmental, Watershed and Farmland Preservation Planning: The principal planning effort is the continual development of the Boone County and Winnebago County Regional Greenway Plan.
- Other Urban Infrastructure (public water, storm sewers & water reclamation) and Facilities Planning Areas
- Airport and intermodal planning
- Coordinated Public Transit - Human Services Transportation Plan (HSTP)
- Economic Impact Analysis
- Transportation Finance
- Air quality

One of the most important changes to the current LRTP is the incorporation of the 2010 Census data, further MAP-21 regulations and related information. As the FAST-Act was signed into law on December 4<sup>th</sup>, 2015, amendments to the LRTP pertaining to subsequent regulations from the FAST Act will be incorporated accordingly into the LRTP.

Also the current LRTP references the Regional Plan for Sustainability Development (RPSD). The RPSD was a HUD – EPA – USDOT partnership that seeks to further study livability issues by providing more transportation choices, promoting equitable and affordable housing, increasing economic competitiveness, supporting existing communities, leveraging federal investment and valuing local communities and neighborhoods. Sixteen core areas have been identified as key components for this RPSD planning process.

- SOCIAL (6) – Housing, Safety, Civic Vitality, Cultural Life, Health and Wellness, Food
- ECONOMIC (5) – Transportation, Education, Economic Development, Technology and Energy
- ENVIRONMENTAL (5) – Built Infrastructure, Water, Land, Biodiversity, and Waste Management

Ongoing tasks will be to determine if several (if not all) of the core areas can be included in the maintenance and future development of the LRTP, a FHWA/FTA planning requirement. Some of the core areas might fall outside the MPO planning goals and primary objectives of the information that should be included in a long-range transportation plan. From a professional planning perspective, the RPSD would be a central focus task of a regional planning council (RPC) that would include and connect many of the issues that urban areas and the overall planning process are confronted with. The FHWA/FTA planning funds that RMAP receives through our IDOT Intergovernmental Agreements are restricted to transportation planning activities / factors and those direct impacts that are set forth under the authorized federal legislation. Transportation planning factors are meant to be for projects that are based upon the “**continuing, comprehensive** transportation planning process carried out **cooperatively** by states and local communities in conformance” (3-C) with federal law.



## PART 8 – SUMMARY of FY 2017 WORK ELEMENT ACTIVITIES

### Planning Projects Commencing &/or Continuing in FY 2017:

1. Every four years, MPOs are required to undergo a federal certification review of the transportation planning process by the Federal Highway Administration (FHWA) and Federal Transit Administration (FTA). RMAP's most recent review occurred on October 28-29<sup>th</sup>, 2015. Work based upon recommendations for improvements to the transportation process, as identified with the final certification report from FHWA & FTA, will begin in FY 2017.
2. Monitoring of and amendments to the **“Transportation 2040 Tomorrow: A Long Range Transportation Plan for the Rockford Region.”** This required essential document must have MPO review and approval every five years. The current RMAP 2040 LRTP was adopted on July 30, 2015.
3. Corridor / Intersection Development – Redevelopment Studies:
  - a. South Main Street / Railway area – to foster economic development and adaptive reuse around the proposed train station (transit – oriented development).
  - b. Spring Creek Road & the Jane Addams Memorial Tollway (I-90 / I-39) interchange location.
  - c. Irene Road & the Jane Addams Memorial Tollway (I-90) interchange location.
  - d. US-20 from the Winnebago County line to Genoa Road in Boone County.
  - e. Arterial - Collector Roadway & Neighborhood inventory analysis – to target older commercial areas and surrounding neighborhoods. The overall objective is to increase their viability, economic competitiveness and community appeal to facilitate walking and bicycling, thus reducing vehicle miles of travel (VMT) and single – occupant vehicles (SOV) trips. IL-2 / North Main Street & Auburn Street (Roundabout) is an example of past and possible future analysis.
4. Incorporate an environmental screening table for all the projects listed in the 2040 RMAP LRTP. The table would include the name of the project, purpose and need, the lead agency primary responsible for the project, other possible participating agencies and agencies that should be consulted with. Also, continuing to work with IDOT as part of the Technical Review Committee for “Incorporating NEPA into IDOT and MPO Planning Process” (ICT Project R27-132).
5. Update of the 2007/2008 Bicycle – Pedestrian Plan for the RMAP planning area. Since this plan was last done, additional information is available on such issues as Complete Streets, Healthy Communities and the RPSD.
6. Healthy communities – outreach and collaboration with the area's health and university sectors to implement the GREEN strategy action plan. This also includes the update to the regional Greenway Map and Plan for Boone County and Winnebago County.
7. Performance Measures
8. REMI – TDM integration

9. Technical Assistance: Continue to provide technical assistance to the RMAP Policy Committee and Technical Committee members, but also to other governmental, civic / community organizations and the general public as the planning process advances.
10. Rockford Regional Freight Study (RRFS) – in March 2015 a complement sub-area analysis study was done for an intermodal industrial area south of RFD. Additional follow-up work is anticipated from this report and to the overall RRFS.
11. RMAP Public Participation Planning Process: Seek and explore current and new contacts in the RMAP Public Participation Plan (PPP) so that the RMAP planning process is visible, open and accessible to the general public for review and comments. Continue to explore the use of social media for outreach and information purposes.

On this adoption date, RMAP should have enough funds budgeted to meet these planning projects. However, if a special planning project that is not included in this FY 2017 UWP is requested for RMAP to initiate, then RMAP might seek and apply for other planning funds available to the urban area, primarily State Research & Planning (SPR) Funds.

#### **PLANNING DOCUMENTS TO BE UPDATED in FY 2017:**

1. FY 2018 Unified Work Program
2. Transportation Improvement Program for FY 2017 – 2020, TIP amendments and FLOP
3. Amendments (as needed) to the **Transportation 2040 for Tomorrow** – Long Range Transportation Plan.
4. Reports on technical assistance to various special studies and planning efforts
5. Performance Measures, depending on the progress of the;
  - Statewide Technical Advisory Groups,
  - Local and regional planning proposals, and
  - Other planning initiatives
  - Issuance of regulations from FHWA & FTA stemming from FAST Act
6. Public Participation Plan for RMAP
7. Coordinated Public Transit-Human Services Transportation Plan
8. Update and adoption of the RMAP Bicycle / Pedestrian Plan, which was last adopted in 2008
9. RMAP / NEPA linkage table
10. Rockford Regional Freight Study; follow-up from sub-area analysis and possible updates and further sub-area(s) evaluation

## PART 9 – SPECIAL CONSIDERATION IN ADMINISTRATION AND PLANNING

### A. INTERGOVERNMENTAL AGREEMENT:

The Federal and State funds referred to in this Work Program will be awarded via Intergovernmental Agreements (IGA/contracts) between the Illinois Department of Transportation and RMAP specified in this Unified Work Program. The terms of that IGA supersede this Work Program and govern the use of all Federal and State funds and the procedures for obtaining reimbursements for expenses incurred under the terms of the Agreement and this Work Program.

### B. AUDITS

An audit of all contracts and awards will be prepared to comply with OMB Circular A-102, Attachment P.

### C. COST ALLOCATION PLAN

The cost allocation methodology for FY 2017 will be the same as used and approved in previous years. RMAP will submit those charges for reimbursement that can be defined as eligible costs under the terms and conditions as determined in the Intergovernmental Agreement (IGA/contract) between RMAP and IDOT. Charts 7 to 12 display the budget for RMAP for the FY 2017 time period.

### D. FUNDING ALLOCATION SUMMARY

RMAP is the only organization assigned tasks that are funded with (1) FHWA PL and (2) FTA 5305(d) funds. The nine work elements are developed around the PL/5305(d) funds and matching funds from the (3) State of Illinois Metropolitan Planning Funds (SPF) and (4) RMAP Local Contribution Funds (LC). These funds constitute 100% of the MPO funding outlined in this document and planning projects that will be carried out under the terms and conditions of the IGA.

The nine work elements define the overall work that will be performed during the 2017 fiscal year, which covers the metropolitan planning activities under FAST Act and MAP-21. The four different funding resources are programmed toward developing and maintaining the full certification of the RMAP MPO for the Rockford urbanized area and all related planning activities. Recent Federal emphasis encourages the integration of land use planning with transportation planning. Accordingly, all nine transportation planning elements have highway (PL) and transit (5305(d)) aspects as well as SPF and LC that are equally distributed.

Therefore, in this work program, all funded work elements are funded at the ratio of:

- FTA 5305(d) funds to (14.60%)
- FHWA PL funds to (52.56%)
- SPF funds to (18.31%)
- LC funds. (14.53%)

Chart 8 display the allocation of these funds by the nine work elements

There are two types of costs identified in the FY 2017 UWP: Labor and Non-Labor. The cost allocation split that has been developed over the past several adopted and approved UWPs continue with the FY 2017 UWP. Labor costs are specific personnel costs attributed directly to the nine work elements and toward achieving the goals described in this UWP.

Non-labor cost include rental and maintenance costs, payroll, insurance, audit, telephone, copier, postage, office supplies, travel, education and training, subscriptions, dues, advertising, micro-computers and other office equipment. Chart 12 is the overall Object Class Budget. These costs are divided into the nine work elements based upon each of the percentage of nine specific sub-work element budget amounts.

## **E. COMPUTATION OF TOTAL LOADED HOURLY WAGE RATES**

Labor charges will be based on “total loaded hourly” rates that include fringe benefits, independently computed for each employee. The rates for each employee are recomputed each time there is a change in any of the components. The rates are verified for each semi-annually / quarterly Reimbursement Report. Generally, the loaded wage computational method is as follows:

1. Annual salary plus longevity, if any, is divided by 2,088 hours per year to arrive at an ‘hourly rate’.
  - 1.1.1. Life insurance is added at the expected annual cost/2,088 (\$78.00/year total).
  - 1.1.2. Unemployment compensation is added at the expected annual cost/2,088 (\$180/year total).
  - 1.1.3. Parking cost benefit is at \$720/year divided by 2,088 hours (\$60.00/month).
  - 1.1.4. Workman’s compensation is added at a percent of the base hourly rate (0.28%).
  - 1.1.5. Health insurance is computed at an annual cost per year (\$6,604 for single, \$13,208 for single plus 1 or \$19,812 for family coverage) divided by 2,088 hours.
  - 1.1.6. Contributions to the Illinois Municipal Retirement Fund (IMRF) are calculated based upon the employee’s normal pay rate/grade and at a fixed percentage (approximately 21%) divided by 2,088 hours.
2. It is not possible to convert all the above factors into simple percentages because some (life insurance, unemployment compensation, health insurance, and parking cost) are fixed amounts that apply equally to all employees regardless of differing base pay rates. Similarly, holiday, vacation and sick leave credits cannot be converted to simple percentages because rates vary depending on the individual’s annual allocation and total accumulation. However, on the average, the total fringe benefit package for employees at RMAP is approximately 28% of base pay.

## **F. SUBMITTAL OF REIMBURSEMENT REQUESTS**

1. RMAP will summarize all activity / reimbursement requests, prepare the required documentation and submit the requests to IDOT for each of the four-quarters in FY 2017 within a timely fashion following each quarter period.
2. Reimbursements from IDOT are sent to RMAP for each invoice submitted.

## G. MINORITY AND ENVIRONMENTAL JUSTICE

A significant goal of RMAP is to assure that the delivery of public transportation services and the priority setting for transportation improvements does not disproportionately distribute the benefits of these publicly-funded activities away from minority persons or groups (racial or ethnic) or persons or groups with low income or economic status. Conversely, these efforts also seek to assure that the adverse or detrimental consequences of transportation services or improvements are not disproportionately burdened upon minorities or low-income persons or groups.

To maintain progress toward this goal, RMAP, for most of the past three decades, has monitored the delivery of public transportation services, the implementation of transportation improvement projects, and conducted transportation planning activities. With regard to public transit this work was performed under specific long-standing guidance issued by the FTA & FHWA. With regard to improvement project prioritization and planning RMAP techniques have involved the assessment of where work was being planned or programmed in comparison to the spatial demographics of the community.

The MPO examines the benefits and burdens of transportation investments using Geographic Information Systems by overlaying current and proposed projects with datasets such as demographics, density, access to transit, and several others. The Mobility Subcommittee also includes representatives that provide the MPO substantial input on the mobility and accessibility needs of low income and transit dependent populations as well as the needs of elderly and disabled persons. Furthermore, a Limited English Proficiency (LEP) plan has been developed and is currently being implemented to assist those persons with language barriers.

The FTA & FHWA have issued guidance for both Title VI and Environmental Justice planning documents. The requirements have been set with the release of FTA Circular 4702.1B (Title VI/ effective October 1, 2012) and FTA Circular 4703.1 (Environmental Justice/ effective August 15, 2012). Requirements are reflected for both RMAP *and* RMTD through the updated Title VI and Environmental Justice documents for each respective organization.

The more recent assessment of roadway improvements and the overall planning process were conducted in FY 2016. The current Environmental Justice and Title VI report relating to the Transportation Planning and Transportation Improvements in the Rockford Metropolitan Area (RMAP Title VI & EJ document) was adopted by the RMAP Policy Committee and submitted to FHWA, FTA and IDOT on September 24, 2015. The assessment considered both minority and environmental justice and concluded that both the planning process and the priority setting for roadway improvement did not disproportionately impact nor neglect minorities and/or low-income groups or persons in the Rockford area, especially with respect to expenditures of Federal funds. This conclusion is supported by examination of demographic data through development of regional thresholds for minority population and low-income individuals and comparing that information to where transportation projects utilizing Federal and / or State funds have been geographically located. Through this analysis, it was determined that approximately 55% of the total amount State and / or Federal funds expended on transportation improvements within the RMAP MPA (2006-2014) were expended in census block groups exceeding the regional threshold established for minority populations. Additionally, it was determined that approximately 64% of the total amount of State and / or Federal funds expended on transportation improvements within the RMAP MPA (2006-2014) were expended in census tracts exceeding the regional threshold established for low-income populations. RMAP will continue to monitor the expenditure of Federal and State funds relating to transportation improvements as they correlate to geographic locations of minority populations and low-income populations within the RMAP Metropolitan Planning Area.

Examples of transportation improvement projects in geographic areas with significant minority populations and/or low-income populations have been the following:

- Springfield/Harrison Connection: The single largest expenditure of transportation funds in decades, completed in November 2002, a project that has been regarded as a boon to the minority and low-income area it traverses.

- Harrison Avenue from Mulford Road to 11<sup>th</sup> Street: The reconstruction will also be a great benefit to minorities and low-income persons. The first and second portions of this project, from Mulford Road to 20<sup>th</sup> Street and the two bridges over the railroad tracks, were completed in 2009. The projected total cost for these two portions is approximately \$20,000,000. The next phase, from 20<sup>th</sup> Street to 11<sup>th</sup> Street, is schedule for 2016.
- Further, a number of federally funded planning projects have also been targeted at minority and low-income areas, the most notable being the West State Street Corridor Study (U.S. Business 20), South Main Street (IL 2), and the RMTD Route and Schedule Analysis (RSA). Construction letting both of the West State Street and South Main Street corridors occurred in 2013. Both of these corridors should be completed in 2015-2016.

Prior to the development and adoption of the 2015 RMAP Title VI and Environmental Justice document and at the request of the FHWA and FTA, RMAP provided status update letters regarding the current state of the Title VI and Environmental Justice documents for both RMAP and the RMTD. These letters described the current state of the Title VI and EJ analysis process, annual self-certification process, and status of each agencies compliance as a result of recent FTA Triennial reviews (RMTD) and joint FHWA/FTA Federal Certification reviews (RMAP). Both RMTD and RMAP were found to be in compliance with regulations pertaining to Title VI and EJ as there were no findings or corrective actions issued for either agency. Below is a listing of the updates that were submitted to both FHWA and FTA.

1. The report entitled, "Title VI & Environmental Justice of the Public Transit Services provided by the Rockford Mass Transit District in the Rockford Urbanized Area", March 2004, as prepared by RATS
2. The letter dated March 29, 2007, regarding "Title VI and Environmental Justice Assessment for the Rockford Mass Transit District" addressed to Dwight B. Sinks, Civil Rights Officer, US DOT / Federal Transit Administration / Region V, from Gary McIntyre (RATS)
3. The letter dated March 27, 2008, regarding "Title VI and Environmental Justice Update for the Rockford Mass Transit District Reporting Requirements", addressed to Dwight B. Sinks, Civil Rights Officer, US DOT / Federal Transit Administration / Region V, from Jon Paul Diipla (RATS)
4. The letter dated June 20, 2011, regarding "Title VI and Environmental Justice for the Rockford Mass Transit District Status Report", addressed to Donald Allen, Civil Rights Officer, US DOT / Federal Transit Administration / Region V, from Jon Paul Diipla (RMAP)
5. The letter dated June 20, 2011, regarding "Title VI and Environmental Justice for the Rockford Metropolitan Agency for Planning Status Report", addressed to John Donovan, Metropolitan Planning Specialist, US DOT / Federal Highway Administration, from Jon Paul Diipla (RMAP)

RMTD adjusted their fixed routes in December 2012. Since that time, RMTD has been monitoring the performance of the routes and will determine if additional modifications will be necessary to better serve transit riders. It should also be noted that prior to the development of the RMAP FY 2017 UWP, the RMTD Title VI and EJ document had been updated (March 2014), adopted by the RMTD Board of Directors and submitted to FTA to meet the requirements set forth in both FTA Circular C 4702.1B (Title VI) and FTA Circular C 4703.1 (Environmental Justice).

## PART 10 – PUBLIC COMMENTS

The 1<sup>st</sup> draft version of the FY 2017 UWP was distributed to the RMAP Technical Committee on March 17, 2016.

Also, a Public Notice was published in the Rock River Times (RRT) on March 16, 2016, announcing the RMAP planning process and solicitation of public involvement/comments on the UWP, TIP, updating the Bicycle / Pedestrian plan and Coordinated Public Transit –Human Services Transportation Plan document. The schedule for these planning efforts was included in this notice. This newspaper is published weekly and is available at hundreds of locations for a full seven days following its initial publication. Also, the RRT has a web-site at: <http://www.rockrivertimes.com>

Comments should be direct to:

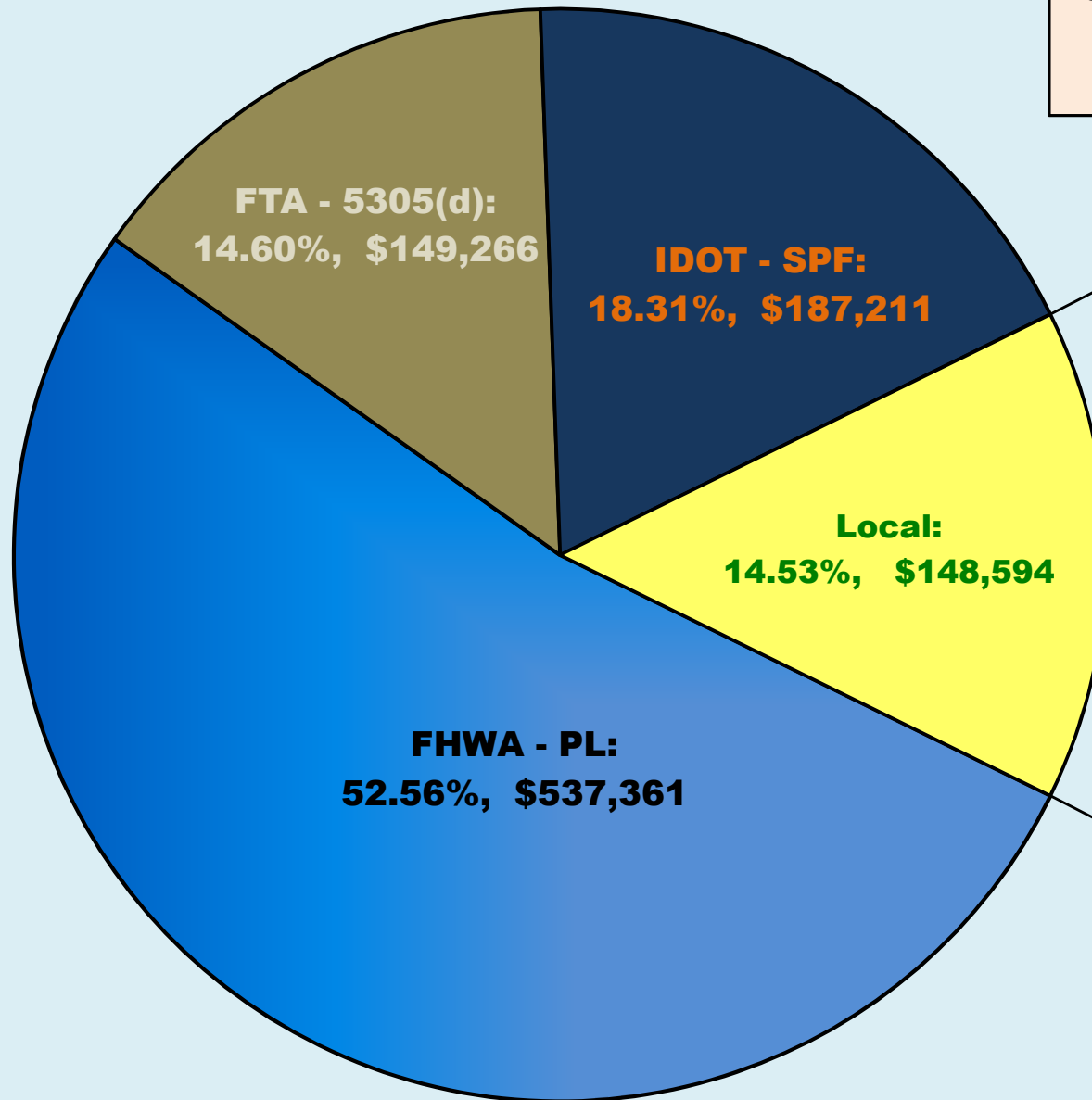
Jon Paul Diipla, AICP, Metro Program Manager  
Rockford Metropolitan Agency for Planning  
313 North Main Street  
Rockford, IL 61101  
779-348-RMAP (7627) – office (new phone number)  
815-967-6913 – fax  
779-348-7626 – direct (new phone number)  
[jonpaul.diipla@rockfordil.gov](mailto:jonpaul.diipla@rockfordil.gov)

Listed below are the changes made to the March 17, 2016, draft UWP:

1. Addition of Figure 3, Figure 4, Chart 13 and Chart 14 depicting invoice amounts submitted to IDOT and outstanding funds to be reimbursed to RMAP from IDOT for FY 2016 UWP activities.
2. Correction of RMAP adopting resolution. Draft version (3/17/2016) listed resolution 2016-5. Resolution now correctly reads “RMAP Resolution 2016-6”.

**FIGURE 2: RMAP MPO FY 2017 Funding Sources**  
Federal, State & Local Funds

**Total Funds: \$1,022,432**



**Rockford: 7.46%,  
\$76,292**

**Winnebago County:  
2.72%, \$27,763**

**Belvidere: 1.21%, \$12,330**

**Loves Park: 1.16%, \$11,866**

**Machesney Park: 1.13%,  
\$11,547**

**Boone County: 0.86%, \$8,796**



**Chart 10: for Intergovernmental Agreement IDOT/RMAP: Federal, State & Local Funds**

<b>PART 6</b>		
<b>Compensation For Services</b>		
	<b>AMOUNT:</b>	<b>SHARE:</b>
FHWA - PL Funds	\$ 537,361	80.00%
State Planning Funds	\$ 134,340	20.00%
Subtotal	\$ 671,701	
FTA – 5305(d) Funds	\$ 149,266	80.00%
State Planning Funds	\$ 37,316	20.00%
Subtotal	\$ 186,583	
<b>TOTAL for IGA</b>	<b>\$ 858,283</b>	
<b>Participation:</b>		
<b>Federal Funds Through IDOT</b>		
FHWA-PL	\$ 537,361	52.56%
FTA-5305(d)	\$ 149,266	14.60%
Subtotal	\$ 686,627	67.16%
<b>State Planning Funds</b>		
FHWA-PL	\$ 134,340	
FTA-5305(d)	\$ 37,316	
Additional State Funds	\$ 15,554	
Subtotal	\$ 187,211	18.31%
<b>Local Governmental Body Funds</b>		
FHWA-PL	\$ 116,291	
FTA-5305(d)	\$ 32,303	
Subtotal	\$ 148,594	14.53%
<b>TOTAL FUNDS:</b>	<b>\$ 1,022,432</b>	

**CHART 11: RMAP FY 2017 UWP**

RMAP Work Element		Work Element Budget	FHWA - PL	FTA - 5305(d)	SPF / match: FHWA - PL	SPF / match: FTA - 5305(d)	SPF - Planning Project	Local Share: FHWA-PL	Local Share: FTA - 5305(d)	HOURS
			\$537,361	\$149,266	\$134,340	\$37,316	\$15,554	\$116,291	\$32,303	
1	Unified Work Program (UWP)	\$50,000	26,279	7,300	6,570	1,825	761	5,687	1,580	715
2	Technical assistance (TA) – Overall Subtotal:	\$163,000	85,668	23,797	21,417	5,949	2,480	18,540	5,150	2,330
2.1	*Greenway Plan & Greater RMAP Environmental / Educational Network	\$13,000								186
2.2	*Perryville Road Extension	\$3,500								50
2.3	*Town Hall Road Corridor - Connection to the Jane Addams Tollway (I-90)	\$3,500								50
2.4	*RMAP Bicycle - Pedestrian Study / Active Transportation Planning	\$66,000								943
2.5	* Traffic Simulation Modeling Assistance to City of Rockford & IDOT	\$13,000								186
2.6	*Organize and updating RMAP internal mapping operations	\$5,000								71
2.7	*Environmental/NEPA/Corridor Analysis - Watershed Planning	\$15,000								214
2.8	*Winnebago County & Boone County Traffic Simulation Assistance for TIP	\$13,000								186
2.9	*RMAP & Other Public Transit Organizations: Issues/Subjects/Topics	\$16,000								229
2.10	*RMAP Regional Freight Analysis	\$15,000								214
3	Administration (AD)	\$280,000	147,160	40,878	36,790	10,219	4,260	31,847	8,846	4,003
4	Public Participation (PP)	\$52,000	27,330	7,592	6,832	1,898	791	5,914	1,643	743
5	Transportation Data and Forecasting (TDF)	\$71,000	37,316	10,365	9,329	2,591	1,080	8,076	2,243	1,015
6	Land Use-Planning, Data Collection and Forecasting (LUPDCF)	\$135,000	70,952	19,709	17,738	4,927	2,054	15,355	4,265	1,930
7	Transportation Improvement Program (TIP)	\$60,500	31,797	8,832	7,949	2,208	920	6,881	1,911	865
8	Congestion and Transportation System Management (CTSM)	\$75,000	39,418	10,949	9,854	2,737	1,141	8,530	2,370	1,072
9	Long-Range Transportation Plan (LRTP)	\$135,932	71,442	19,845	17,860	4,961	2,068	15,461	4,295	1,943
<b>TOTAL</b>		<b>\$1,022,432</b>	<b>\$537,361</b>	<b>\$149,266</b>	<b>\$134,340</b>	<b>\$37,316</b>	<b>\$15,554</b>	<b>\$116,291</b>	<b>\$32,303</b>	<b>14,616</b>

<b>Chart 12: Object Class Budget &amp; Expenses - Federal, State &amp; Local Funds</b>	<b>FY 2017 BUDGET TOTAL FUNDS:</b>	<b>FHWA - PL</b>	<b>FTA - 5305(d)</b>	<b>State Planning Funds</b>	<b>Local Contribution</b>	<b>SUM TOTALS</b>
<b>Contractual Expenses</b>	<b>\$ 1,022,432</b>	\$ 537,361	\$ 149,266	\$ 187,211	\$ 148,594	\$ 1,022,432
Printing, Publications	\$ 5,500	\$ 1,999	\$ 555	\$ 696	\$ 2,250	\$ 5,500
Postage	\$ 1,100	\$ 369	\$ 102	\$ 129	\$ 500	\$ 1,100
Telephone	\$ 5,167	\$ 3,177	\$ 883	\$ 1,107	\$ -	\$ 5,167
Travel	\$ 17,500	\$ 7,072	\$ 1,964	\$ 2,464	\$ 6,000	\$ 17,500
Dues	\$ 10,000	\$ 4,920	\$ 1,367	\$ 1,714	\$ 2,000	\$ 10,000
Subscriptions	\$ 2,500	\$ 615	\$ 171	\$ 214	\$ 1,500	\$ 2,500
Advertising - legal notices	\$ 400	\$ 246	\$ 68	\$ 86	\$ -	\$ 400
Service Contracts	\$ 64,253	\$ 30,747	\$ 8,541	\$ 10,712	\$ 14,253	\$ 64,253
Building and Office Utilities	\$ 5,500	\$ 2,255	\$ 626	\$ 786	\$ 1,833	\$ 5,500
Contracted Janitorial Services	\$ 14,000	\$ 5,739	\$ 1,594	\$ 2,000	\$ 4,667	\$ 14,000
COR IT Expenses	\$ 31,340	\$ 18,863	\$ 5,240	\$ 6,572	\$ 665	\$ 31,340
Risk Management / Liability Insurance	\$ 5,500	\$ 2,255	\$ 626	\$ 786	\$ 1,833	\$ 5,500
Rent	\$ 50,000	\$ 29,567	\$ 8,213	\$ 10,301	\$ 1,919	\$ 50,000
COR - AUDIT	\$ 1,500	\$ 615	\$ 171	\$ 214	\$ 500	\$ 1,500
Education & Training	\$ 8,000	\$ 3,690	\$ 1,025	\$ 1,285	\$ 2,000	\$ 8,000
<b>Supplies &amp; Materials Expenses</b>						
Small Equipment & Tools	\$ 1,500	\$ 338	\$ 94	\$ 118	\$ 950	\$ 1,500
Public Meetings	\$ 3,800	\$ 2,337	\$ 649.10	\$ 814	\$ -	\$ 3,800
Office General Supplies	\$ 8,000	\$ 3,136	\$ 871	\$ 1,093	\$ 2,900	\$ 8,000
Computers Non-Capital	\$ 4,500	\$ -	\$ -	\$ -	\$ 4,500	\$ 4,500
<b>Capital Expenses</b>						
Building Improvements	\$ 18,100	\$ -	\$ -	\$ -	\$ 18,100	\$ 18,100
<b>SUB - TOTAL</b>	<b>\$ 258,160</b>	<b>\$ 117,940</b>	<b>\$ 32,761</b>	<b>\$ 41,089</b>	<b>\$ 66,370</b>	<b>\$ 258,160</b>
	25.25%					\$ -
<b>Salary &amp; Benefits (RMAP - Lead Agency only):</b>	<b>\$ 764,272</b>	<b>\$ 419,421</b>	<b>\$ 116,505</b>	<b>\$ 146,122</b>	<b>\$ 82,224</b>	<b>\$ 764,272</b>
	74.75%					
<b>TOTAL EXPENSES:</b>	<b>\$ 1,022,432</b>	<b>\$ 537,361</b>	<b>\$ 149,266</b>	<b>\$ 187,211</b>	<b>\$ 148,594</b>	<b>\$ 1,022,432</b>

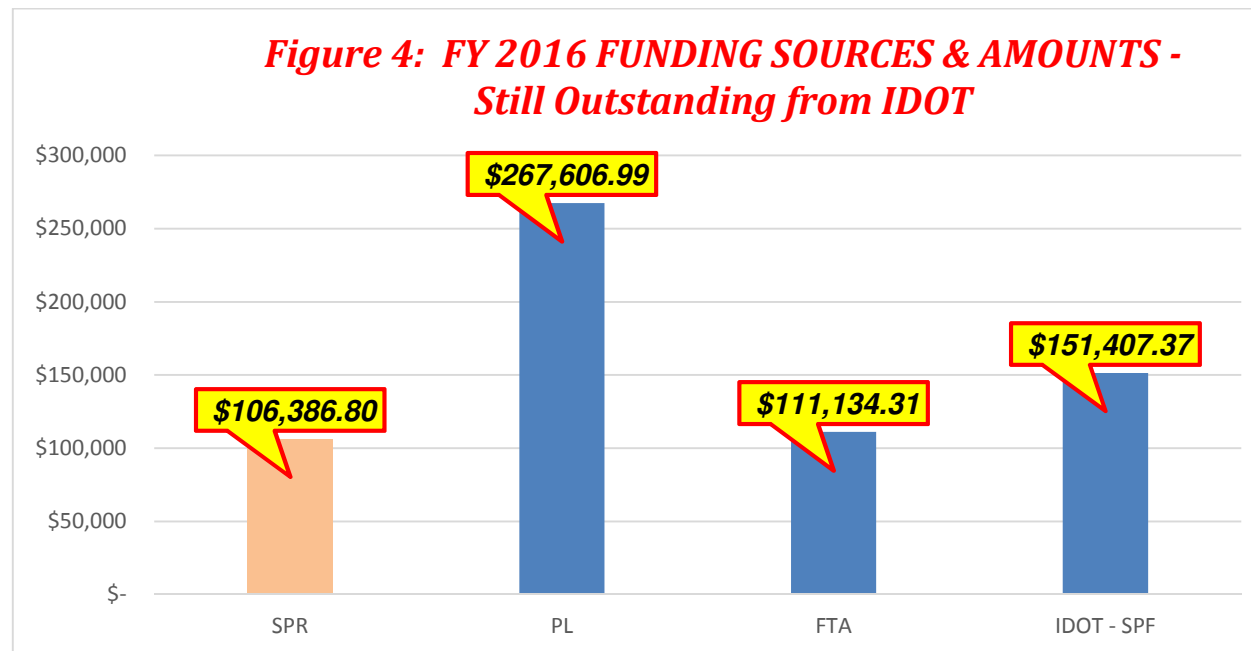
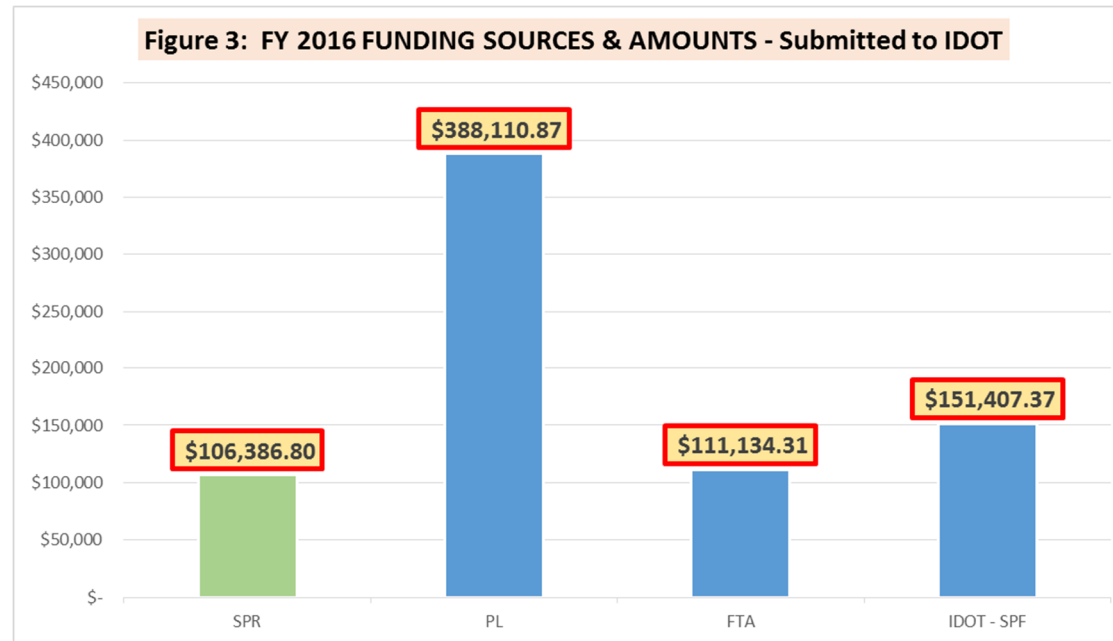


Chart 13: RMAP FY 2016 Funding Sources & Amounts - Submitted to IDOT					
Invoice #	SPR	FHWA-PL	FTA 5305(d)	IDOT - SPF	Planning Project / Request for Reimbursement
1	\$ 46,094.00				REMI / VISUM #4
2				\$ 11,523.50	
3		\$ 120,503.88			UWP FY 2016 1Q
4			\$ 34,511.24		
5				\$ 38,752.25	
6		\$ 139,096.18			UWP FY 2016 2Q
7			\$ 39,826.97		
8				\$ 44,731.26	
9	\$ 60,292.80				REMI / VISUM #5
10				\$ 15,073.20	
11		\$ 128,510.81			UWP FY 2016 3Q
12			\$ 36,796.10		
13				\$ 41,327.16	
<b>TOTAL (1-13)</b>	<b>\$ 106,386.80</b>	<b>\$ 388,110.87</b>	<b>\$ 111,134.31</b>	<b>\$ 151,407.37</b>	<b>\$ 757,039.35</b>

Chart 14: RMAP FY 2016 Funding Sources & Amounts - Still Outstanding from IDOT					
Invoice #	SPR	FHWA-PL	FTA 5305(d)	IDOT - SPF	Planning Project / Request for Reimbursement
1	\$ 46,094.00				REMI / VISUM #4
2				\$ 11,523.50	
3		received			UWP FY 2016 1Q
4			\$ 34,511.24		
5				\$ 38,752.25	
6		\$ 139,096.18			UWP FY 2016 2Q
7			\$ 39,826.97		
8				\$ 44,731.26	
9	\$ 60,292.80				REMI / VISUM #5
10				\$ 15,073.20	
11		\$ 128,510.81			UWP FY 2016 3Q
12			\$ 36,796.10		
13				\$ 41,327.16	
<b>TOTAL (1-13)</b>	<b>\$ 106,386.80</b>	<b>\$ 267,606.99</b>	<b>\$ 111,134.31</b>	<b>\$ 151,407.37</b>	<b>\$ 636,535.47</b>

\*Invoice #3 – FHWA-PL funds reimbursement (\$120,503.88) has been received by RMAP

## **POLICY COMMITTEE**

### **RMAP RESOLUTION 2016-6**

**RE:**           **Adoption of the FY-2017 (July 1, 2016 to June 30, 2017) RMAP Unified Work Program**

**WHEREAS**   the Rockford Metropolitan Agency for Planning (RMAP) is the designated Metropolitan Planning Organization (MPO) for the Rockford Metropolitan Area, and the Policy Committee has the specific responsibility to direct and administer the continuing urban transportation planning process; and

**WHEREAS**   the Federal Highway Administration (FHWA) and the Federal Transit Administration (FTA) require a Unified Work Program for the purpose of programming the Federal transportation planning funds and the connecting State & Local funds for the planning activities that are required and necessary to ensure certification of the Rockford, Illinois Transportation Management Area (TMA), and:

**WHEREAS**   the FY 2017 Unified Work Program (May 26, 2016 version) was developed, announced and distributed to the public in accordance with federal guidelines and with the RMAP Public Participation Process; and

**WHEREAS**   comments have been received and technical corrections have changed the March 17<sup>th</sup> version that was made available for public comment, and

**WHEREAS**   the RMAP Technical Committee has reviewed the FY-2017 Unified Work Program (May 26, 2016 version) and recommends approval;

### **NOW, THEREFORE, BE IT RESOLVED**

That the RMAP Policy Committee:

1. Adopts the FY 2017 Unified Work Program (May 26, 2016 version);
2. Certifies that the Rockford MPO transportation planning process is in compliance with all Federal requirements and is being carried out in accordance with all applicable provisions as specified in the Intergovernmental Agreement with the State of Illinois, Department of Transportation;
3. Directs the RMAP Executive Director to submit the FY 2017 Unified Work Program (May 26, 2016 version) and this Resolution to the State of Illinois, the FHWA and the FTA;
4. Directs RMAP Executive Director to pursue and enter into an Intergovernmental Agreement with the State of Illinois for the purpose of funding and conducting the activities set forth by the Unified Work Program; and
5. Directs RMAP Executive Director to pursue and enter into contracts with professional consultants, as needed, for the purpose of carrying out various sub-elements of work as specified in the Unified Work Program.

**RMAP RESOLUTION 2016-6**  
**Page 2**

Dated this 26<sup>th</sup> day of May, 2016.

---

Mike Chamberlain,  
Chairman – RMAP Policy Committee,  
Mayor, City of Belvidere

---

Jerry Bolin,  
Vice-Chairman – RMAP Policy Committee  
Village President / Mayor, Village of Machesney Park

---

Lawrence J. Morrissey,  
Mayor, City of Rockford

---

Paul A. Loete,  
Deputy Director,  
Illinois Department of Transportation, Region 2

---

Darryl F. Lindberg,  
Mayor, City of Loves Park

---

Gary L. Marzorati,  
Board Chairman, Rockford Mass Transit District

---

Scott Christiansen  
Winnebago County Board Chairman  
Winnebago County

---

Bob Walberg,  
Boone County Board Chairman,  
Boone County

## Metropolitan Transportation Planning Process Certification

In accordance with 23 CFR 450.334 (b), the planning process in the Rockford Urbanized Area was fully certified by USDOT – FHWA – FTA on **June 14, 2012.**

In accordance with 23 CFR 450.334, the Illinois Department of Transportation and the Rockford Metropolitan Agency for Planning Metropolitan Planning Organization for the Rockford urbanized area hereby certify the metropolitan transportation planning process is being carried out in accordance with all applicable requirements including:

1. 23 U.S.C. 134, 49 U.S.C. 5303, and 23 CFR 450 subpart C;
2. (Only applicable to nonattainment and maintenance areas) Sections 174 and 176(c) and (d) of the Clean Air Act, as amended (42 U.S.C. 7504, 7506 and (d) ) and 40 CFR part 93;
3. Title VI of the Civil Rights Act of 1964, as amended (42 U.S.C. 2000d-1) and 49 CFR part 21; Executive Order 13166 (Limited English Proficiency) and Executive Order 12898 (Environmental Justice);
4. 49 U.S.C. 5332, Section 324 of title 23 U.S.C. and the Older Americans Act (as amended 42 U.S.C. 6101) prohibiting discrimination on the basis of race, color, creed, national origin, sex, or age in employment or business opportunity;
5. Section 1101 (b) of the SAFETEA-LU (Pub. L. 109-59) and 49 CFR part 26 regarding the involvement of disadvantaged business enterprises in USDOT funded projects;
6. 23 CFR part 230, regarding the implementation of an equal employment opportunity program on Federal and Federal-aid highway construction contracts;
7. The provision of the Americans with Disabilities Act of 1990 (42 U.S.C. 12101 *et seq.*) and 49 CFR parts 27, 37 and 38, and Section 504 of the Rehabilitation Act of 1973 (29 U.S.C. 794) regarding discrimination against individuals with disabilities.

\_\_\_\_\_  
Signature,  
Mayor of the City of Belvidere,  
Chairman – RMAP Policy Committee or  
Other Authorized Representative of the  
Rockford Metropolitan Agency for Planning  
May 26, 2016

\_\_\_\_\_  
Signature,  
Bureau Chief, Urban Program Planning  
Illinois Department of Transportation or  
other Authorized Representative of the  
Illinois Department of Transportation  
Dated: \_\_\_\_\_